



# PM ESTATES

Property Sales & Lettings



## Riverside Wharf

Bishops Stortford, Hertfordshire, CM23 3GN

£1,250PCM

[www.pm-estates.co.uk](http://www.pm-estates.co.uk)

# Riverside Wharf

Bishops Stortford, Hertfordshire, CM23 3GN

## Overview

- Second Floor Apartment
- Modern Interior Design
- One Double Bedroom
- Open Plan Living Area
- Fully Fitted High Gloss Kitchen
- Integrated Appliances
- Offered Furnished
- Town Centre Location
- Walking Distance to Rail Station
- Energy Rating B
- Council Tax Band B



## Description

If you are looking for a modern contemporary living this apartment is the ideal choice. This one double bedroom apartment, situated within the sought-after Riverside Wharf Development, which is a convenient 5-minute walk (0.4 miles) away from the mainline rail station offering direct services into London Liverpool Street, Stansted Airport and Cambridge City Centre.

Gas and Water Included in The Rental Price.

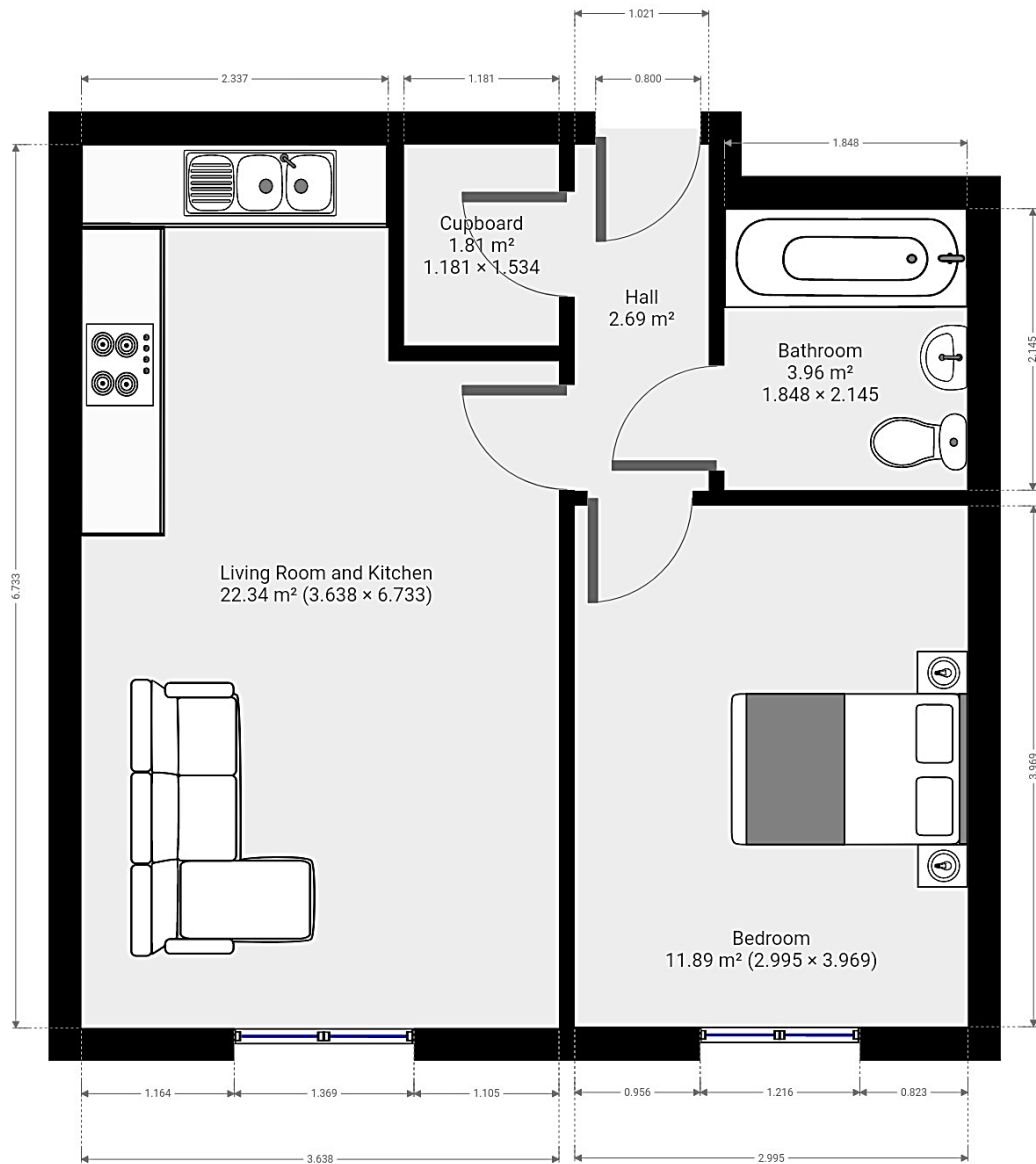
This beautifully finished property is complete with a black high gloss and fully fitted kitchen finish, which houses integrated appliances including a dishwasher. The open plan living area is complete with a feature tilt and turn picture window overlooking the developments private communal areas.

Riverside Wharf remains a popular residential development due to its town centre positioning as well as its quality of finish. The development is just a stones' throw away from various local amenities such as the locally renowned and highly fashionable EAT17 restaurant and food market filled with fresh produce and a vibrant atmosphere as well as the Port Jackson Wetherspoons just a short 2-minute walk away.



Score	Energy rating	Current	Potential
92+	A		
81-91	B	81   B	82   B
69-80	C		
55-68	D		
39-54	E		
21-38	F		
1-20	G		

# Floor Plan



7 Riverside Walk, South Street, Bishop's Stortford, Herts CM23 3AG

Tel: 01279 654646

Email: [info@pm-estates.co.uk](mailto:info@pm-estates.co.uk)

[www.pm-estates.co.uk](http://www.pm-estates.co.uk)

PM Estates wish to advise prospective purchasers that we have not checked the services or appliances. The sales particulars have been prepared as a guide only; any floor-plan or map is for illustrative purposes only. PM Estates, for themselves and for the vendors or lessors of this property whose agents they are give notice that: the particulars have been produced in good faith; do not constitute any part of a contract; no person in the employment of PM Estates has any authority to make or give any representation of warranty in relation to this property.

P820

[www.pm-estates.co.uk](http://www.pm-estates.co.uk)