



Sydenham Hill, SE26
£2,250,000

Dexters



Sydenham Hill, SE26

A four bedroom bespoke and highly modern detached house situated within the Beltwood development on Sydenham Hill.

The New Gate House reflects the essence of the Od Gate House while offering a wonderful juxtaposition of traditional and contemporary architecture. Located in a private corner of the Beltwood House grounds, The new Gate House is an accessible four-bedroomed family home extending over three storeys.

The building has been conceived as the contemporary sister to the original Arts and Crafts Old Gate House located at the entrance of the driveway to Beltwood House. The width, height and roof pitch are intended to mirror that of the original gatehouse, introducing a dualism in age and architectural style to the site.

The distinctively modern and original home opens on to a large reception hall with a Scandinavian Aritco Homelift from the basement to the ground and first floors. The kitchen/diner is finished to an exceptionally high standard and furnished with the latest appliances; this flows into an open plan living space with a feature fire-place and a stunning glazed rooflight. Four double bedrooms, contemporary bathrooms and a range of smart-home features complete the luxurious lifestyle this home offers.

Features

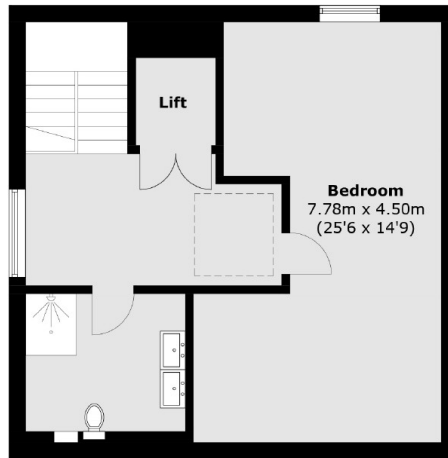
- Detached Property
- Private Gated Development
- Exceptionally High Standard
- Four Double Bedrooms
- Two Bathrooms
- Private Parking







Sydenham Hill, London, SE26



First Floor



Lower Ground Floor

Ground Floor

Total area (approx.): 221.1 sq. m (2,379.9 sq. ft)