

oakheart

£1,300 Per Month

Per Month

St. Johns Street, Bury St. Edmunds

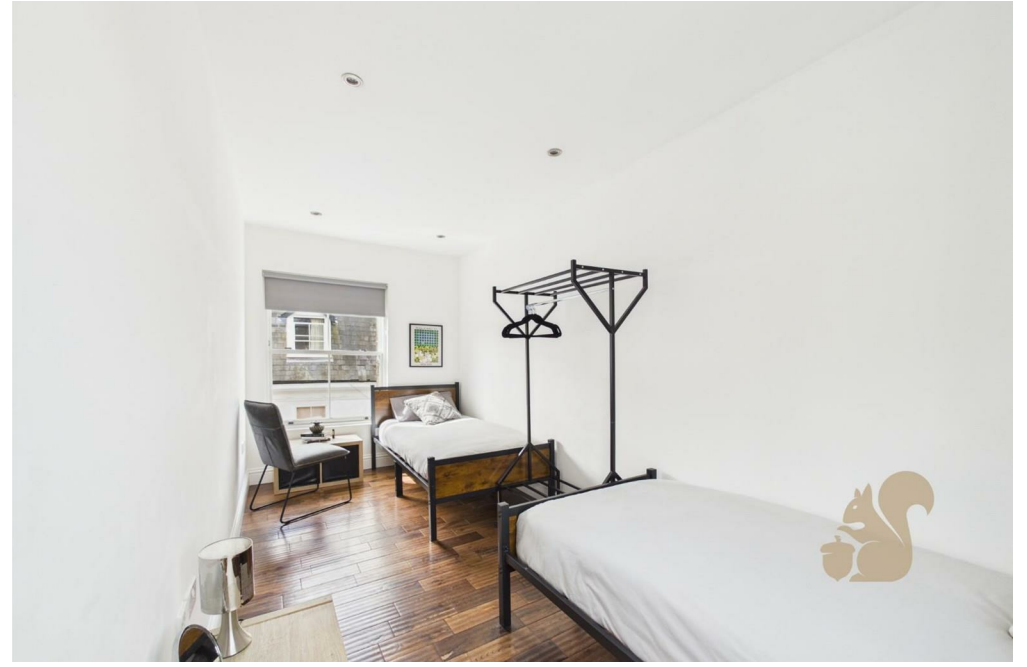
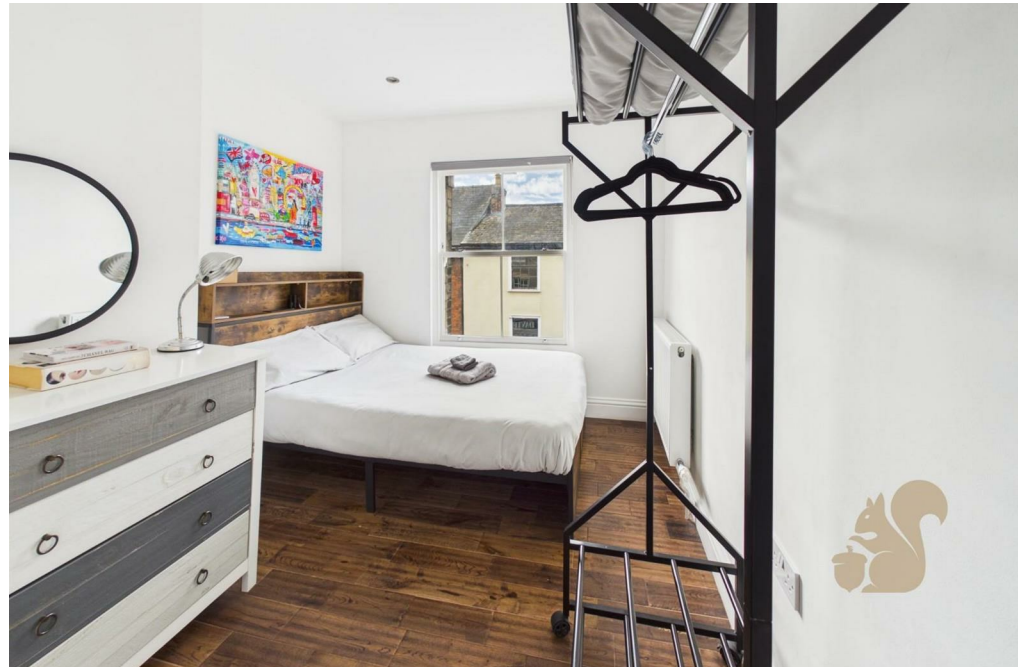


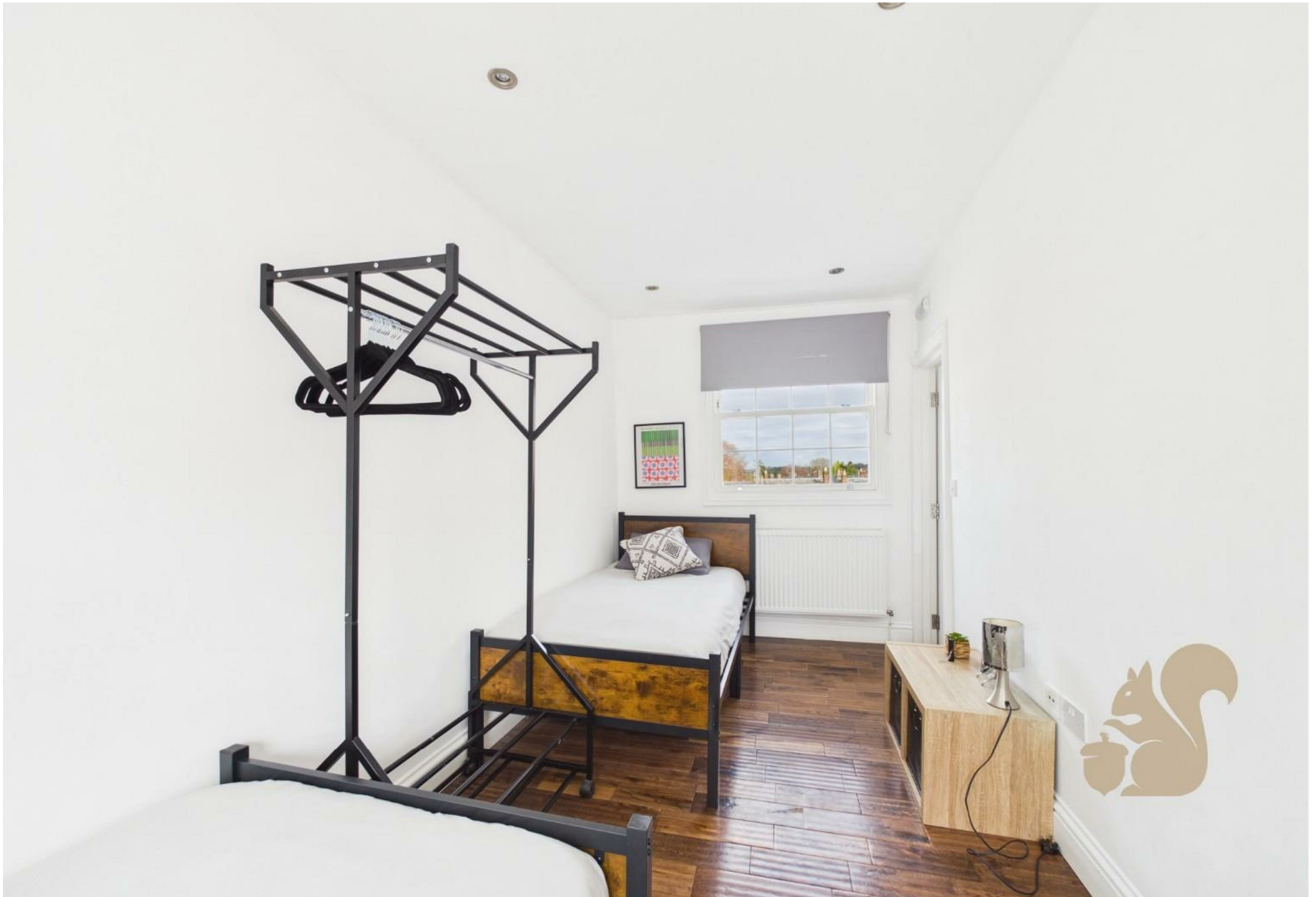
Situated in the heart of Bury St. Edmunds on the ever-popular St. Johns Street, this beautifully presented two-bedroom modern apartment offers stylish town centre living with everything on your doorstep. The property features a bright and contemporary living space, a modern fitted kitchen, two well-proportioned bedrooms and a sleek bathroom finished to a high standard. Positioned within walking distance of local shops,

restaurants, bars and transport links, the apartment is perfectly suited to professionals or couples looking to enjoy the convenience and lifestyle of central Bury St. Edmunds. Offering modern living in a prime high street location, this apartment combines character, convenience and comfort all in one.











oakheart

GLA^m
54.24 m²
583.88 ft²

Total
54.24 m²
583.88 ft²

(1) Finished, above grade
Ext. wall thickness assumed: 15.24 cm/6 in

Calculations reference the ANSI-Z765 standard. Measurements are approximate and not to scale. This floor plan is intended for illustration only.

GIRAFFE360

Local Authority:
West Suffolk

Tenure:

Council Tax Band:
B

Energy Efficiency Rating

	Current	Potential
<i>Very energy efficient - lower running costs</i>		
(92 plus) A		
(81-91) B		
(69-80) C	70	74
(55-68) D		
(39-54) E		
(21-38) F		
(1-20) G		
<i>Not energy efficient - higher running costs</i>		
England & Wales	EU Directive 2002/91/EC	

Agents Note: Whilst every care has been taken to prepare these particulars, they are for guidance purposes only. All measurements are approximate and are for general guidance purposes only and whilst every care has been taken to ensure their accuracy, they should not be relied upon.

Oakheart Bury St Edmunds Lettings
01284 331077
burylettings@oakheart.co.uk
8 St Johns Street, Bury St Edmunds, Suffolk, IP33 1SQ

oakheart