

39 Garden Avenue, Mitcham

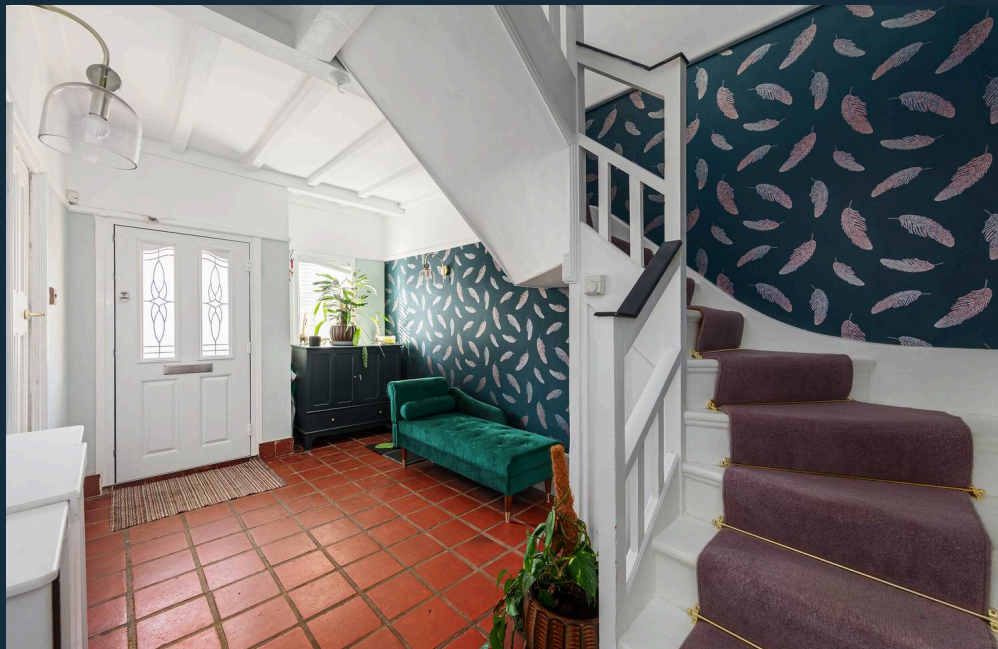
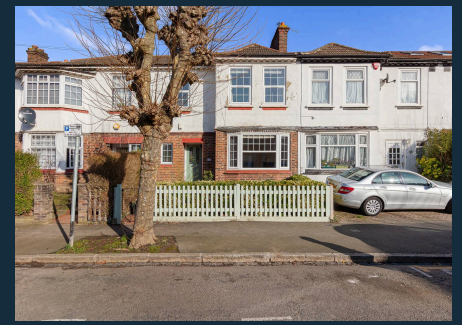
OIEO £580,000 Freehold



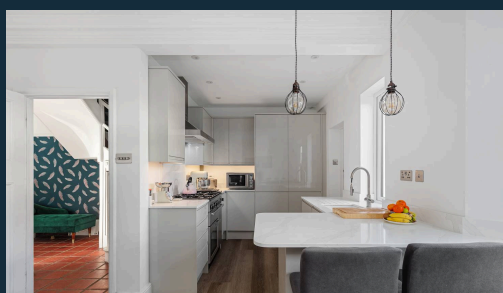
haboodle

This beautifully appointed home in the ever-popular Mitcham Furzedown borders will make the perfect choice for professionals, first-time buyers and growing families, **CHAIN FREE**. Within easy reach of excellent transport/commuting links and outstanding local schools, this beautifully presented Freehold property offers a fantastic amount of functional space in a convenient location.

Situated in a quiet residential road, this terraced property is accessed through a charming, well-kept front garden. On entering the property, you will be impressed by the spacious hallway, which gives access to the ground-floor accommodation. The large, light-filled reception room with period features and an ornate fireplace has a homely feel and is flooded with natural light from the bay windows. The recently fitted modern kitchen is fully equipped with a range of modern built-in appliances, granite tops, and a breakfast bar with seating that flows seamlessly into the family/dining area. This sociable living space provides garden views with double doors to the private rear garden, which is mainly laid to lawn



- CHAIN FREE
- Spacious Living Accommodation
- Stunning Recently Fitted Kitchen/Diner/Family Room
- Downstairs Cloakroom
- Generous Bedrooms
- Potential to Extend (STPP)
- Excellent Transport/Commuting
- Outstanding Nearby Local Schools
- Gas Central Heating & Double Glazed
- Desirable Road



Garden Avenue, CR4

Approximate Gross Internal Area = 104.7 sq m /1127sq ft

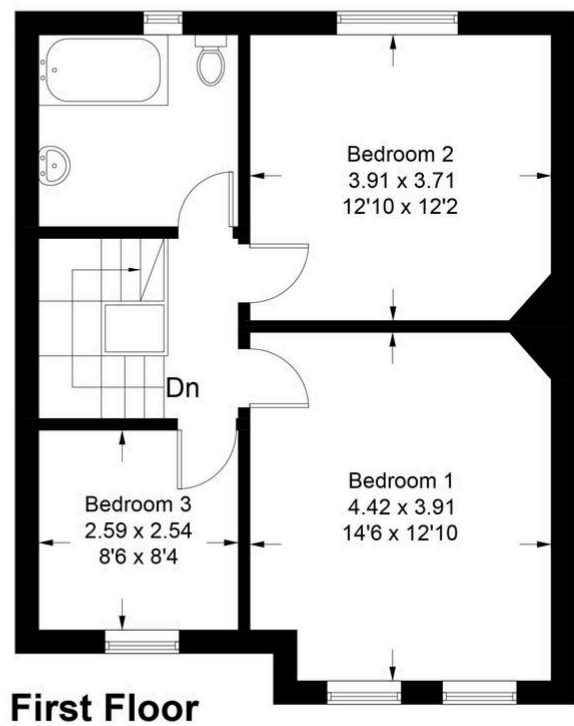
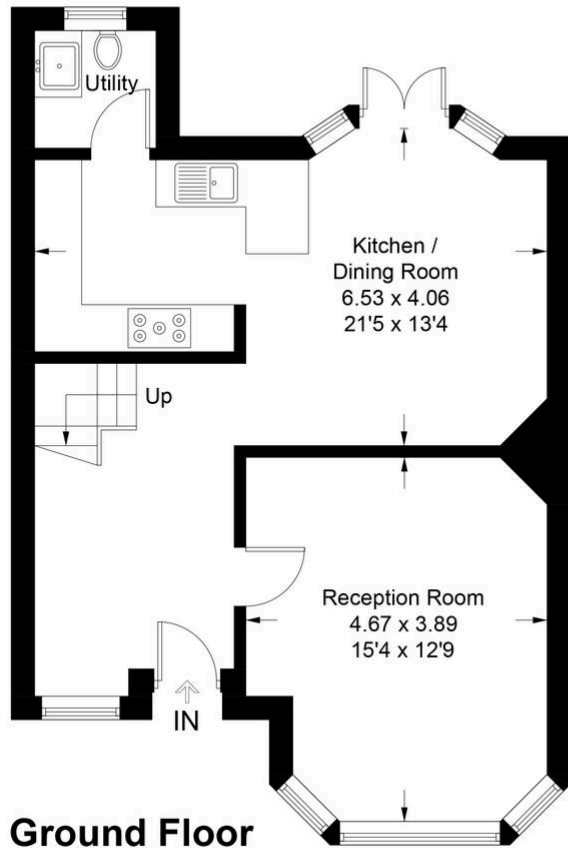


Illustration for identification purposes only, measurements are approximate, not to scale. Fourlabs.co © (ID1167241)



haboodle