



Ashtons

Centurion Square, Skeldergate, York, YO1 6DE

# Centurion Square Skeldergate, York YO1 6DE

Offers Over £270,000



Situated just off Skeldergate, within easy reach of York's historic city centre and mainline train station, this exceptionally spacious first floor apartment offers modern living in a prime location. A successful rental property for many years, it is now available with no onward chain and vacant possession, making it an ideal opportunity for both homeowners and investors.

The well-presented accommodation briefly comprises an inviting entrance hallway leading to a generous open-plan living, dining, and kitchen area. This bright and airy space features French doors opening onto a Juliet balcony, perfect for enjoying fresh air and city views. The contemporary kitchen is fully fitted with a range of wall and base units and includes built-in appliances.

There are two double bedrooms, including a primary bedroom with en-suite shower room, while the second bedroom is served by a stylish family bathroom with a modern three-piece suite.

The property also benefits from secure gated parking, a communal bike store, and beautifully maintained landscaped gardens. This is a superb property in a sought-after location - early viewing is highly recommended.

Leasehold  
Length of lease- 104 years remaining  
Ground rent- £250 per annum  
Ground rent review period- every 25 years- next review 2030 (Increase of £500)  
Service charge- £1,700 per annum

Council Tax Band - D



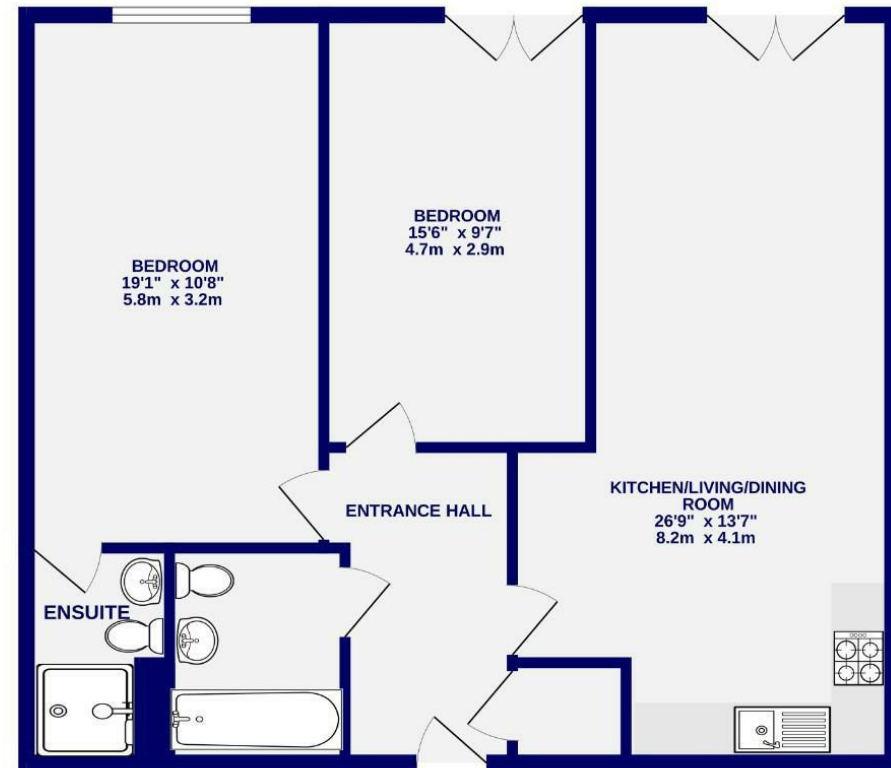


# Centurion Square Skeldergate, York YO1 6DE

Leasehold  
Council Tax Band - D

- First Floor Apartment
- Two Double Bedrooms
- Bathroom & Ensuite
- Open Plan Living
- Allocated Parking
- City Centre Living
- No Onward Chain
- EPC C

SECOND FLOOR  
826 sq.ft. (76.8 sq.m.) approx.



TOTAL FLOOR AREA : 826 sq.ft. (76.8 sq.m.) approx.  
Whilst every attempt has been made to ensure the accuracy of the floorplan, measurements of rooms and any other items are approximate. If included in the plan the garage/store will form part of the overall floor area and no responsibility is taken for any error, omission or mis-statement. This plan is for illustrative purposes only and should be used as such by any prospective purchaser. The services, systems and appliances shown have not been tested and no guarantee as to their operability.  
Made with Metropix ©2025

These particulars have been prepared as accurately and as reliably as possible, but should not be relied upon as 'statement of fact'. If there is any point which is of particular importance to you, please contact the office and we would be pleased to check the information. We have not tested any services, appliances, equipment or facilities and nothing in these particulars should be deemed to be a statement that they are in good working order, or that the property is in good structural condition or otherwise. Any areas, measurements, floor plans or distances referred to are given as a guide only and are not precise. Purchasers must satisfy themselves by inspection or by otherwise regarding the items mentioned above and as to the correctness of each of the statements contained in these particulars. No person in the employment of Ashtons has any authority to make or give any representation or warranty whatsoever in relation to this property or these particulars nor enter into any contract relating to the property on behalf of the vendor. Please note that some images may have been edited with the use of AI. We are legally required to carry out AML checks for all purchasers, sellers and giftors, which become mandatory once an offer has been accepted. There is a non-refundable fee of £30 + VAT per purchaser and per giftor for these checks.