



## Gray's Inn Road, WC1X

£4,000 Per calendar month

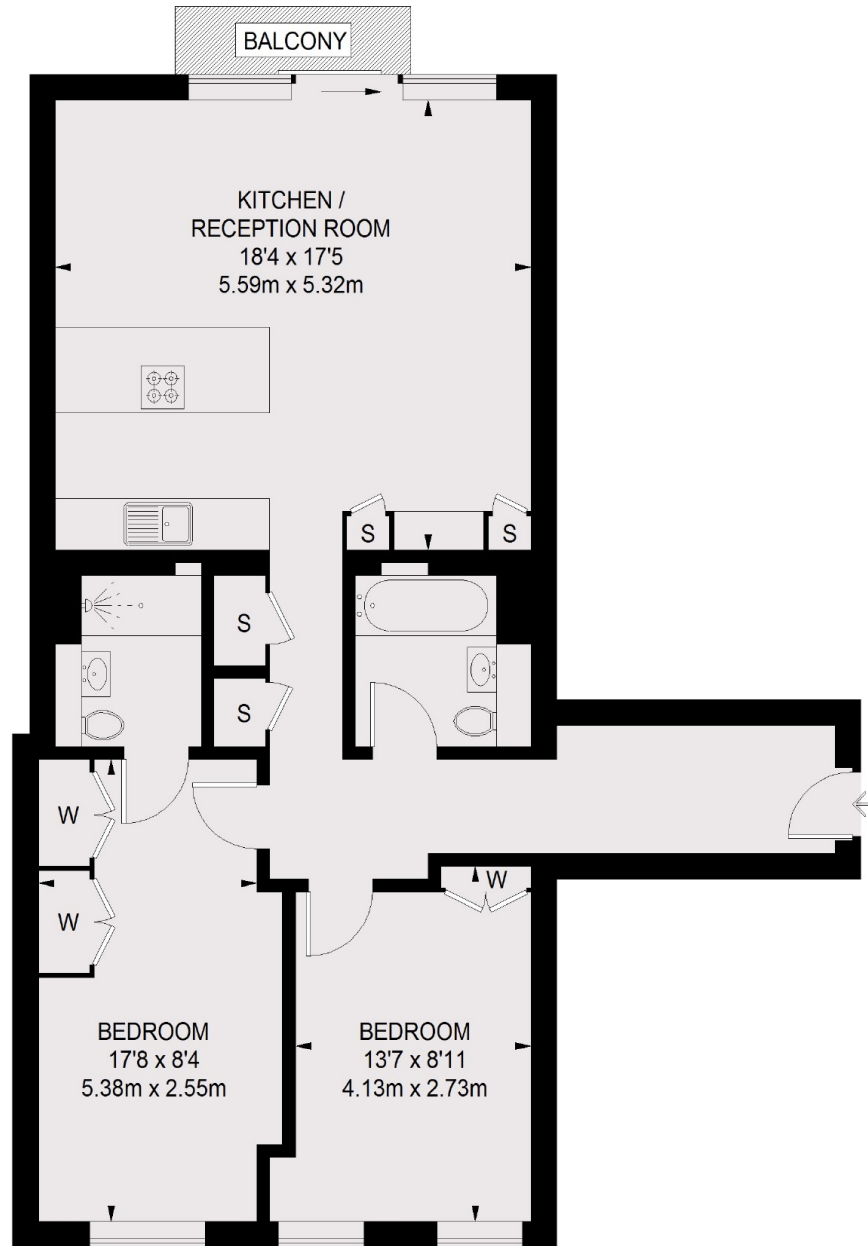
A stylish and immaculately presented apartment in a highly sought after development. The apartment has a spacious open plan kitchen/reception, private balcony, two double bedrooms, two bathrooms and day time porter to the building.

The Lincolns is located on Grays-Inn and is within close proximity to both Chancery Lane and Kings King's Cross St Pancras. Kings Cross Offers access to the Central, Northern, Piccadilly, Victoria, Metropolitan, Circle, Hammersmith and City lines as well as National Rail and Eurostar from St. Pancras International.

### Features

- New Development
- Two Double Bedrooms
- Two Bathrooms
- Air Conditioning
- Private Balcony
- Day Time Porter

Gray's Inn Road,  
London, WC1X



THIRD FLOOR

TOTAL APPROX. FLOOR AREA  
856 SQ. FT. (79.54 SQ. M.)  
BALCONY = 24 SQ. FT. (2.20 SQ. M.)