



10 Cringleway, Great Ponton
Grantham

£175,000

DavidGrace





10 Cringleway

Great Ponton, Grantham

Three-bedroom end-terrace in Great Ponton offering village living with easy A1 access. Ideal first home or family property with spacious rooms, kitchen/diner, living room, and a large garden.

Council Tax band: A

Tenure: Freehold

EPC Energy Efficiency Rating: D

EPC Environmental Impact Rating: E

- Three Bedroom End of Terrace House
- Attractive Village Location - Close to Transport Links and the A1
- Ideal First-Time Purchase
- Good Sized Kitchen/Diner
- Rear Living Room with Garden Access
- Three Double Bedrooms
- Lots of Storage - Bedroom 1 Built In Wardrobes
- Separate Bathroom and WC
- Large Rear Garden
- EPC - D

DavidGrace



Hallway

Kitchen

15' 9" x 9' 6" (4.80m x 2.90m)

Living Room

18' 8" x 12' 10" (5.70m x 3.90m)

Landing

Bedroom 1

16' 5" x 9' 10" (5.00m x 3.00m)

Bedroom 2

13' 5" x 8' 10" (4.10m x 2.70m)

Bedroom 3

9' 10" x 7' 7" (3.00m x 2.30m)

WC

Bathroom





GARDEN

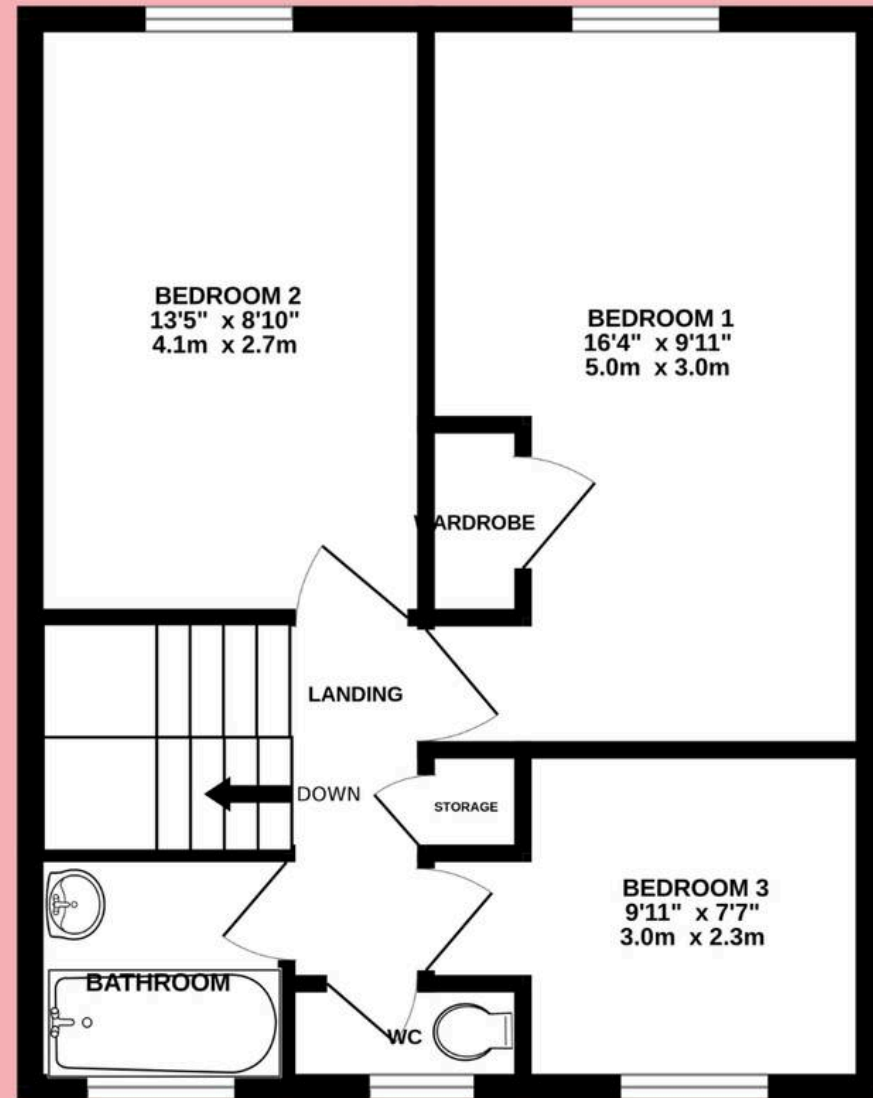
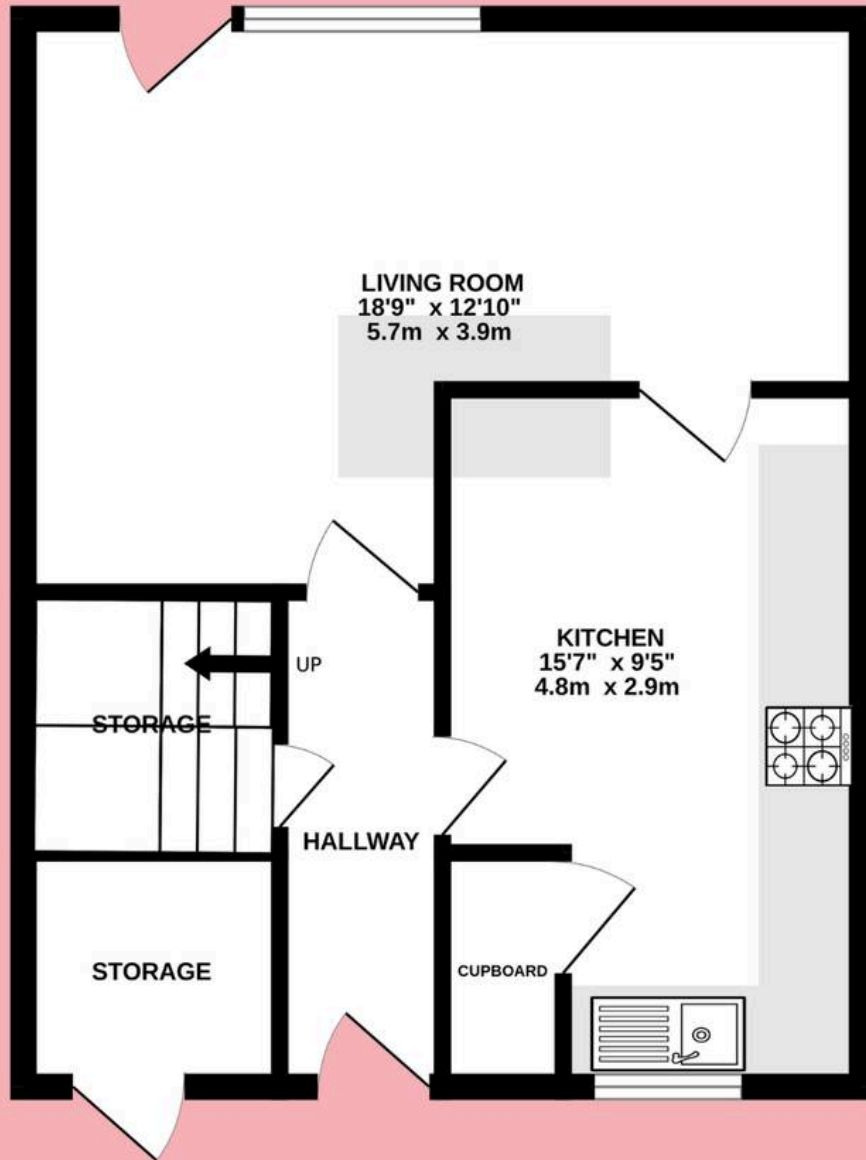
OFF STREET





Cringleway, Great Ponton

Approx Internal area: 896.63sq ft/ 83.3m²





David Grace Estate Agents

71 High Street, Grantham - NG31 6NR

01476 833833 • sell@davidgrace.co.uk • www.davidgrace.co.uk

DavidGrace