

for sale

£615,000



Brington Road Long Buckby Northampton NN6 7RW

Orchard Green is an exclusive and idyllic development consisting of 4 detached homes in the rural village of Long Buckby. These bespoke homes are predicted to have an EPC rating of B, making them particularly appealing for eco-conscious buyers.



Brington Road Long Buckby Northampton NN6 7RW

Location

Long Buckby is located around 4.5 miles north-east of the town of Daventry and roughly midway between Northampton and Rugby. The west of the parish has the A5 road, Grand Union Canal and M1 motorway all passing through. Only a short walk away, Long Buckby train station enjoys excellent rail links on the West Coast main line to both Birmingham New Street and London Euston in approximately one hour.

Entrance Hall

Cloakroom

Study Area

10' 7" x 9' into bay (3.23m x 2.74m into bay)

Living Room

14' 2" x 13' 5" (4.32m x 4.09m)

Kitchen/Dining Room

16' 10" x 13' 9" (5.13m x 4.19m)

Utility Room

Bedroom One

13' 9" x 10' 5" (4.19m x 3.17m)

En-Suite Shower Room

First Floor Landing

Bedroom Two

21' 3" into dormas x 13' 5" (6.48m into dormas x 4.09m)
Restricted head height.



Bedroom Three

14' 8" x 10' 3" (4.47m x 3.12m)
Restricted head height.

En-Suite Shower Room

Bedroom Four

15' plus recess x 9' 9" (4.57m plus recess x 2.97m)
Restricted head height.

Family Bathroom

Outside

Rear Garden

Double Garage

Four Parking Spaces

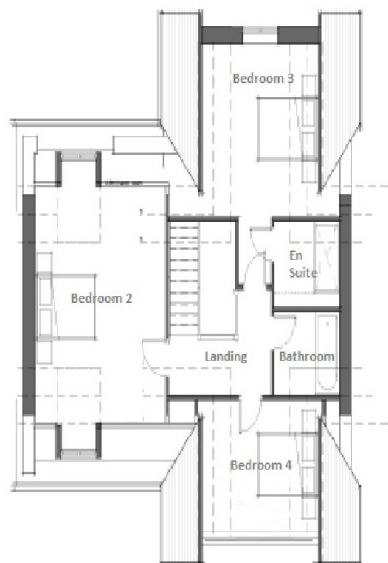
Agents Note

The images have been digitally edited and may not be representative of specific plots.





GROUND FLOOR



FIRST FLOOR

To view this property please contact Connells on

T 01604 716 655
E kingsthorpe@connells.co.uk

87 Harborough Road KINGSTHORPE
NORTHAMPTON NN2 7SL

Property Ref: KTP408016 - 0001

Tenure:Freehold EPC Rating: Exempt



[view this property online connells.co.uk/Property/KTP408016](https://www.connells.co.uk/Property/KTP408016)

1. MONEY LAUNDERING REGULATIONS Intending purchasers will be asked to produce identification documentation at a later stage and we would ask for your co-operation in order that there will be no delay in agreeing the sale. 2. These particulars do not constitute part or all of an offer or contract. 3. The measurements indicated are supplied for guidance only and as such must be considered incorrect. Potential buyers are advised to recheck measurements before committing to any expense. 4. We have not tested any apparatus, equipment, fixtures, fittings or services and it is in the buyers interest to check the working condition of any appliances.

Connells Residential is registered in England and Wales under company number 1489613, Registered Office is Cumbria House, 16-20 Hockliffe Street, Leighton Buzzard, Bedfordshire, LU7 1GN. VAT Registration Number is 500 2481 05.

see all our properties at www.connells.co.uk | www.rightmove.co.uk | www.zoopla.co.uk