



HOLLAND ROAD, W14

£700,000

Two Double Bedrooms
Large Private Garden
Spacious Apartment
Prime Location
Share of Freehold
Open-plan

@marshandparsons
marshandparsons.co.uk

MARSH &
PARSONS

ABOUT THE PROPERTY

This spacious flat benefits from its own entrance and is well-presented throughout. The apartment consists of a generous open-plan kitchen/reception/dining area, with modern, fully integrated appliances, a well-appointed bathroom and two double bedrooms, both with built-in storage. The apartment also has a beautiful private rear garden.

Holland Road is located within the Royal Borough of Kensington & Chelsea and has easy access to the restaurants, boutiques and transport links of Holland Park Avenue, Westfield London and Kensington High Street.







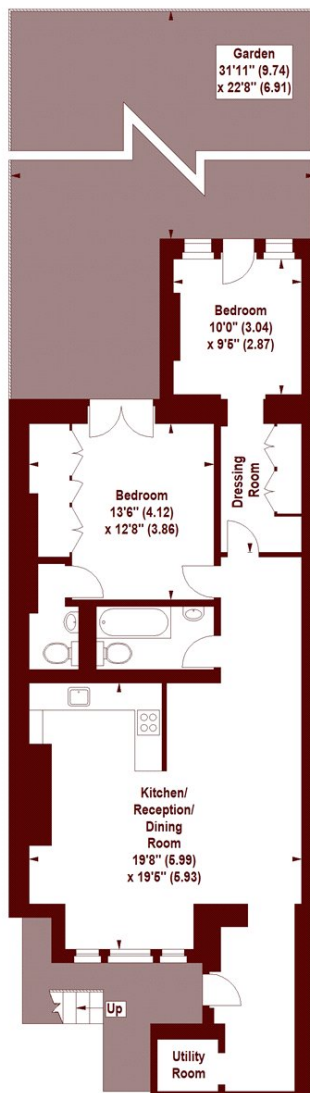


STEP INSIDE HOLLAND ROAD

Holland Road, W14

APPROX. GROSS INTERNAL FLOOR AREA 945 SQFT / 87.79 SQM

Key :
CH - Ceiling Height



LOWER GROUND FLOOR

The floor plan is not to scale and measurements and areas shown are approximate and therefore should be used for illustrative purposes only. The plan has been prepared in accordance with the RICS code of Measuring Practice and whilst we have confidence in the information produced, it must not be relied on. If there is any aspect of particular importance, you should carry out or commission your own inspection of the property.
Copyright of FeaturePRO.

Holland Park
020 7605 6890

Energy Rating: C We aim to make our particulars both accurate and reliable. However, they are not guaranteed; nor do they form part of an offer or contract. If you require clarification on any points then please contact us, especially if you're traveling some distance to view. Please note that appliances and heating systems have not been tested and therefore no warranties can be given as to their good working order

MARSH &
PARSONS