



## OLD KENT ROAD, PECKHAM, SE15

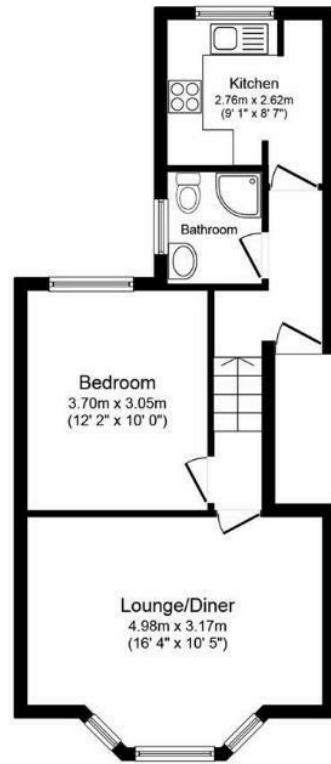
### 2 BED APARTMENT

£2,100 PER MONTH

Are you looking for a home in Peckham? Look no further! We're thrilled to offer this 2-bedroom apartment in a modern and secure building. The apartment consists of two double bedrooms, lounge/diner, separate fitted kitchen, and 3-piece bathroom suite and a private terrace

Located just a short walk from local transport links and amenities in SE15, this apartment is an ideal place to call home.

**Hemmingfords**



**Floor Plan**

Floor area 45.0 sq. m. (484 sq. ft.) approx

Total floor area 45.0 sq. m. (484 sq. ft.) approx

This plan is for illustration purposes only and may not be representative of the property. Produced by KeyAGENT



Energy Efficiency Rating		Current	Potential
Very energy efficient - lower running costs			
(92 plus) A			
(81-91) B			
(69-80) C			73
(55-68) D		50	
(39-54) E			
(21-38) F			
(1-20) G			
Not energy efficient - higher running costs			
<b>England &amp; Wales</b>		EU Directive 2002/91/EC	

Agents Note: Whilst every care has been taken to prepare these particulars, they are for guidance purposes only. All measurements are approximate and are for general guidance purposes only and whilst every care has been taken to ensure their accuracy, they should not be relied upon and potential buyers/tenants are advised to recheck the measurements

Hemmingfords Lettings  
34 Upper Street  
London  
N1 0PN

020 3890 7470  
info@hemmingfords.co.uk  
www.hemmingfords.co.uk

**Hemmingfords**