



Malden Road, Cheam

Guide Price £780,000



Malden Road

Cheam

Spacious five bedroom terraced house in Cheam with modern kitchen, three bathrooms, private garden, two receptions, and views of Cheam Recreation Ground. Close to schools and local amenities.

Council Tax band: E

Tenure: Freehold

EPC Energy Efficiency Rating: C

- Bright and spacious entrance featuring a newly fitted contemporary door
- Five Bedroom Terrace House
- Modern, custom-made dressing room
- Modern Open Plan Kitchen
- Hardwood Flooring Downstairs
- Five Double Bedrooms, Three Bathrooms
- Two Reception Rooms
- Good Sized Private Garden offering direct access through elegant patio bi-folding doors
- Newly installed EV charger point'
- Close to Shops
- In Nonsuch and Wallington High School for Girls catchment area



This impressive five bedroom terraced house offers spacious and versatile accommodation, perfect for families seeking comfort and convenience in a desirable Cheam location. The ground floor features two well-proportioned reception rooms, ideal for entertaining or relaxing with family, complemented by elegant hardwood flooring that adds warmth and character to the space. The modern open plan kitchen is a true highlight, boasting contemporary fittings and ample room for dining, making it the heart of the home. Each of the five bedrooms is a generous double, providing flexibility for growing families, guests or a home office. The property benefits from three stylish bathrooms, ensuring convenience for all residents. Large windows throughout the house allow for plenty of natural light and offer pleasant views, particularly at the rear where you can enjoy vistas of Cheam Recreation Ground. Ideally situated within walking distance of Cheam Park Farm Primary School and falling within the highly regarded catchment areas for Nonsuch and Wallington High School for Girls

Outside, the property features a good sized private garden and patio, providing a wonderful extension of the living space and a tranquil retreat for outdoor dining, play or gardening. The garden is mainly laid to lawn with a patio area, making it easy to maintain while offering plenty of room for children to play or for hosting summer gatherings. Mature shrubs and fencing provide privacy and a sense of seclusion, while the outlook over the adjacent Cheam Recreation Ground enhances the feeling of open space and greenery. The property's location ensures that you are never far from local parks, perfect for leisurely walks, picnics or sports activities. For those who appreciate both indoor and outdoor living, this house offers an ideal balance, with the garden accessible directly from the kitchen and living areas, making it easy to enjoy the outdoors throughout the year. With its combination of spacious interiors, modern finishes and attractive outside space, this property is a rare find in a sought-after part of Cheam.

Malden Road, Cheam, Sutton, SM3

Approximate Area = 1870 sq ft / 173.7 sq m

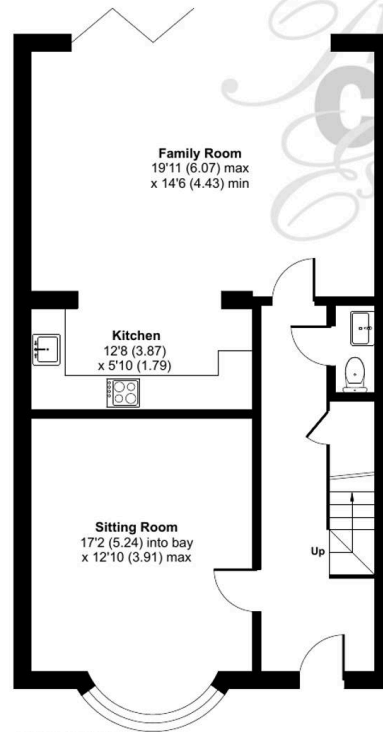
Limited Use Area(s) = 12 sq ft / 1.1 sq m

Total = 1882 sq ft / 174.8 sq m

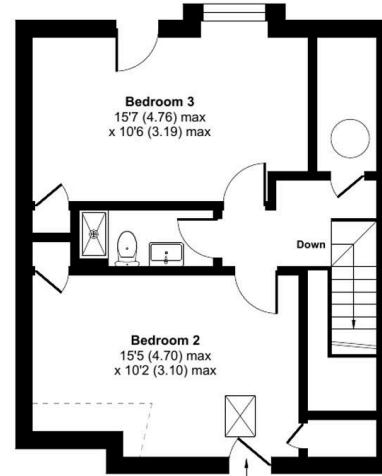
For identification only - Not to scale



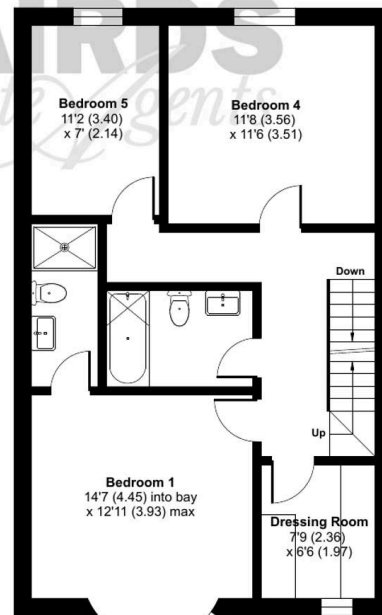
Denotes restricted head height



GROUND FLOOR



SECOND FLOOR



FIRST FLOOR





Cairds The Estate Agents

Cairds The Estate Agents, 128-130 High Street - KT19 8BT

01372 743033 • homes@cairds.co.uk • www.cairds.co.uk