



# BEAUFORT GREEN

# Inglethorpe Street, SW6

## £700,000

A larger than usual first floor period conversion on the Alphabet streets. The property will be offered with a share of the freehold and ownership of the roof space to allow for extensions subject to planning.





BEAUFORT GREEN

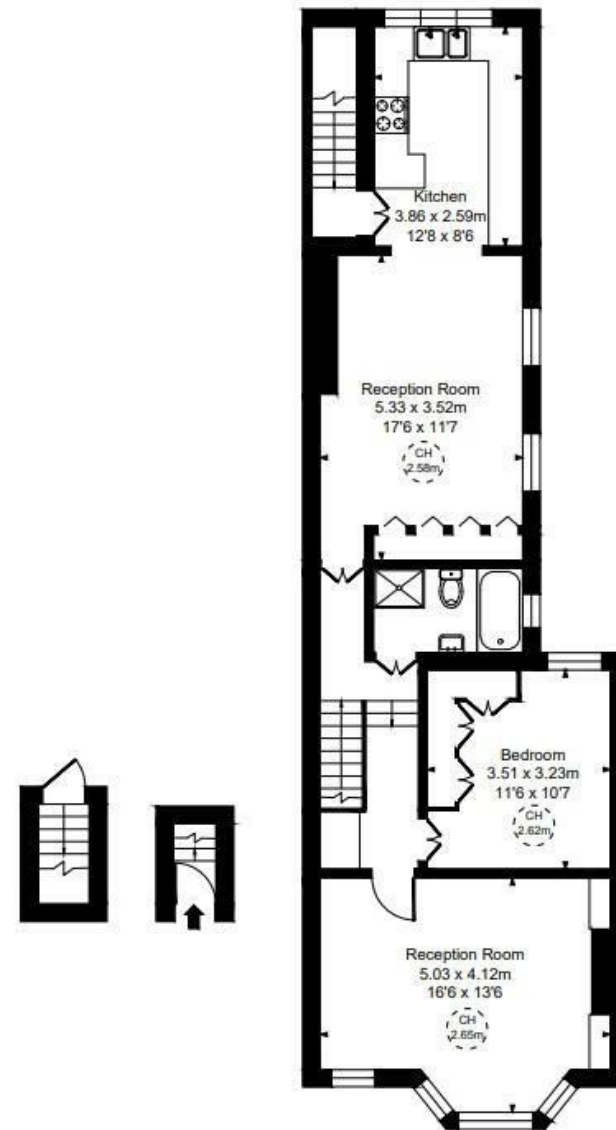
# BEAUFORT GREEN

Inglethorpe Street, SW6  
Approximate Gross Internal Area  
73.86 sq m / 795 sq ft  
(CH = Ceiling Heights)



## At a Glance.

- Top Floor Period Conversion
- Potential to Extend Subject to Planning
- Share of Freehold
- Alphabet Streets



Ground Floor

First Floor

# BEAUFORT GREEN

02074594100

[charlie@beaufortgreen.co.uk](mailto:charlie@beaufortgreen.co.uk)

---

263 New Kings Road  
London  
SW16 1DB