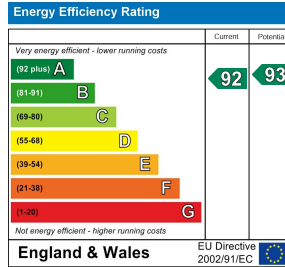
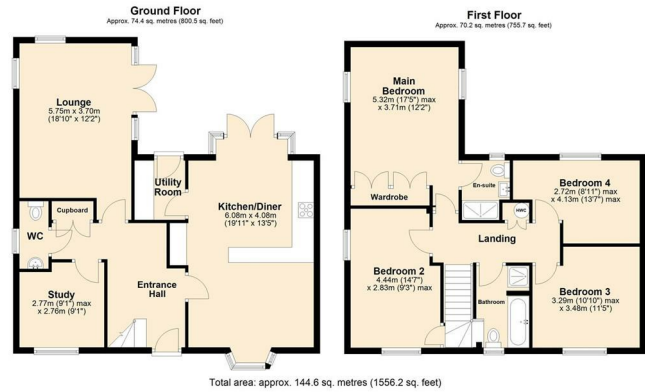




26 | Haldane Drive | Cringleford | NR4 7FZ

£2,000 PCM

 **BUTTERFLY**   
SALES, LETTINGS & PROPERTY MANAGEMENT



## Description

This spacious family home, situated within a modern development, offers a well designed layout suited to contemporary living. The property features four generous double bedrooms, including a main bedroom with en-suite and built-in storage. The bay-fronted kitchen/diner includes integrated appliances and provides access to the rear garden. A bright triple-aspect lounge also opens onto the garden, while a separate study and utility room add further practicality. The property benefits from gas central heating, double glazing, and solar panels for improved energy efficiency.

Outside, a tandem driveway leads to a single garage with light and power. The rear garden is enclosed and low maintenance, mainly laid to lawn with a patio area. The property is well positioned for access to major employers, road links, and local amenities, making it a practical choice for families or professionals.

## Key features

- 4 bedroom detached family home offering over 1,550 sq. ft of accommodation.
- Second reception room, ideal as a study, snug, or playroom
- Dual aspect main bedroom with built-in wardrobes, and en-suite shower room
- Gas central heating, double glazing, and solar panels for energy efficiency
- Located on the popular Cringleford Heights development
- Triple aspect lounge with patio doors to the rear garden
- Open plan kitchen/dining room plus separate utility room
- Three further double bedrooms and a family bathroom with bath and separate shower
- Tandem driveway, single garage, and an enclosed low maintenance rear garden
- Available Now

Council Tax Band & Local Authority: F, South Norfolk  
Deposit Required: £2,307

You can also scan the QR code to view the property online. This will take you directly to our website, where you'll find additional photos, detailed floorplan, and all the key information in line with Parts A, B, and C of the Material Information guidance for property listings. You'll also be able to browse our other available properties there.



Butterfly Lettings | 6 Church Lane | Eaton | NR4 6NZ  
hello@butterflylettings.co.uk  
www.butterflylettings.co.uk  
**01603 870870**



Butterfly Lettings, trading as Butterfly Homes, and its representatives are not authorised to make statements or assurances about the property, whether on their own behalf or on behalf of the client. No responsibility is accepted for any statements contained in these particulars, which do not form part of any offer or contract. We have taken care to ensure that the details provided for each property are accurate at the time of listing. However, the information supplied is intended as a guide only, and we do not obtain confirmation from the seller's legal representative when preparing it. Buyers should verify any leasehold details, charges, or other matters through their own legal representatives. All measurements, areas, and distances are approximate. Fixtures, fittings, and appliances have not been tested, so we cannot guarantee that they are in working order. It should not be assumed that the property has all necessary planning permissions, building regulations, or other consents. We recommend checking the local council's website for information on conservation areas, flood risks, tree preservation orders, planning applications, and other relevant matters. We also advise reviewing the property and surrounding area using Google Maps or Street View before attending a viewing. Photographs are for illustration only and should not be taken as confirmation that any items shown are included in the sale. If any particular detail is important to you, please seek independent professional verification before proceeding. Referral Fees: Butterfly Homes may receive a referral fee from recommended solicitors, mortgage advisers, or other service providers. Any referral arrangement will not affect the cost or quality of the service provided.

We are Butterfly Lettings LTD trading as Butterfly Homes with registered number 15893663 and address C/O Shaw & Co 3 Colegate Norwich Norfolk NR3 1BN