



Let **UK** Home

1 Bedrooms

House

Located in London

£3,900 Per Month



info@letukhome.co.uk

<https://www.letukhome.co.uk/>

01795 358 886



2 Principal Place, Worship Street London

EC2A 2FE



Let UK Home are excited to offer this spectacular one bedroom apartment in the heart of Principal Tower in City of London.

The flat comprises a spacious open kitchen with a stylishly attached dining area, a magnificent living room leading to a private balcony, one bright bedroom with fitted wardrobe and ensuite. A virtual viewing is provided.

The development will provide a range of facilities such as concierge service, swimming pool, spa, gym, audio-visual room and private business lounge.

The apartment is close to the City of London, one of the most important financial centers in the world, and Shoreditch, one of the most creative and individual areas in London, with many cultural venues such as galleries, theater museums, and concert halls.

The area is surrounded by prestigious schools and abundant educational resources, including King's College London (KCL), London Business School, University College London (UCL), London School of Economics and Political Science (LSE), Cass Business School, City St George's, University of London, and Queen Mary University of London (QMUL). Living here makes commuting to school very convenient.

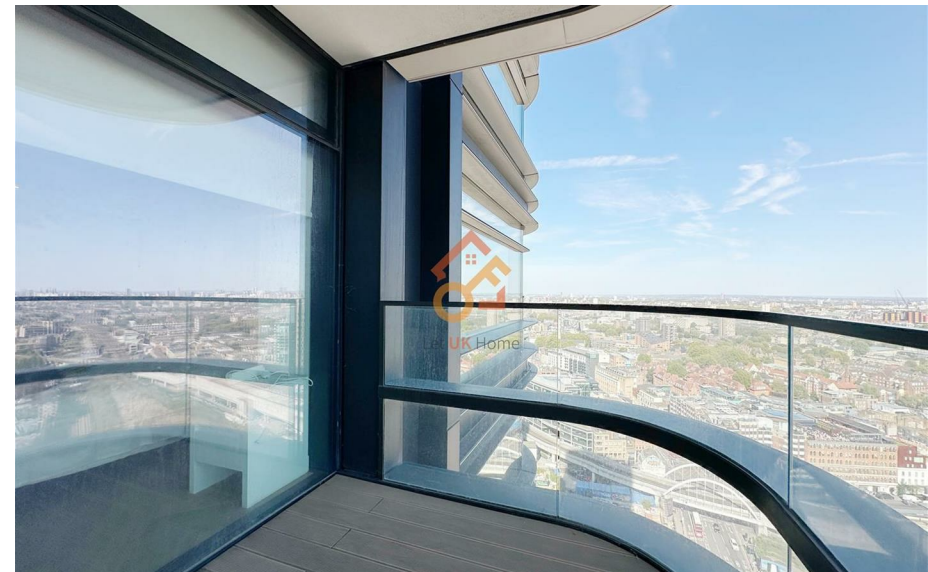
It is adjacent to five major underground and train stations, such as Liverpool Street, Shoreditch High Street, Old Street, and Moorgate. Liverpool Street Station is one of the busiest stations in the UK, with six underground lines intersecting here,

2 Principal Place, Worship Street London

£3,900 Per Month



- 27th Floor
- Swimming Pool
- Cinema & Game Room
- Virtual Tour Available
- City of London
- Concierge Service & 24h Security
- The Gym & The Spa
- Residents Lounge
- Adjacent to 5 Tube and Train Stations
- EPC Rating: B



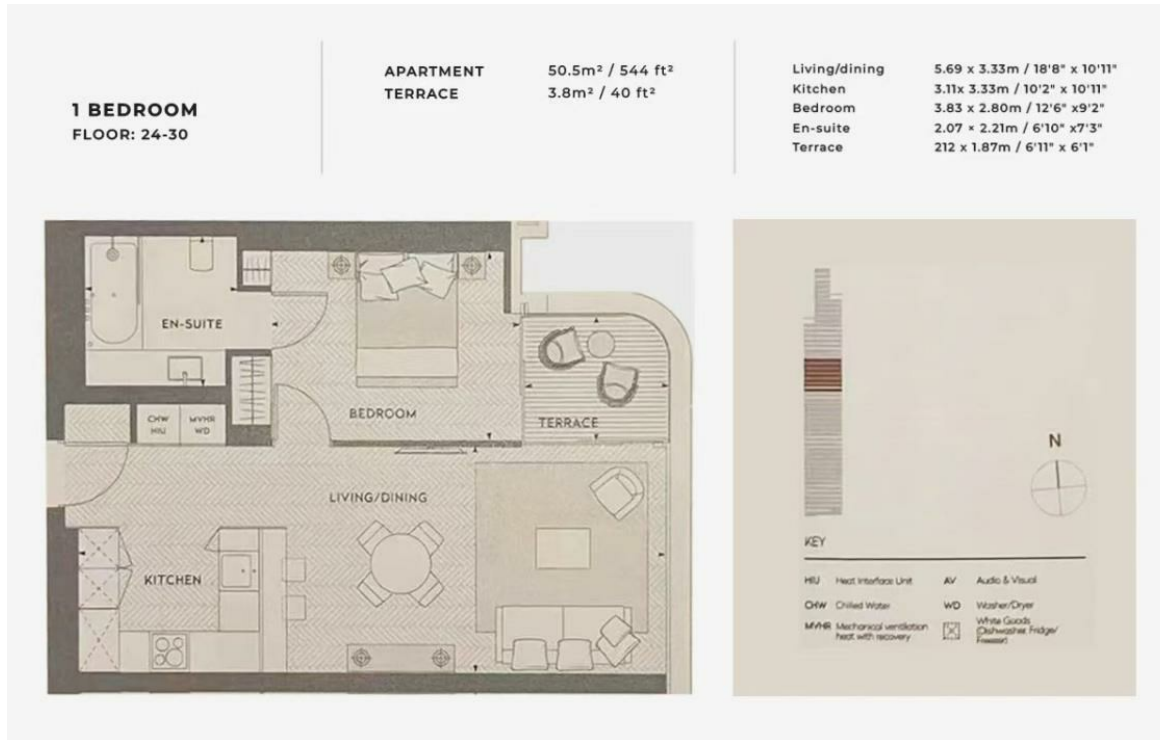


Let **UK** Home

3F 2 Eastbourne Terrace
 Paddington
 London
 W2 6LG

01795 358 886

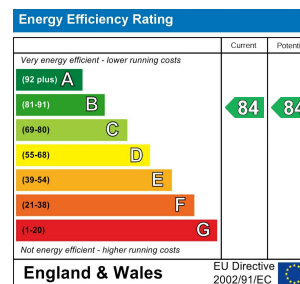
info@letukhome.co.uk



Council Tax Band: E

Local Authority:

Agents Note: Whilst every care has been taken to prepare these particulars, they are for guidance purposes only. All measurements are approximate and are for general guidance purposes only and whilst every care has been taken to ensure their accuracy, they should not be relied upon and potential buyers/tenants are advised to recheck the measurements.



<https://www.letukhome.co.uk/>