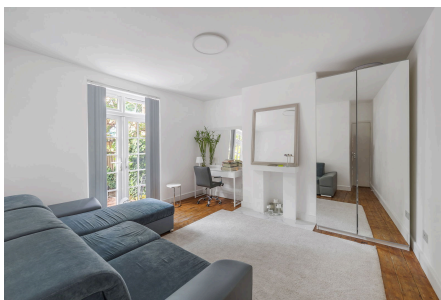


Your Logo

## Ascalon House, SW8

£475,000

🛏 2 🚿 1 🚗 1

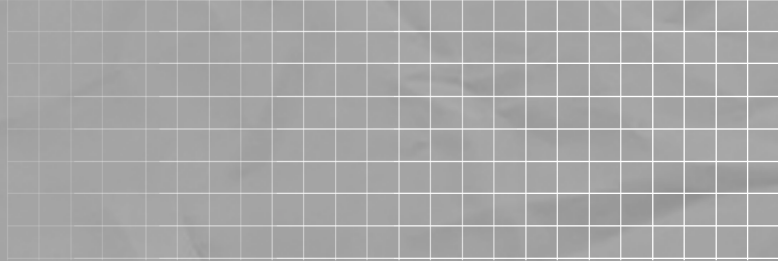


Please Quote CV0910 For All Enquiries

Welcome to Ascalon House, a contemporary and stylish residence situated in the vibrant area of Battersea, London. This stunning flat offers an exceptional blend of modern living with convenient city access, making it an ideal choice for professionals, couples, or investors.

This modern and stylish two-bedroom flat that offers comfortable living in a prime London location. Whether you're looking for a new home or a solid investment, this property provides everything you need for contemporary city living. Don't miss out on the chance to make this desirable flat your own.

*Your Logo*



# Your Logo

## Key Features

- Please Quote CV0910 For All Enquiries
- Guide Price: £475,000 - £500,000
- 2 Bedroom Flat - (666sqft - 61.9sqm)
- Ground Floor with Large Private Garden
- Newly Renovated with Stylish Interiors and Modern Design
- Walking distance to Battersea Power station
- Chain Free
- Leasehold
- Investment Opportunity

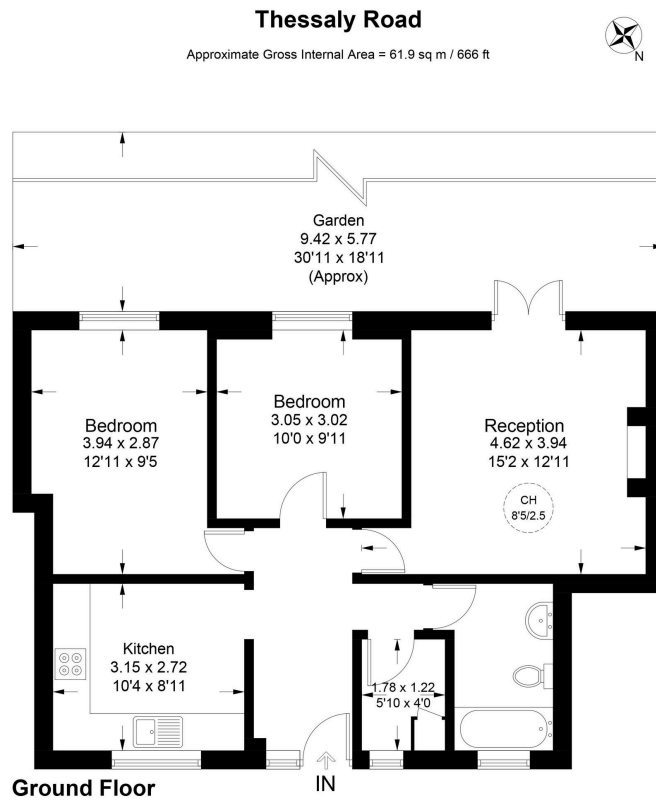


Illustration for identification purposes only, not for valuation purposes.  
measurements are approximate, not to scale.