

## Fulham Road, SW6

£400,000

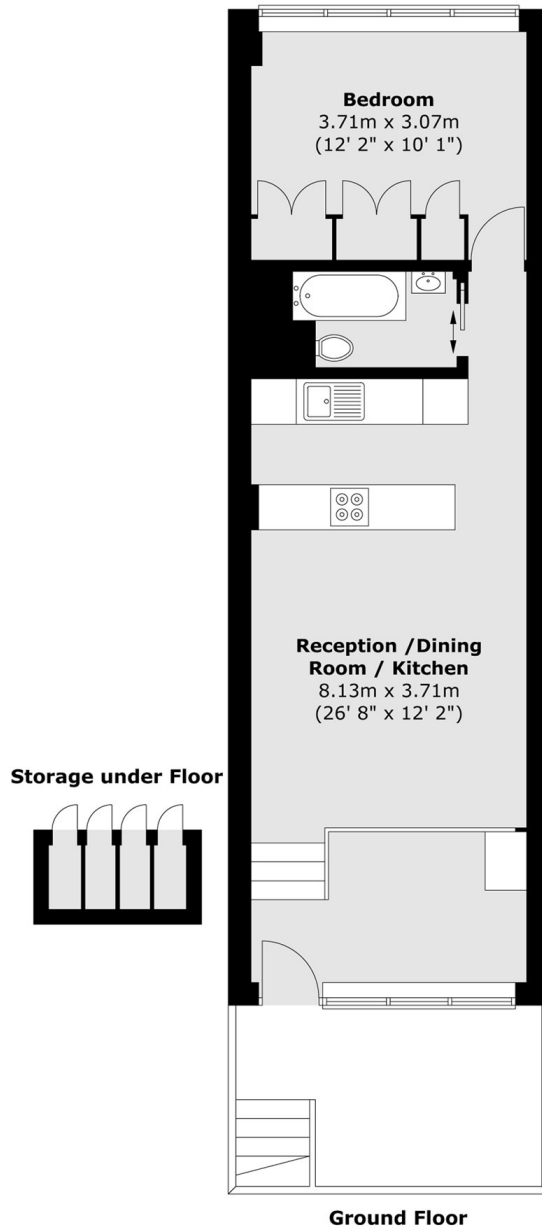
Set on the ground floor, this recently refurbished flat is finished to a high standard, offering open plan living with generous ceiling heights and large south facing windows. Wooden flooring runs throughout, complemented by a contemporary kitchen with integrated appliances. Accessed via communal gardens, the private patio provides a peaceful outdoor space. A versatile office area includes a built-in daybed with storage, while the bedroom is quietly positioned to the rear and features bespoke fitted wardrobes.

Situated just off Fulham Road on the Chelsea border, this flat enjoys easy access to Fulham Broadway, Parsons Green, and the iconic King's Road. Residents benefit from a wealth of local amenities, including a fine selection of shops and restaurants. Eel Brook Common is also just a short stroll away, providing a green space for relaxation and recreation.

### Features

- Immaculately Refurbished
- Private Entrance
- Communal Gardens
- Chain Free
- Private Patio
- Long Lease

# Fulham Road, London, SW6



Total area (approx.) : 47.4 sq. m (510 sq. ft)  
Total storage area (approx.) : 1.7 sq. m (18 sq. ft)