



66 Dannett Street

, Leicester, LE3 5RJ

Asking Price **£185,000**

Nestled in the vibrant West End suburb of Leicester, this property boasts an excellent location with easy access to De Montfort University, Leicester Royal Infirmary, and the City Centre, where you'll find a variety of everyday conveniences in nearby Woodgate. This generously sized and well-equipped living space presents a fantastic opportunity for both investors and first-time buyers. The layout includes two inviting reception rooms, a modern fitted kitchen, three bedrooms on the upper floor, and a ground floor bathroom complete with a shower, all complemented by a charming walled garden

- Two bedrooms
- Ideally located
- Investment opportunity
- No chain
- Call to view

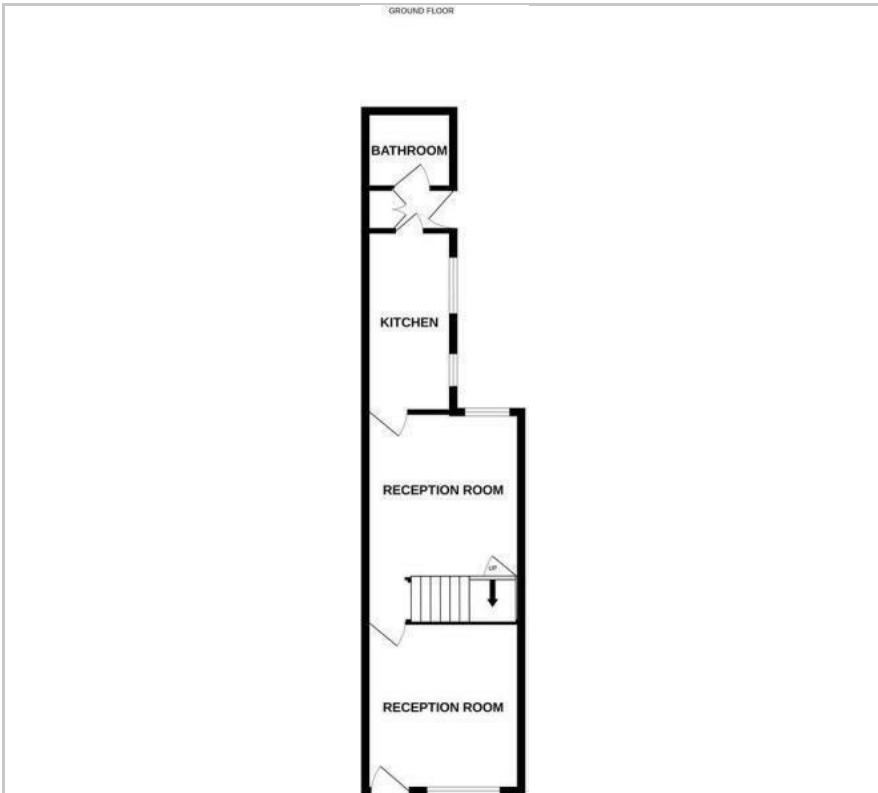
Viewing

Please contact our Berkley Leicester Office on 0116 2544755 if you wish to arrange a viewing appointment for this property or require further information.



3 1 1 D

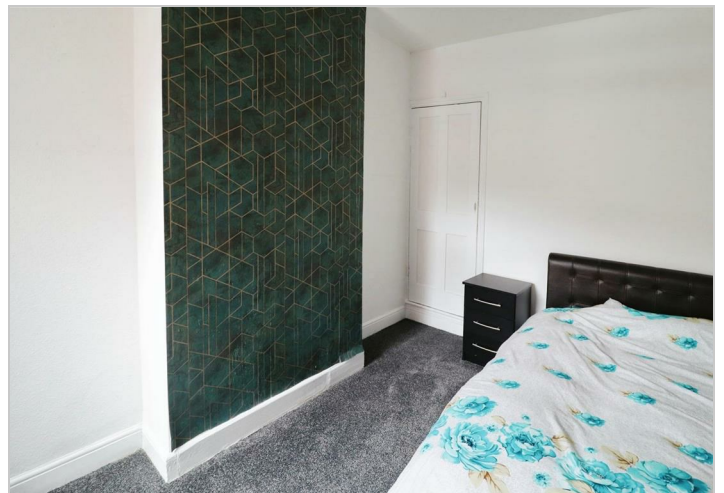
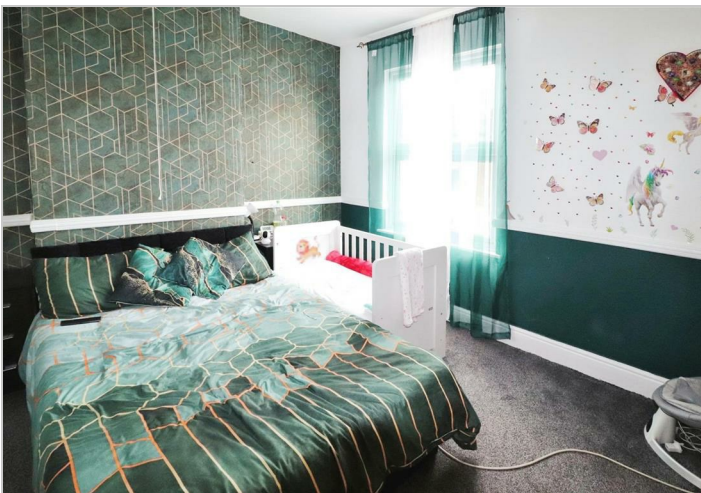
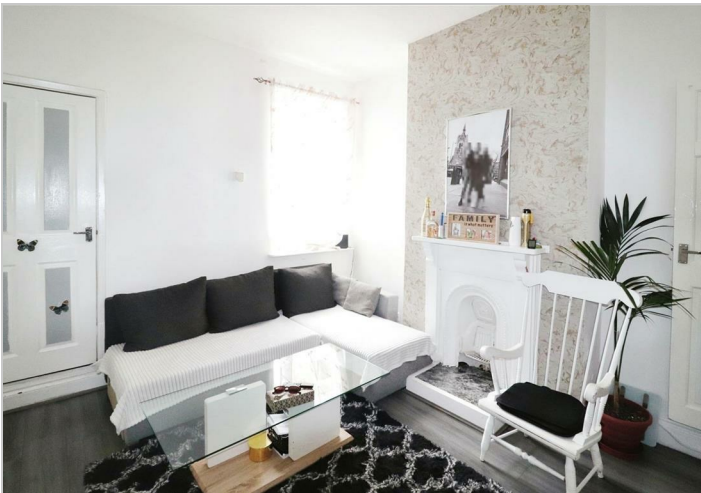
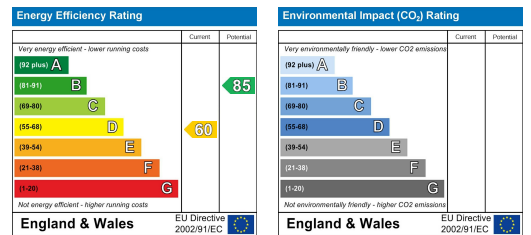
Floor Plan



Area Map



Energy Efficiency Graph



These particulars, whilst believed to be accurate are set out as a general outline only for guidance and do not constitute any part of an offer or contract. Intending purchasers should not rely on them as statements of representation of fact, but must satisfy themselves by inspection or otherwise as to their accuracy. No person in this firm's employment has the authority to make or give any representation or warranty in respect of the property.

75 Hinckley Road, West End, Leicester, Leicestershire, LE3 0TD
Tel: 0116 2544755 **Email:** info@berkleystates.co.uk **berkleystates.co.uk**