

Artichoke Hill, E1W

£375,000

A beautifully presented two-bedroom split-level apartment, ideally located in the heart of West Wapping.

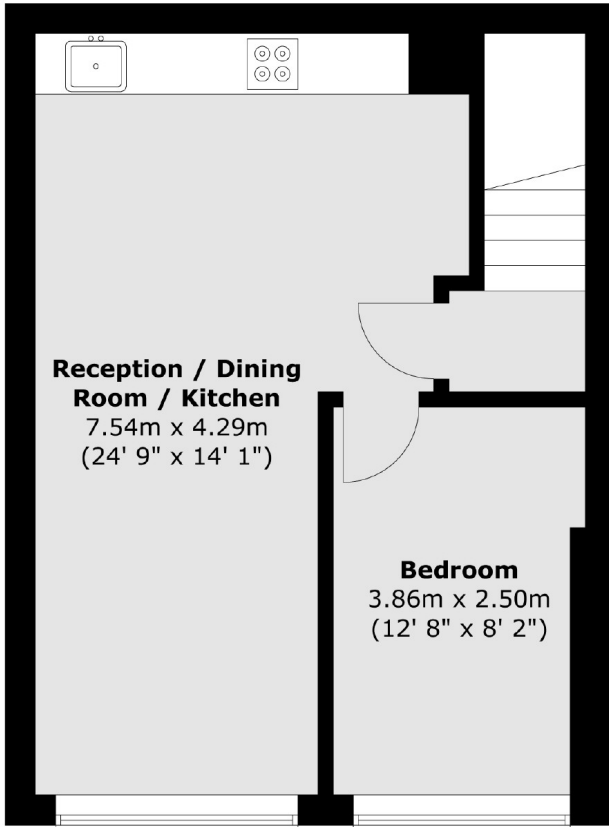
Artichoke Hill boasts a convenient location close to Tower Hill Station and Shadwell DLR, with Aldgate and Aldgate East Underground stations also within easy walking distance.

Features

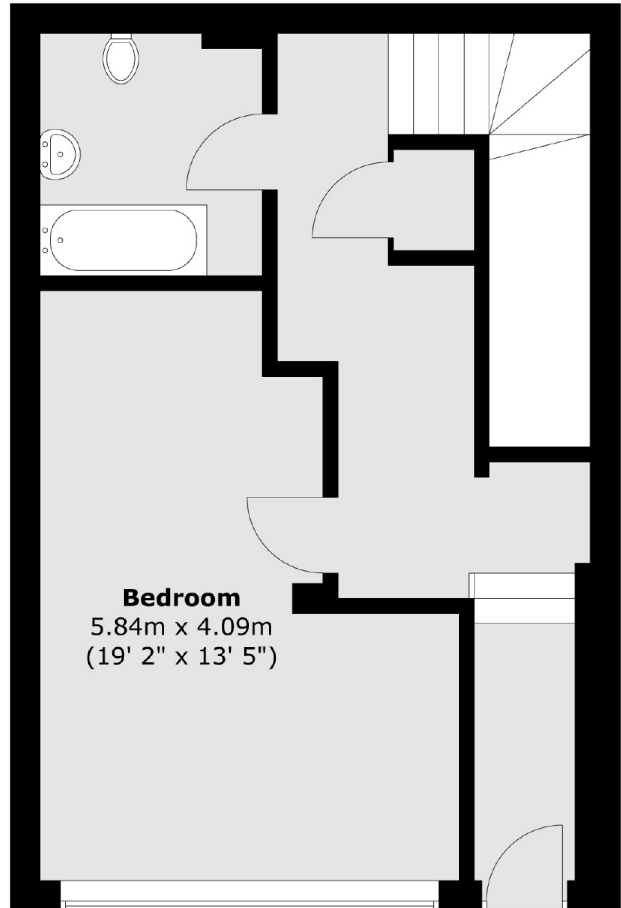
- Two Double Bedrooms
- Split Level
- Chain Free
- West Wapping
- Long Lease
- Open Planned Reception

Artichoke Hill, London, E1W

Lower Ground Floor



Upper Ground Floor



Total area (approx.) : 87.1 sq. m (937 sq. ft)