



*jordan fishwick*

Moorland Gardens, Moorland Road Birch Vale





## Moorland Gardens, Moorland Road Birch Vale High Peak SK22 1BS

£550,000



### The Property

\*\*\* Super energy efficient luxury new homes. Larger than average with exceptionally low running costs. Stunning countryside views and a hi spec finish \*\*\* PLOT H4 \*\*\* PLOT 3 ALREADY SOLD \*\*\* One of the first of it's kind for the area! - From £550,000 \*\*\* Forming part of a small, select, new-build development in Birch Vale, focused on delivering executive, ECO-style homes to those looking to reduce their carbon footprint. With stunning views over Lantern Pike and adjoining open countryside. One of six stunning properties boasting solar panels with battery storage, superior levels of insulation, air source heat pump, upvc triple glazed windows and EV car charging ports. Complimented by a high spec finish including a bespoke LochAnna kitchen with Quartz counters and Neff Induction hob, Oak internal doors, contemporary bathroom and en-suite facilities. Aesthetically pleasing with contrast Stone window surrounds, timber framed canopy porch, landscaped front gardens with shed/cycle stores and driveway parking. This larger than average detached dormer bungalow property has just been released and offers three bedrooms, three en-suites (plus storage) arranged over two floors. These super energy efficient homes have an expected monthly energy cost per average household usage from just £50 per month! Comprising: entrance hall, wc, dining kitchen with bi-fold doors, utility room & living room. Ground floor bedroom with en-suite or could be used as a secondary reception room. To the first floor the galleried landing offers space for a home office and access to two first floor double bedrooms with separate en-suite shower rooms and storage. Large plot with stunning views within easy access to the open countryside on your doorstep, there is no better place to live! Reservations being taken. \*\*\* External photos are taken from various vantage points within the development \*\*\*





- New Build, Freehold, Eco Homes With Stunning Open Views Over Lantern Pike
- 10 Year Warranty
- High Energy Efficiency
- Countryside Location
- Air Source Heat Pumps
- Solar Panels With Battery Storage and EV Charging
- Driveway and Lanscaped Gardens
- Bespoke Kitchens with Quartz Worktops

Postcode

SK22 1BS

EPC Rating

Local Authority

High Peak

Council Tax

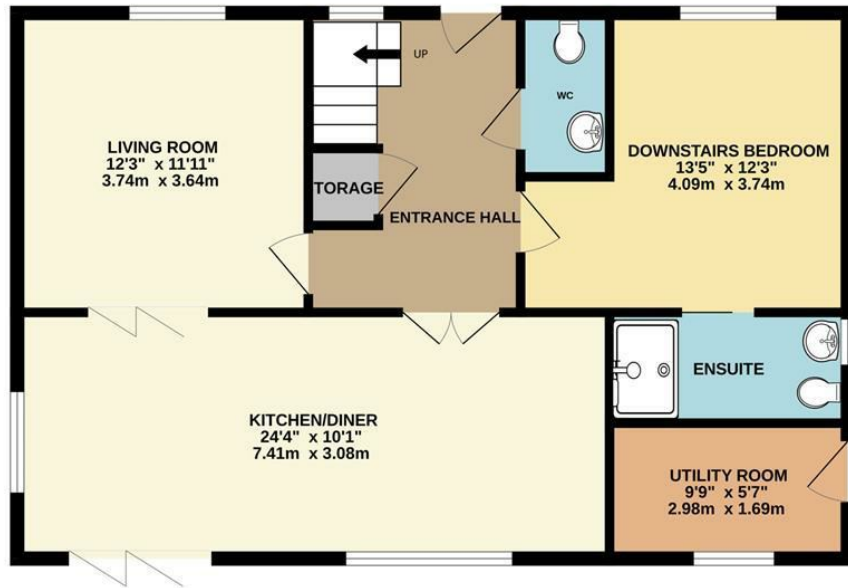
New Build

Energy Efficiency Rating		
	Current	Potential
Very energy efficient - lower running costs		
(92 plus) <b>A</b>		
(81-91) <b>B</b>		
(69-80) <b>C</b>		
(55-68) <b>D</b>		
(39-54) <b>E</b>		
(21-38) <b>F</b>		
(1-20) <b>G</b>		
Not energy efficient - higher running costs		
<b>England &amp; Wales</b>	EU Directive 2002/91/EC 	

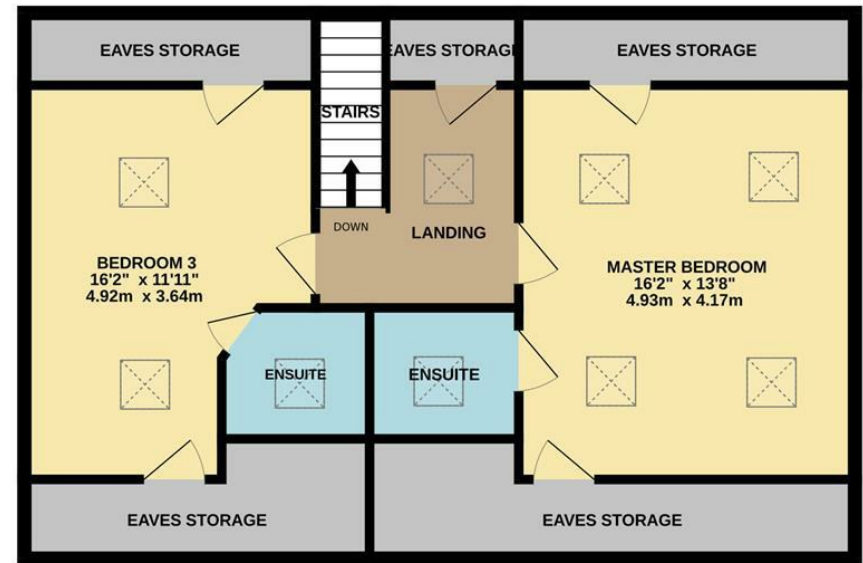




GROUND FLOOR



1ST FLOOR



Whilst every attempt has been made to ensure the accuracy of the floorplan contained here, measurements of doors, windows, rooms and any other items are approximate and no responsibility is taken for any error, omission or mis-statement. This plan is for illustrative purposes only and should be used as such by any prospective purchaser. The services, systems and appliances shown have not been tested and no guarantee as to their operability or efficiency can be given.  
Made with Metropix ©2025



These particulars are believed to be accurate but they are not guaranteed and do not form a contract. Neither Jordan Fishwick nor the vendor or lessor accept any responsibility in respect of these particulars, which are not intended to be statements or representations of fact and any intending purchaser or lessee must satisfy himself by inspection or otherwise as to the correctness of each of the statements contained in these particulars. Any floorplans on this brochure are for illustrative purposes only and are not necessarily to scale.

Offices at: Chorlton, Didsbury, Disley, Hale, Glossop, Macclesfield, Manchester Deansgate, Manchester Whitworth Street, New Mills, Sale, Wilmslow and Withington

14 Market St, Disley, Cheshire, Stockport SK12 2AA

01663 767878

disley@jordanfishwick.co.uk  
www.jordanfishwick.co.uk