



7 Westbourne Terrace, Selby, YO89DF

SAVE TIME & BOOK YOUR VIEWING ON THE JIGSAW WEBSITE & CLICK 'REGISTER TO VIEW A PROPERTY' FROM OUR MAIN MENU

- Mid-Terrace
- Gas Central Heating
- Council Tax Band: B
- Three Bedrooms
- Freehold
- Two Reception Rooms
- On-Street Parking
- EPC: D
- Low Maintenance Rear Yard

£950 PCM

Three Bedroom Mid-Terrace | Over Three Storeys | Two Reception Rooms & Low Maintenance Rear Yard

Jigsaw Letting are pleased to welcome to the market this charming three-bedroom mid-terrace house located in the desirable area of Westbourne Terrace, Selby. This property boasts two reception rooms, perfect for entertaining guests or simply relaxing with your family. The low maintenance rear garden provides a lovely outdoor space to enjoy some fresh air without the hassle of extensive upkeep.

With three cosy bedrooms, this house offers ample space for a growing family or those in need of a home office. The family bathroom ensures convenience for all residents. Additionally, street parking is available, making coming home a breeze after a long day out.

Don't miss the opportunity to make this lovely house your new home. Contact us today to arrange a viewing and envision yourself living in this delightful property in Selby.

COUNCIL TAX BAND

Please note that the council tax band for the property has either been advised by the owner or we have sought from online resources. Whilst we endeavour to ensure our details are accurate and reliable, we strongly advise to make further enquiries before continuing.

HOW DO I APPLY FOR A PROPERTY?

To avoid disappointment please contact the office to request an application form for the property you wish to apply for following your viewing.

LETTINGS FEES UPON APPLICATION

Additional fees apply for this property and are as follows; 1 weeks rent holding fee for each property. Please note, the holding fee is deductible from the first month's rent on the property if successful. There will also be a bond for the property equal to 5 weeks rent which will be held for the duration of the tenancy with the DPS. Go to, www.jigsawletting.co.uk or call for more details

LETTINGS VIEWINGS

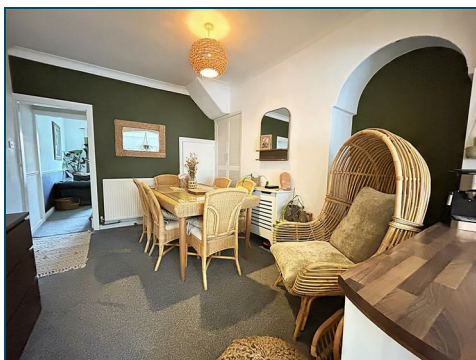
Strictly by appointment with the sole agents by contacting 01757 241123. If there is any point of particular importance to, that we will be pleased to provide additional information or to make any further enquiries. We will also confirm that the property remains available. This is particularly important if you are travelling some distance to view the property. A full copy of the EPC for the property is available upon request.

OPENING HOURS LETTING TEAM

Monday – Friday 9.00am to 5.00pm Saturday – 9.00am – 1.00pm

TO LET PROPERTY DETAILS

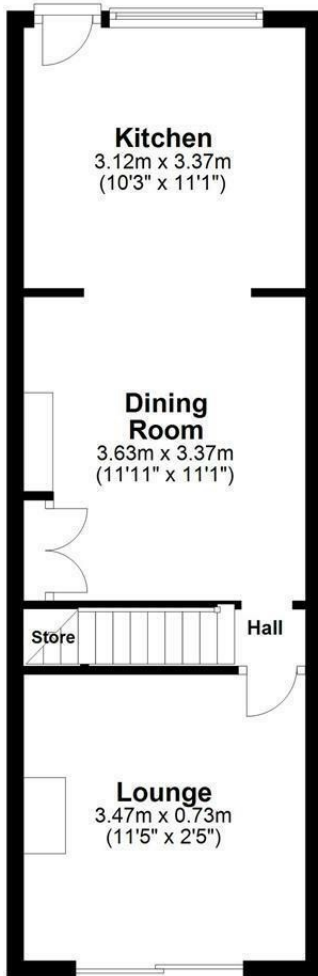
Whilst we endeavour to make our property details are accurate and reliable, if there is any point which is of particular importance to you, please contact us and we will be pleased to check the information. Do so particularly if contemplating travelling some distance. These particulars are issued in good faith but do not constitute representations of fact or form part of any offer or contract.





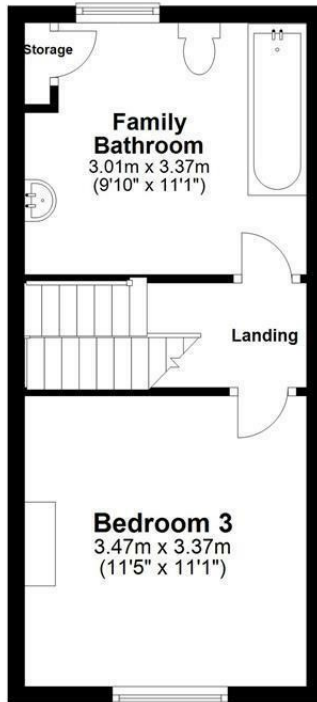
Ground Floor

Approx. 28.5 sq. metres (307.1 sq. feet)



First Floor

Approx. 26.7 sq. metres (287.4 sq. feet)

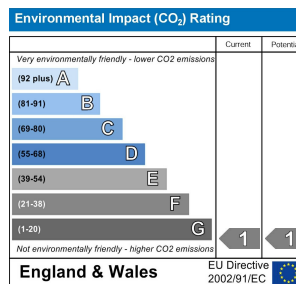
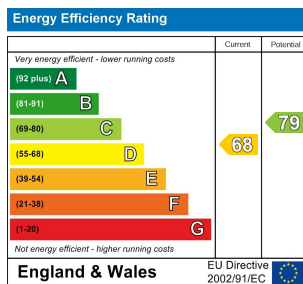


Second Floor

Approx. 26.2 sq. metres (282.5 sq. feet)



Total area: approx. 81.5 sq. metres (877.0 sq. feet)



11 Finkle Street, Selby, North Yorkshire, YO8 4DT
info@jigsawmove.co.uk | www.jigsawmove.co.uk | info@jigsawletting.co.uk | www.jigsawletting.co.uk
 Jigsaw Move : 08975826 VAT: 215610542 | Jigsaw Letting : 07385709 VAT: 847215227

