



JASON SIMMONS POWERED BY **exp**™ **UK**

@ jason.simmons@exp.uk.com

jasonsimmmons.exp.uk.com

☎ 01477 500 303

Bateman Close, Crewe

£210,000

3 1 1

- Modern three bedroom semi-detached home
- Good-sized Lounge
- Modern fitted kitchen
- Three good-sized bedrooms
- Well presented family bathroom
- Driveway parking and Garage
- Enclosed rear garden with patio laid to lawn
- Offered with NO ONWARD CHAIN
- Popular residential location with easy access to Crewe town centre
- Quote Ref; JS0070



Quote Ref: JS0070. Discover this modern three-bedroom semi-detached home on Bateman Close, Crewe, offered with NO ONWARD CHAIN. This property presents an excellent opportunity to acquire a comfortable home in a popular residential area with easy access to Crewe town centre.

The ground floor features a downstairs toilet, good-sized lounge perfect for relaxation and dining room leading to a fitted kitchen. Upstairs, you will find three comfortable bedrooms (master bedroom with En-suite) and a well-presented family bathroom, providing ample space.

Externally, the property benefits from driveway parking and a single garage, ensuring convenience. The enclosed rear garden with its patio area and lawn, offers a lovely outdoor space for enjoyment.



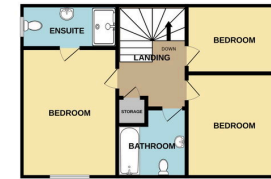


Enhanced by AI with Loop

GROUND FLOOR
624 sq.ft. (58.0 sq.m.) approx.

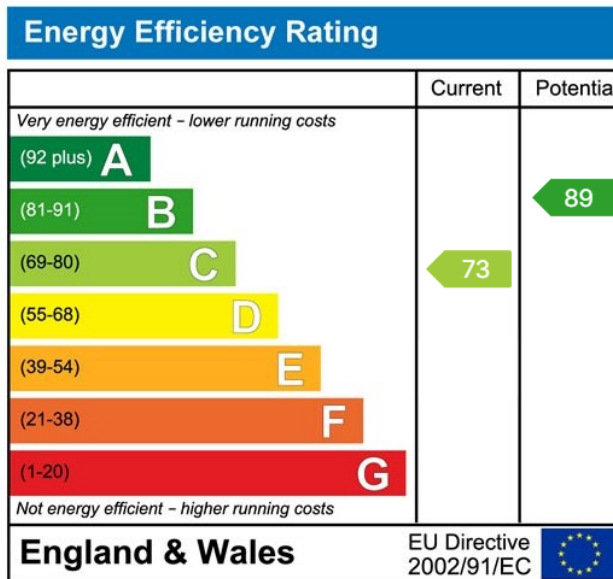


1ST FLOOR
442 sq.ft. (41.0 sq.m.) approx.



GARAGE

TOTAL FLOOR AREA: 1066 sq.ft. (99.0 sq.m.) approx.
While every attempt has been made to ensure the accuracy of the floorplan contained herein, measurements of doors, windows, rooms and any other items are approximate and no responsibility is taken for any error, omission or mis-statement. This plan is for illustrative purposes only and should be used as such for any prospective purchaser. The services, systems and appliances shown have not been tested and no guarantee as to their operation or efficiency can be given.
Made with Metrepro 12026



eXp World UK Ltd is a registered company at Level 37, 25 Canada Square, London, E14 5LQ.

Registered company number is 12016573. VAT Registration Number is 327 4120 29