

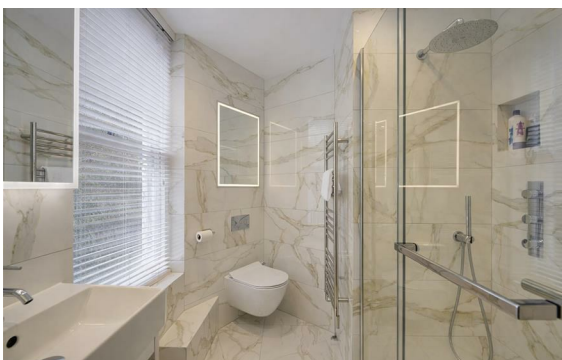


[Marylebone Road, Marylebone, London, NW1](#)

Rent £750 Per Month

1 Bed | 1 Bath | null Reception

Please call us on 020 7724 2233 or email us info@newingtonstates.com to book a viewing.



The apartment features a spacious reception room, a well-sized double bedroom with ample storage, and a separate fully fitted kitchen. The bathroom includes a shower over bath, while wooden flooring throughout enhances the clean, contemporary feel.

Ideally positioned close to the amenities of Marylebone and excellent transport links, including Baker Street Station. Residents also benefit from lift access and 24-hour porter service within this well-maintained development.

EPC rating: C

Energy Efficiency Rating: E

Agents Note: Whilst every care has been taken to prepare these particulars, they are for guidance purposes only. All measurements are approximate and are for general guidance purposes only and whilst every care has been taken to ensure their accuracy, they should not be relied upon and potential buyers/tenants are advised to recheck the measurements.

NEWINGTON
— ESTATES —

60 Upper Montagu Street

London

W1H 1SN

020 7724 2233

info@newingtonestates.com

<http://www.newingtonestates.com>