



DERBYSHIRE'S
— *Estate Agents* —

Yarcombe Cottage Yarcombe, Honiton, EX14
9BD

THREE BEDROOM PERIOD COTTAGE

Nestled in the heart of the picturesque village of Yarcombe, this beautifully presented three-bedroom period cottage perfectly blends timeless charm with modern comfort.

Full of character, the inviting sitting room features a cosy log burner, ideal for relaxing evenings — while the spacious kitchen/dining room is the true heart of the home, complete with a traditional Rayburn that adds both warmth and rustic appeal. A separate laundry room, utility area and ground floor shower room provide practical convenience for everyday living.

Upstairs, the first-floor landing opens through elegant French doors onto a delightful sun terrace, a wonderful spot for morning coffee or evening drinks — and also leads to a dedicated home

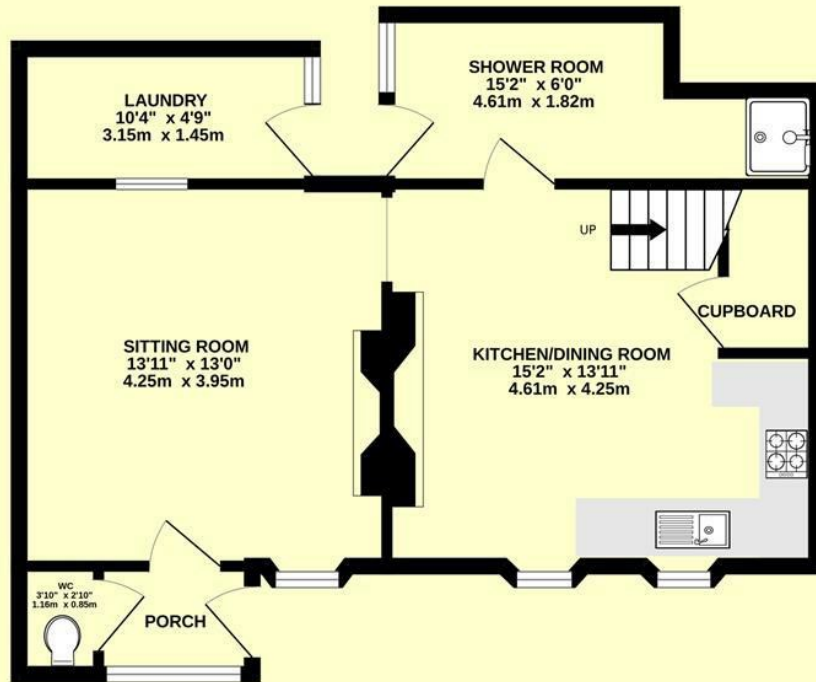
office, perfect for remote working. The stylish family bathroom boasts a classic roll-top bath, enhancing the cottage's period charm.

To the rear, the tiered garden is a true highlight, thoughtfully arranged with a pond and seating area positioned to take full advantage of the far-reaching views across the beautiful Yarty Valley.

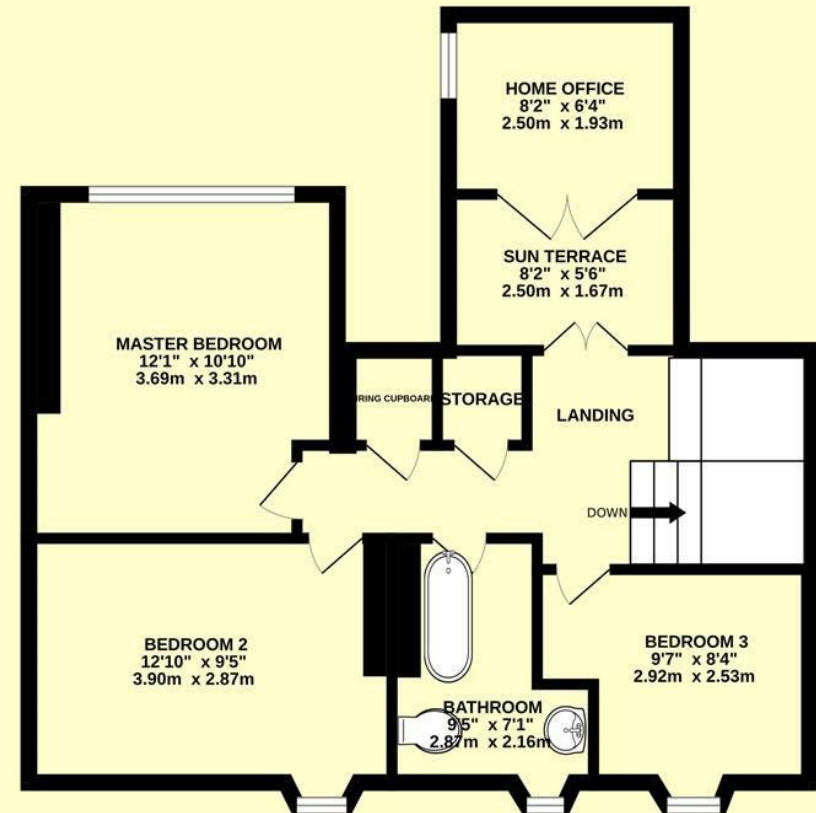
Whether entertaining or simply unwinding, this outdoor space offers peace and privacy in abundance.

With driveway parking and an enviable village setting, this enchanting cottage offers character, comfort and countryside views in equal measure — a rare opportunity in one of East Devon's most sought-after rural communities

GROUND FLOOR
525 sq.ft. (48.7 sq.m.) approx.



1ST FLOOR
565 sq.ft. (52.5 sq.m.) approx.



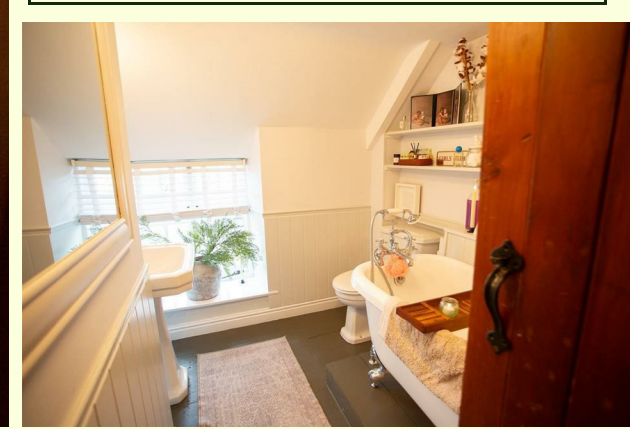
TOTAL FLOOR AREA : 1089 sq.ft. (101.2 sq.m.) approx.

Whilst every attempt has been made to ensure the accuracy of the floorplan contained here, measurements of doors, windows, rooms and any other items are approximate and no responsibility is taken for any error, omission or mis-statement. This plan is for illustrative purposes only and should be used as such by any prospective purchaser. The services, systems and appliances shown have not been tested and no guarantee as to their operability or efficiency can be given.

Made with Metropix ©2026



Directions -





DERBYSHIRE'S
— *Estate Agents* —

11, High Street, Chard, Somerset, TA20 1QF
www.derbyshires.net 01460 63600