



18 The Furlongs Bicton Heath Shrewsbury Shropshire

Monthly Rental Of £795

AVAILABLE LATE MARCH. An impressive partly furnished 1 bedroom first floor apartment within a historic Grade II listed building. Staircase from Porch Leads To An Entrance Hall, Superb Open Plan Living Room With Generous Kitchen/Dining Area, Double Bedroom with Double Wardrobe, Bathroom. Set In Landscaped Communal Grounds, Allocated Parking Space.

Convenient, Popular Location. No Pets or Smokers.

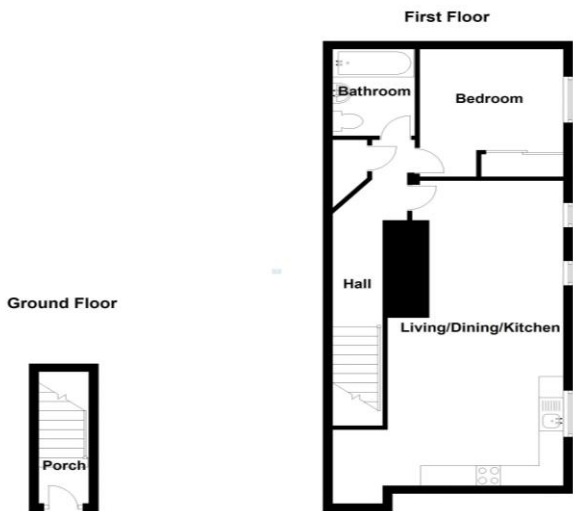
ZJ&B TENANT INFORMATION: Tenancies granted subject to contract following satisfactory credit and referencing checks. 1 weeks holding fee applicable to successful applicants. Deposit: 5 weeks rent and first month's rent payable in advance. Rent **EXCLUDES** utilities and council tax. Tenancies granted on a 12 month Assured Shorthold Tenancy unless otherwise agreed.



18 The Furlongs, Bicton Heath, Shrewsbury, Shropshire, SY3 5FW



<p>Accommodation includes: Accommodation comprises Entrance Porch Hall Attractive Open Plan Living 25' 1" x 11' 11" (7.64m x 3.63m) Bedroom 10' 6" x 9' 9" (3.20m x 2.97m) Bathroom Outside</p>	<p>Council Tax Band B Monthly Rental Of £795 per calendar month Deposit - £917.00 5 weeks rent Minimum Term of 12 months</p>
--	--



18 The Furlongs, Shrewsbury

Energy performance certificate (EPC) - For an energy certificate - 000UK

Energy performance certificate (EPC)

18, The Furlongs Bicton Heath Shrewsbury SY3 5FW		Energy rating D
Valid until	Certificate number	
8 April 2028	0238-0968-7364-6478-2920	

Property type
 Mid-terrace house

Total floor area
 57 square metres

Rules on letting this property
 Properties can be rented if they have an energy rating from A to E.
 If the property is rated F or G, it cannot be let, unless an exemption has been registered. You can read [guidance for landlords](#) on the [GOV.UK website](#) and [exemptions to the rules](#) on the [GOV.UK website](#).

Energy efficiency rating for this property
 This property's current energy rating is D. It has the potential to be B.
[See how to improve this property's energy performance.](#)

<https://www.energyperformancecertificate.gov.uk/energy-certificates/0238-0968-7364-6478-2920>

FLOOR PLANS FOR GUIDANCE ONLY