



# Discovery Tower

1 Terry Spinks Place, E16

Asking price £350,000

Large one bedroom apartment in Discovery Tower located in Canning Town next to the Tube Station. The property benefits from Residents gym, podium garden and roof top terrace and concierge service.

**CHESTERTONS**



# Discovery Tower

## 1 Terry Spinks Place, E16

- Large one bedroom apartment
- Modern development with concierge and residents gym
- Communal podium garden and roof terrace
- Open-plan kitchen with integrated appliances
- Master bedroom with built in wardrobes
- Sleek family bathroom
- Private balcony
- Close proximity to Canning town DLR and tube station



This large one bed apartment is located on the 3rd floor with an internal area of 563 sqft. Comprising an open plan kitchen and living area, bedroom with built-in wardrobes, and contemporary bathroom and private balcony.

Residents of Discovery Tower would have exclusive access to the resident's only gym and Podium garden and roof top terrace! Concierge service is also available.

Located very close to Canning Town station (Jubilee, DLR & Train Lines) giving swift access to Canary Wharf Financial District, London City Airport, Stratford.

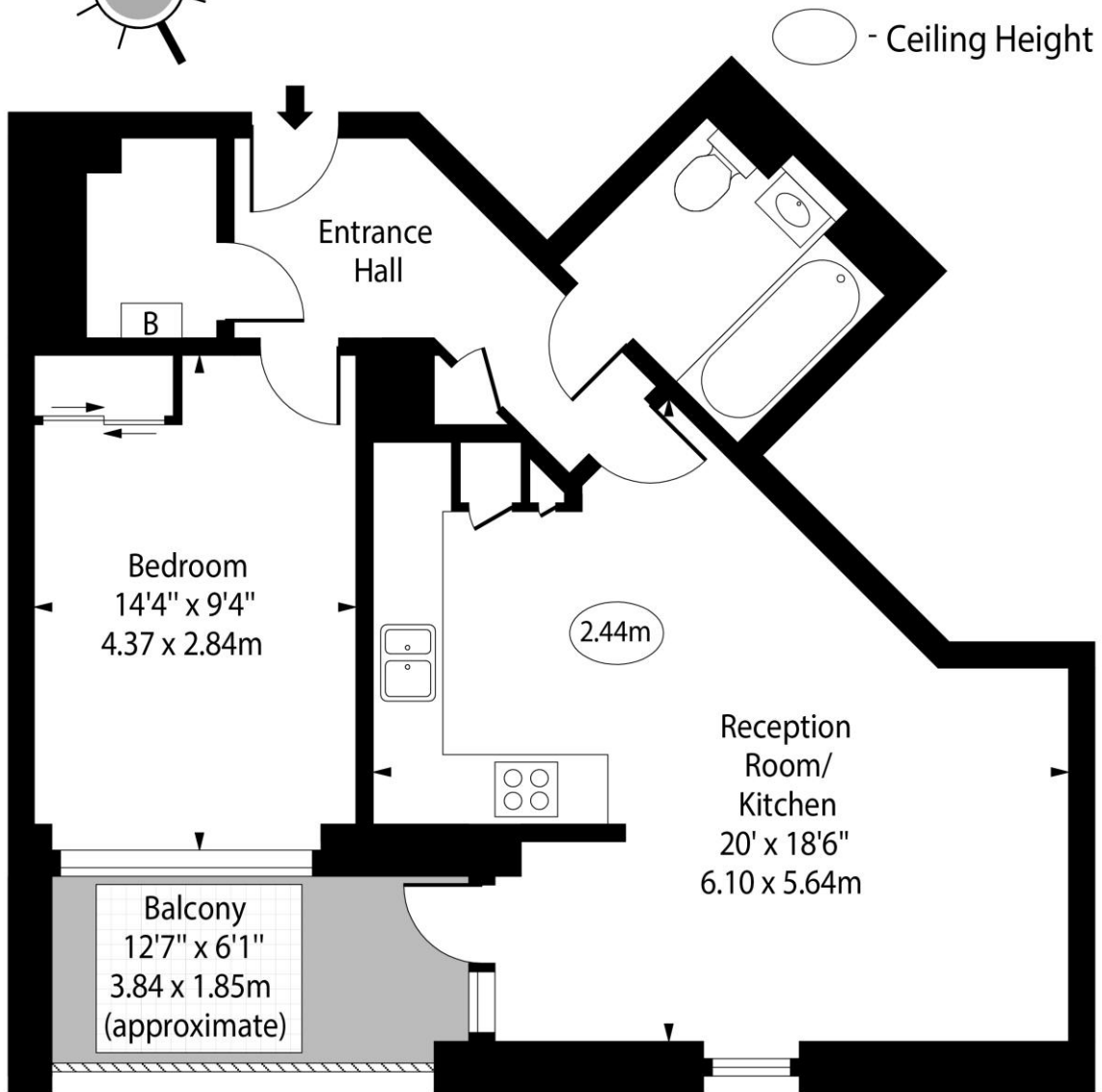
**Tenure:** Leasehold 238 years approx. remaining.  
**Service Charge:** £2,326 pa approx.  
**Ground Rent:** £200 The Ground rent doubles every 25 years  
**Local Authority:** Newham  
**Council Tax Band:** C

Energy Efficiency Rating		Current	Potential
Very energy efficient - lower running costs	A		
(91-101)	B	83	83
(81-90)	C		
(69-80)	D		
(55-68)	E		
(39-54)	F		
(21-38)	G		
Not energy efficient - higher running costs			
England, Scotland & Wales		EU Directive 2002/91/EC	

### Chestertons Canary Wharf & Greenwich Sales

Harbour Island  
 28 Harbour Exchange Square  
 London  
 E14 9GE  
 canarywharf@chestertons.co.uk  
 020 7510 8300  
 chestertons.co.uk

# Discovery Tower, Terry Spinks Place, E16



Fifth Floor

Approx Gross Internal Area      563 Sq Ft - 52.30 Sq M

For Illustration Purposes Only - Not To Scale

[www.goldlens.co.uk](http://www.goldlens.co.uk)

Ref. No. 020910K

