



Clarence House

CLARENCE HOUSE

Websters
estate agents

Park Road, Teddington, TW11 0AG

Historic 18th Century Grade II Listed 5 bedroom family home with stunning landscaped front and rear gardens and side driveway access to parking and the detached garage. Situated just 0.1 mile from Teddington town centre shops, cafes and restaurants, 0.2 miles from Teddington train station and 0.4 miles from Bushy Park.

Clarence House is available with no onward chain and offers beautifully maintained 2267 sq ft of well balanced living space over 3 floors with a gated entrance via the 69ft front garden, traditional style period decor and original features including cornicing, large sash windows, wood panelling, high ceilings and fireplaces.

Entrance hallway leads to the bay fronted living room, the study, storage and the dining room with original panelling and access into the kitchen. Doors open onto the stunning and secluded 82 ft rear garden with a large patio, lawn, mature planting, a w.c and gated side access with a driveway to the garage. On the first floor are 2 double bedrooms with built in storage and stairs up to the family bathroom, separate w.c and the 3 bedrooms on the second floor.

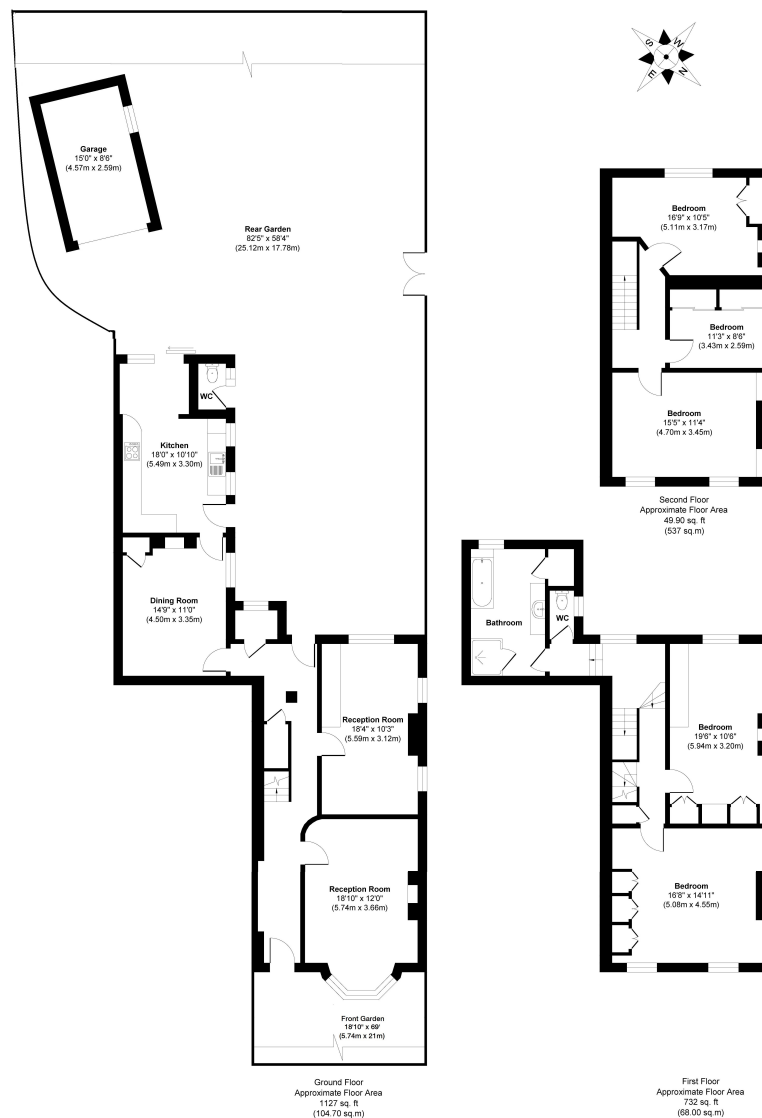
Located less than 0.3 miles from St Marys & St Peters Primary, within 0.9 miles of Collis, Sacred Heart, Stanley and Newlands House Schools and 0.8 miles from Teddington footbridge across the Thames to Ham Lands with a towpath along the river to Hampton Court and Richmond.

EPC Rating E

- Grade II Listed 18th Century Historic Home
- 2267 Sq Ft of Living Space over 3 Floors
- Large Landscaped Front and Rear Gardens
- Parking and Detached Garage
- No Onward Chain
- 2 Living Rooms, Dining Room and Kitchen
- 0.1 Mile from Teddington Town Centre
- Close to Numerous Popular Schools



Park Road, Teddington, TW11



Approx Internal Floor Area 2267sq ft/210.6 sqm
Garage 129sq ft/12 sqm

[a Websters Estate Agents 36 Broad Street, Teddington, Middlesex TW11 8QY](http://www.websters.co.uk)
 [t 020 8614 6000](tel:02086146000)
 [e sales@mywebsters.co.uk](mailto:sales@mywebsters.co.uk)
 [w mywebsters.co.uk](http://www.mywebsters.co.uk)

Disclaimer
 These particulars, whilst believed to be accurate are set out as a general outline only for guidance and do not constitute any part of an offer or contract. Intending purchasers should not rely on them as statements of representation of fact, but must satisfy themselves by inspection or otherwise as to their accuracy. We have not carried out a detailed survey nor tested the services, appliances and specific fittings. Room sizes should not be relied upon for carpets and furnishings. The measurements given are approximate. No person in this firm's employment has the authority to make or give any representation or warranty in respect of the property.

