

## High Street Wicklewood With Outstanding Primary School

Offers In Region Of £495,000

3 2 2



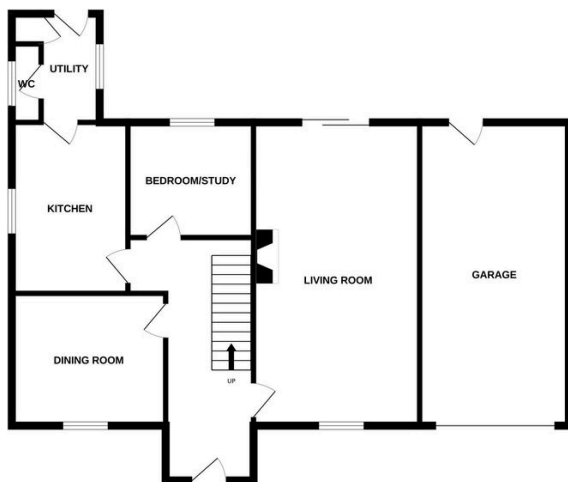
Moneyproperties are delighted to present this impressive detached four bedroom home, located in the highly sought-after village of Wicklewood, renowned for its outstanding local primary school and excellent links to Wymondham College. Beautifully presented throughout, the property offers approximately 1,800 sq ft of versatile living accommodation and occupies a generous plot measuring approximately 100ft x 50ft.

**Tenure: Freehold EPC: E Council Tax: D**

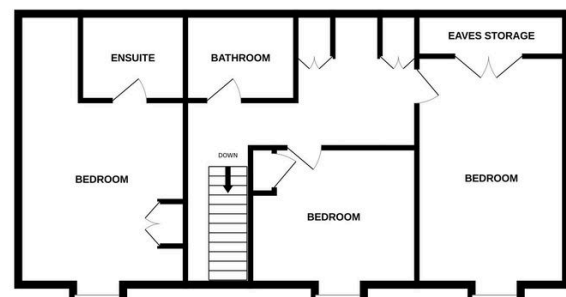
## Key Features

- Spacious detached four bedroom home, located in the highly sought-after village of Wicklewood
- Beautifully presented property and offers approximately 1,800 sq ft of versatile living accommodation
- shingle driveway provides parking for three to four vehicles and leads to a 23ft garage with electric door
- Wicklewood Primary School and Wymondham College, both boasting outstanding Ofsted reports
- Motivated sellers as found
- Renowned for its outstanding local primary school and excellent links to Wymondham College.
- A generous plot measuring approximately 100ft x 50ft with fully enclosed 40ft rear garden
- Newly fitted kitchen and Utility Room with contemporary sage green units and integrated appliances
- Wymondham offers a wide range of local shops, supermarkets, bus and rail services to Norwich and Cambridge
- See our full listing for further details including flood risk, broadband speed and other material information.

GROUND FLOOR



1ST FLOOR



Whilst every attempt has been made to ensure the accuracy of the floorplan contained here, measurements of doors, windows, rooms and any other items are approximate and no responsibility is taken for any error, omission or mis-statement. This plan is for illustrative purposes only and should be used as such by any prospective purchaser. The services, systems and appliances shown have not been tested and no guarantee as to their operability or efficiency can be given.  
Made with Metropix ©2026