

## View This Property!

Get in touch today on the contact details below and we'd be delighted to arrange a viewing of this property for you.

**W:** [hannells.co.uk](http://hannells.co.uk)  
**E:** [chaddesden@hannells.co.uk](mailto:chaddesden@hannells.co.uk)  
**T:** 01332 281400

Viewing Arrangements: Strictly by prior appointment with Hannells Estate Agents.

These particulars are intended only as a guide to the property. They do not form part of the contract and although they are believed to be correct, they may be inaccurate in important aspects.

### Viewing Strictly By Appointment Only

We recommend our preferred partner law firms who are solicitors selected by Us for their experience and efficiency in providing conveyancing services. We receive a referral fee of between £225 - £250 per completed transaction.

We recommend our preferred partner Mortgage intermediaries who are mortgage specialists available to provide you with the advice you need. We receive a referral fee of approximately £350 per completed transaction.

We recommend our preferred partner Insurance Company who provide Buildings and Contents Insurance. We receive a referral fee of approximately £25 per completed transaction.

We recommend our preferred partner Removal Company for home removals. We receive a referral fee of £50 per completed transaction.

You are NOT obliged to use our preferred partner services.

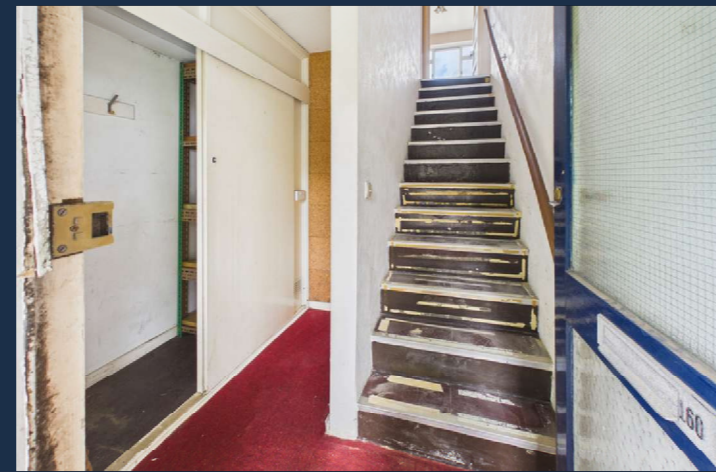
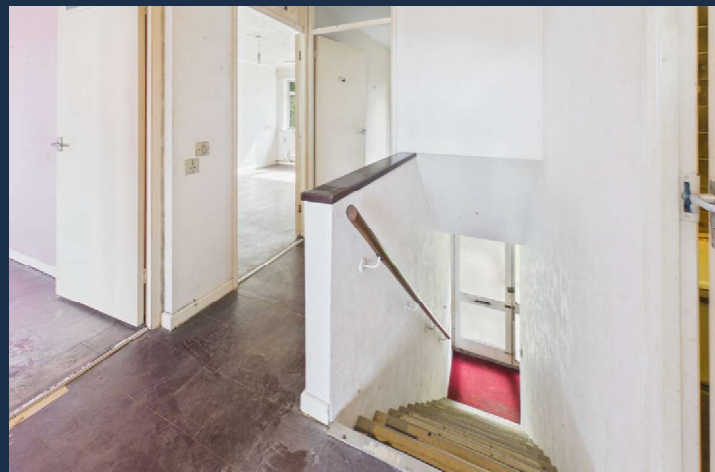
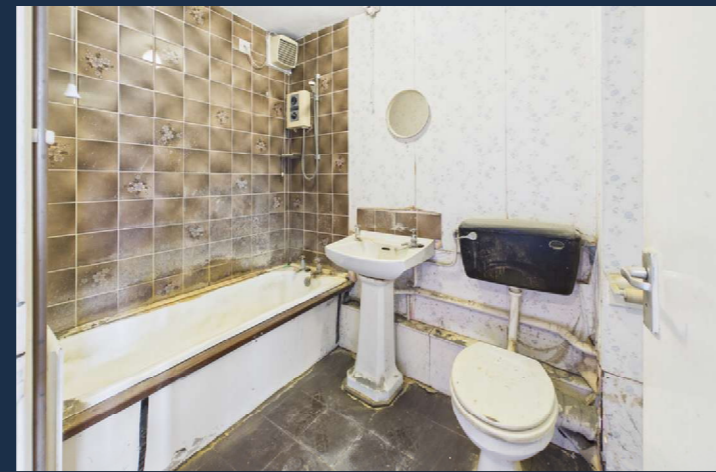
These particulars are intended to give a brief description of the property as a guide to prospective buyers. Accordingly, their accuracy is not guaranteed and Hannells Ltd nor the vendors accept any liability of their contents. They do not constitute an offer for sale. Any prospective purchasers should satisfy themselves by inspection or otherwise as to the correctness of any statements or information in these particulars. Please refer to the Agents if you require further clarification of information. The Property Misdescription Act 1991 - The Agent has not tested any apparatus, equipment, fixtures and fittings or services and so cannot verify that they are in working order or fit for the purpose. A buyer is advised to obtain verification from their Solicitor or Surveyor. References to the Tenure of the Property are based on information supplied by the Seller. The agent has not had sight of the title documents. A buyer is advised to obtain verification from their Solicitor.

### Church Street, Spondon, DE21 7LL | Leasehold

Offered for sale with no upward chain, this two-bedroom first-floor apartment presents an excellent opportunity for purchasers seeking a property to modernise and personalise to their own taste. Requiring a programme of updating and improvement, the apartment offers well-proportioned accommodation and significant potential.

- First Floor Apartment Requiring A Scheme Of Modernisation/Improvement
- Established Location Within The Heart of Spondon
- EPC Rating C, Standard Construction
- Council Tax Band A, Leasehold





Leasehold

A Moving Experience...



**Full Description:**

Offered for sale with no upward chain, this two-Situated in the heart of Spondon, the property is conveniently located for a wide range of local amenities, shops, and transport links, making it an ideal purchase for first-time buyers, investors, or those looking to downsize. An early viewing is recommended to appreciate the potential on offer.

In brief the accommodation comprises:- entrance lobby with staircase to first floor landing, dining kitchen, lounge, two bedrooms and bathroom with three piece suite.

Outside, there are communal gardens.

The property is set back from Church Street and is well situated for Spondon village and its amenities together with excellent road links for the A52, M1 motorway, A50 and Nottingham East Midlands Airport.

**Room Measurements & Details:**

**Ground Floor Entrance:** (7'2" x 5'9") 2.18 x 1.75

**First Floor Landing:** (7'3" x 6'6") 2.21 x 1.98

**Living Room:** (14'8" x 10'1") 4.47 x 3.07

**Kitchen:** (8'7" x 10'0") 2.62 x 3.05

**Bedroom One:** (12'0" x 9'9") 3.66 x 2.97

**Bedroom Two:** (10'6" x 11'10") 3.20 x 3.61

**Bathroom:** (7'5" x 5'3") 2.26 x 1.60

**Outside:**

There are communal gardens to both front and rear elevations.

**Leasehold Information:**

Leasehold start date 6th June 1983 with a 125 year lease. Ground Rent is £10 per annum. Service Charge TBC. (Your legal representative should verify this)

**Buyer Information:**

1. Anti-Money Laundering (AML) Regulations: We are legally required to verify all purchasers. The cost is £24 (inc VAT) per person.

2. General: These sales particulars are intended as a general guide only. If any detail is especially important, please contact us—particularly if you're travelling a long distance to view.

3. Measurements: All measurements are approximate and provided for guidance only.

4. Services: Services, equipment, and appliances have not been tested. Buyers should arrange their own surveys or inspections.

5. These details are given in good faith but do not form part of any offer or contract. Information should be independently verified. Hannells Limited and its employees or agents are not authorised to make representations or warranties regarding the property.