



Belmont Street | | London | NW1 8HH

£10,500 Per month

ESON2
REAL ESTATE

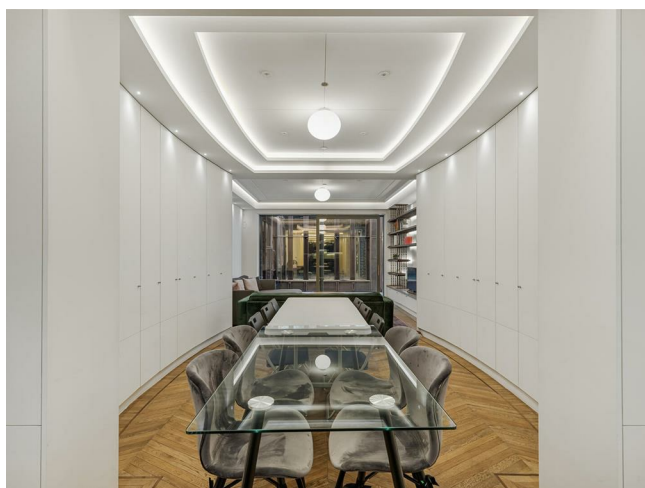
Key features

- Wooden floor
- Natural light
- 4 bedrooms
- Elegant interiors throughout
- Bright living area
- Quiet Belmont Street location
- Well-connected transport links
- Detached modern house

Description

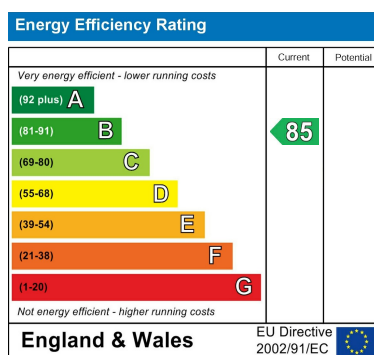
Stylish 5-bedroom apartment with ensuite baths, wooden flooring, and elegant interiors. Bright living area, spot sofa corners, and great natural light. Set on quiet, well-connected Belmont Street-ideal for families or professionals.

Directions



A beautifully appointed five-bedroom apartment arranged over multiple levels, offering exceptional space and refined contemporary interiors. Each bedroom benefits from a private ensuite, providing both comfort and discretion.





Council Tax Band EPC Rating **B**



301 Michelin House 81 Fulham road
London
Greater London
SW3 6RD
07920 257649
fayeel@eson2.co.uk
www.eson2.co.uk