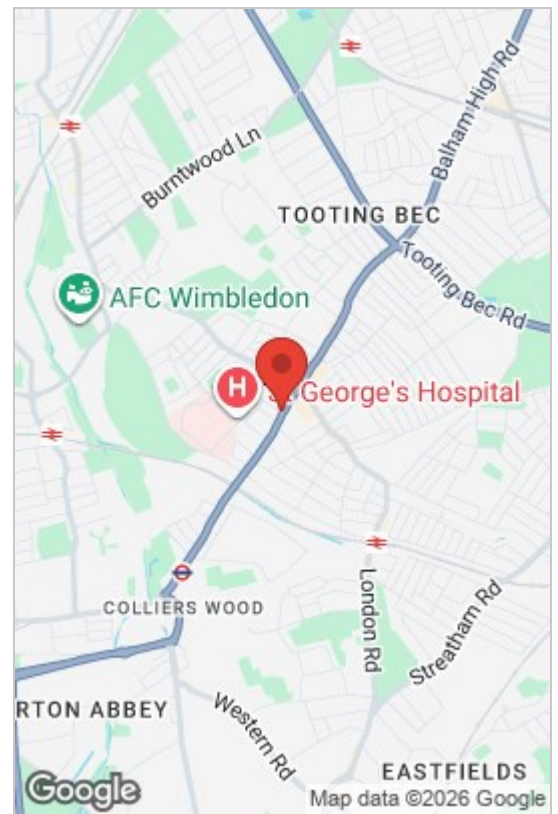
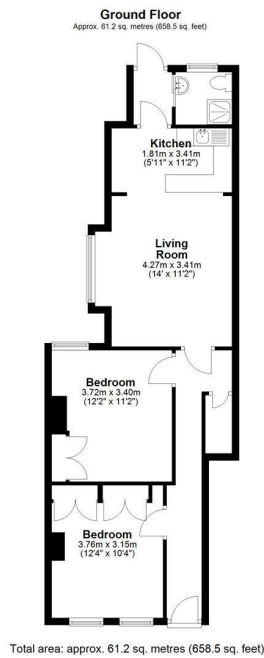




Coverton Road *, SW17 0QW
£400,000

 2  1  1  C





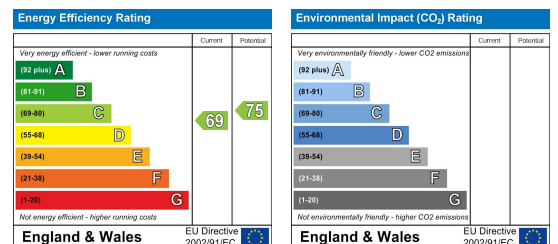
- 2 Double Bedrooms
- Ground Floor
- Double Glazed throughout
- Gas central heating
- Prime Location
- Open plan Kitchen/Living area
- South facing rear garden
- Wandsworth Borough



We are pleased to offer this 2 double bedroom maisonette to the market. Situated very close to Tooting Broadway this an excellent location with multiple shops, bars, restaurants and transport links, including Northern Line Tube Station within a short walk. The maisonette has double glazing throughout, gas central heating and a south facing garden, but would benefit from further updating. No Chain.



Council Tax Band: C



These particulars, whilst believed to be accurate are set out as a general outline only for guidance and do not constitute any part of an offer or contract. Intending purchasers should not rely on them as statements of representation of fact, but must satisfy themselves by inspection or otherwise as to their accuracy. No person in this firm's employment has the authority to make or give any representation or warranty in respect of the property.