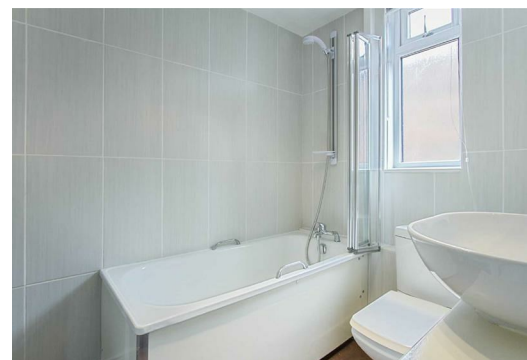


# TATES

020 7602 6020



## More Close, St Paul's Court, London W14 9BN

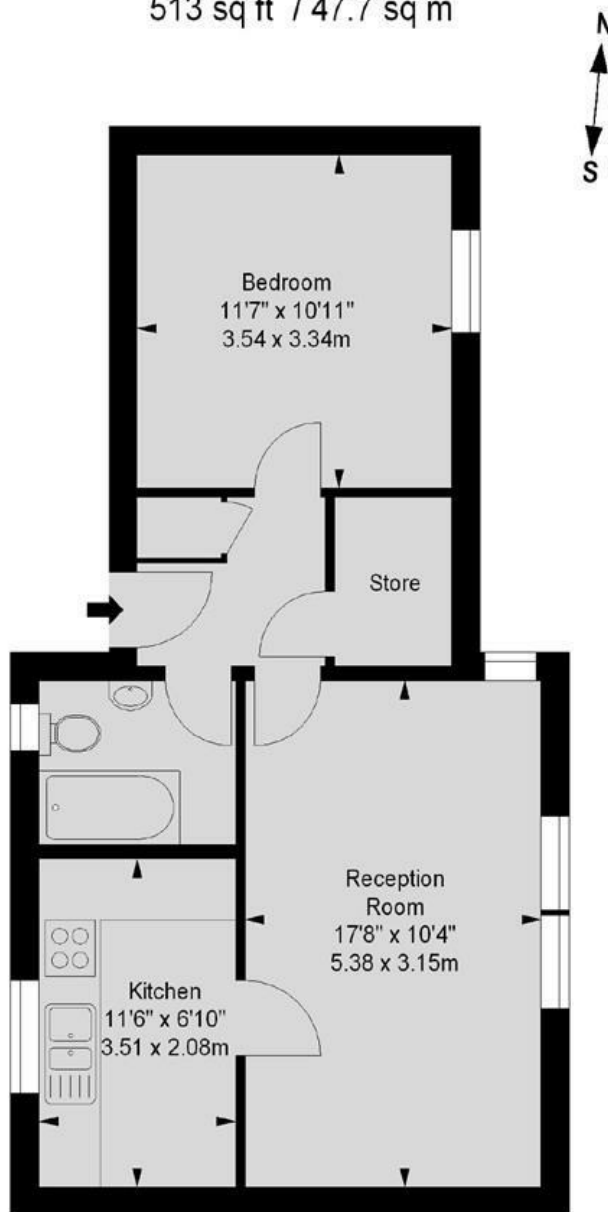
**£2,095 Per month**

- One Bedroom Apartment
- Available End Of December
- Close to Barons Court Tube Station
- Inclusive Of Heating & Hot Water
- Gated Development
- Communal Garden
- Furnished
- Energy Efficiency Rating Current Band: C

# More Close, W14

Approximate gross internal area

513 sq ft / 47.7 sq m

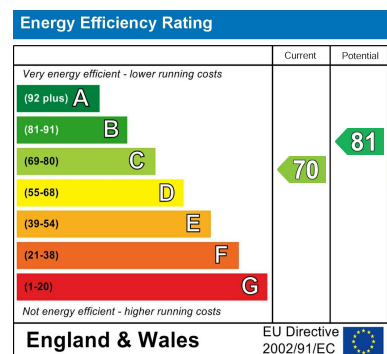


First Floor

Illustration For Identification Purposes Only. Not To Scale

\*Floorplan Drawn According To RICS Guidelines

Whilst these particulars are produced in good faith and are believed to be correct, no guarantee is given, nor any responsibility accepted, by Tates nor by any of its representatives, for their accuracy. The particulars do not constitute part of any offer or contract, and it is recommended that such things as measurements, condition, structure, services, appliances, fixtures and fittings and facilities are all independently assessed by the prospective purchaser or renter of the subject property prior to committing to any contract.



135 Hammersmith Road, West Kensington, London W14 0QL

mail@tatesestates.co.uk

tatesestates.co.uk

Tates (Agents) Ltd. Registered in England and Wales No. 02356337

Registered Office: Imperial House, 8 Keane Street, London WC2B 4AS

