



The Willows, Highworth, SN6 7PH

£550,000  
(Subject to Contract)

*Hanley's*

# The Willows Highworth SN6 7PH

An extended five-bedroom detached house situated in a sought-after location with far reaching views to the front. Within a short walk of the High Street, the well presented property offers spacious accommodation which comprises: Entrance hall with fitted storage, cloakroom, living room with open fireplace leading to the family room with patio doors opening onto the rear garden. A superb kitchen/dining room gives access to the garden via patio doors with further door to the double garage with utility area. To the first floor are five generous bedrooms; four with built-in wardrobes and the fifth currently arranged as a study alongside an en-suite bathroom, a family bathroom, and a separate shower room. Further benefits include gas-fired radiator central heating and double glazing. Outside, the south-facing landscaped rear garden provides a perfect space for entertaining with large patio, steps to an area laid to lawn with an established shrub border, fruit trees and blackberry bush, while a tucked-away secret garden features an attractive stone wall. Gated side access leads to the front of the property, where a block-paved driveway offers parking for several vehicles and gives entry to the double garage.



**3 Bathrooms**



**5 Bedrooms**



**3 Receptions**

**EPC: D 66**

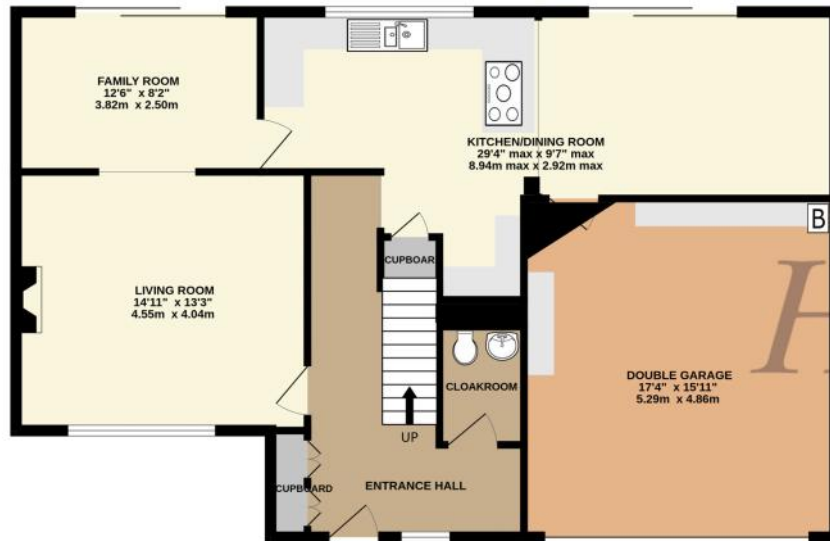
**Council Tax Band: F**

**Tenure: Freehold**



DISCLAIMER. These particulars, whilst believed to be accurate are set out as a general outline for guidance and do not constitute any part of an offer or contract. Intending purchasers should not rely on them as statements or representation of fact, but must satisfy themselves by inspection or otherwise as to their accuracy. No person in this firm's employment has the authority to make or give any representation or warranty in respect of the property. Floor plan measurements and distances are approximate only. We have not carried out a detailed survey nor tested the services, appliances or specific fittings. Your home is at risk if you do not keep up repayments on a mortgage or other loan secured on it.

GROUND FLOOR  
1043 sq.ft. (96.9 sq.m.) approx.



1ST FLOOR  
900 sq.ft. (83.6 sq.m.) approx.

