



Clifton Gardens

London, W9

£2,950 per month
(£680.77 per week)

A spacious and modern two bedroom second floor flat in a sought after White stucco set in the heart of Little Venice. The property benefits from wooden flooring, a lift and a private terrace.

CHESTERTONS



Clifton Gardens

London, W9

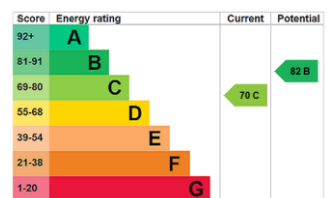
- White Stucco fronted building
- Two bedrooms
- One Bathroom
- Private terrace
- Lift
- EPC Rating C



A spacious, modern two bedroom second floor flat in a sought after White stucco set in the heart of Little Venice. The property benefits; two double bedrooms wooden floors, separate kitchen, newly refurbished bathroom, spacious accommodation with an abundance of natural light and a private balcony.

Clifton Gardens is ideally situated moments away from all the amenities of Little Venice and close to excellent transport links including Warwick Avenue underground station and the Elizabeth Line from Paddington station.

Minimum Term: 12 months
Deposit Required: 5 weeks
Local Authority: City of Westminster
Council Tax Band: F
EPC Rating: C
Furnished



Chestertons Little Venice Lettings

26 Clifton Road
Maida Vale
London
W9 1SX
littlevenicelettingsusers@chestertons.co.uk
02072662369
chestertons.co.uk

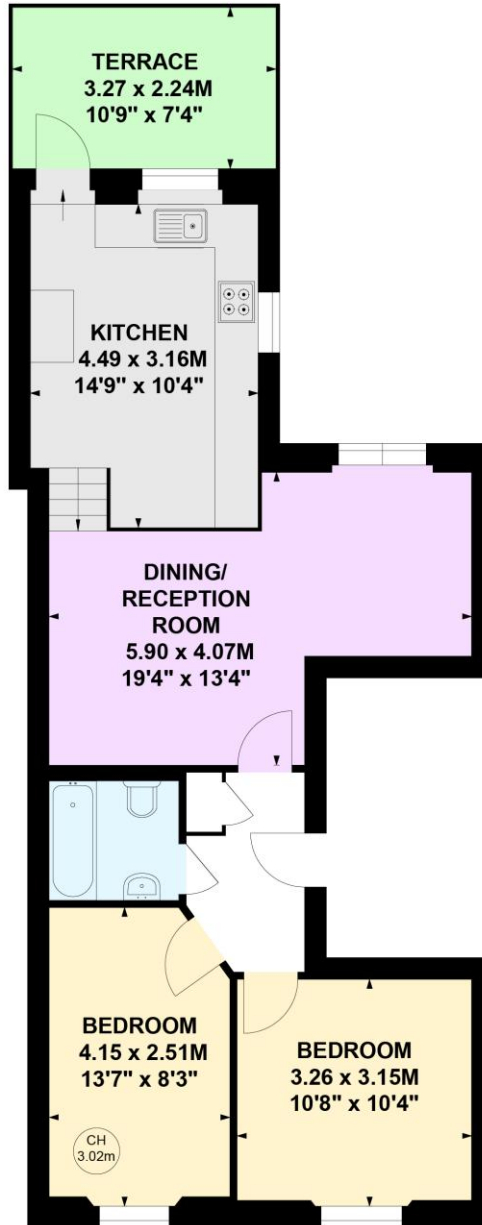
Additional tenant charges apply (fees apply to non-AST tenancies only)
Tenancy Agreement Fee: £300
References per Tenant/Guarantor: £60
Inventory check (approx. £100 – £250 inc. VAT)
chestertons.co.uk/property-to-rent/applicable-fees

Clifton Gardens, W9

Approximate gross internal area

64.41 sq m / 693 sq ft

Key :
CH - Ceiling Height



Second Floor

This plan is not to scale and must be used as layout guidance only. All measurements and areas are approximate and should not be relied upon to provide accurate information. This plan must not be relied upon when making property valuations, design considerations or any other such relevant decisions. We accept no responsibility or liability (whether in contract, tort or otherwise) in relation to any loss whatsoever arising from or in connection with any use of this plan or the adequacy, accuracy or completeness of it or any information within it.

