



Springfield Drive
Stoke On Trent



£1,250 PCM



alsagerlettings@stephensonbrowne.co.uk

15 Crewe Road
Alsager
Stoke-On-Trent
Staffordshire
ST7 2EM

f StephensonBrowneAlsager



t @sbalsager

14 Springfield Drive Stoke On Trent

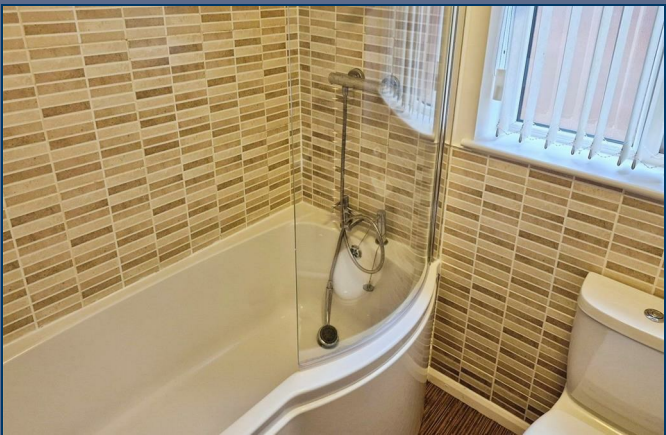
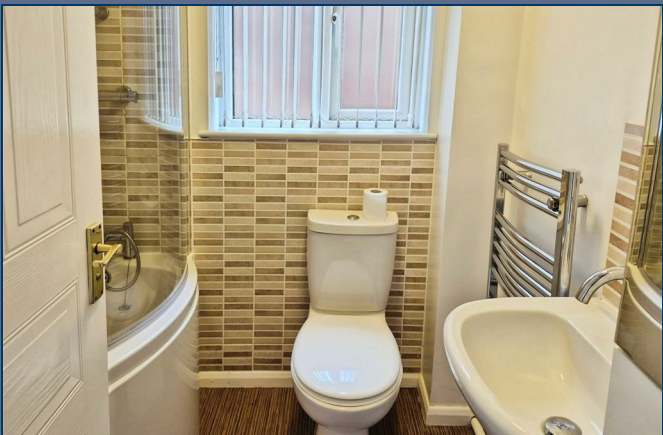
ST7 1BL

A superb four bedroomed extended detached house. Freshly decorated with some brand new carpets. This property offers excellent living space with a substantial extension to the rear overlooking the garden with open outlook. A second reception room provides a separate living space which would make a great games room/gym/study. Generous hallway with ground floor WC, attractive kitchen plus separate Utility room. To the first floor are two double bedrooms, ensuite to master bedroom, and two large single bedrooms. Three of the bedrooms have wardrobes. There is a main family bathroom with shower over bath. The front of the property offers a generous space for parking and the rear provides a large shed, two level patio area and a raised lawn. Ground floor w/c. Sorry no cats or dogs due to Landlord sever allergies.

£1,250 PCM



Important Notice





Stephenson Browne Estate Agents

Newcastle
56 Merrial Street, Newcastle under Lyme
Staffordshire, ST5 2AJ
Tel: 01782 625734

Sandbach
38 High Street, Sandbach
Cheshire, CW11 1AN
Tel: 01270 763200

Alsager
13 Crewe Road, Alsager
Stoke on Trent, ST7 2EW
Tel: 01270 883130

NOT TO SCALE These floor plans are given as a guide only. Full completed measurements and details should be verified by any intending purchasers legal representative.

NOTICE: Stephenson Browne for themselves and for the vendors or lessors of this property whose agents they are give notice that: (1) the particulars are set out as a general guideline only for the guidance of intending purchasers or lessees, and do not constitute, nor constitute part of, an offer or contract; (2) all descriptions, dimensions, references to condition and necessary permissions for use and occupation, and other details are given in good faith and are believed to be correct but any intending purchasers or tenants should not rely on them as statements or representations of fact but must satisfy themselves by inspection or otherwise as to the correctness of each theme; (3) no person in the employment of Stephenson Browne has any authority to make representation or warranty whatever in relation to this property. (4) fixtures & fittings are subject to a formal list supplied by the vendors solicitors.