



Garden Road, TW9

£1,650 Per calendar month

A stunning top floor purpose built apartment laid out over approximately 505 sq ft of accommodation. The property successfully combines a modern and contemporary interior whilst offering an abundance of natural light.

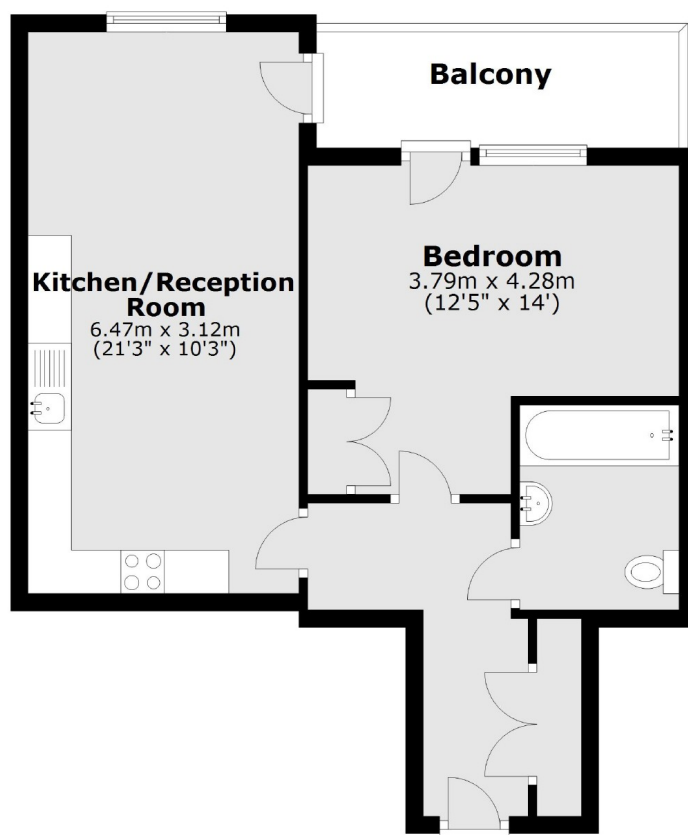
Garden Road provides great access to the town centre of Richmond where a plethora of fine restaurants and eateries can be found amongst a vast array of shops, outstanding transport links, the River Thames, Richmond Green and Richmond Park, whilst also being conveniently situated beside the Royal Botanic Gardens, Kew and the Old Deer Park area.

Features

- One Double Bedroom
- Open Plan Kitchen
- Modern Bathroom
- Communal Gardens
- South Facing Private Balcony
- Wooden Floors

Garden Road, Richmond, TW9

Fourth Floor



Main area: Approx. 47.0 sq. metres (505.5 sq. feet)
Plus balconies, approx. 6.1 sq. metres (66.1 sq. feet)