

BRENNAN

BESPOKE

£300,000

Venus Avenue

Kettering, NN15 4BF

PROPERTY SUMMARY

This three bedroom semi detached home on Venus Avenue is on the popular Hanwood Park development. Modern throughout and designed for practical day-to-day living, the property offers a comfortable layout that suits first-time buyers, young families or investors, with well-balanced accommodation across both floors. The ground floor includes a welcoming hallway, a lounge that provides a cosy main reception space, and a kitchen/dining area that works as the hub of the home for cooking and entertaining, supported by useful storage and a convenient cloakroom. Upstairs, there are three bedrooms in total, including a principal bedroom with en-suite, along with a family bathroom serving the remaining rooms, offering flexible space for family life, guests or home working. Externally, the property benefits from a side driveway providing off-road parking, while the rear garden is private and easy to maintain with a patio area for outdoor seating and dining and a lawn for relaxing or children's play, making it a great option for those wanting a modern home with practical outside space in a sought-after Barton Seagrave location.

3



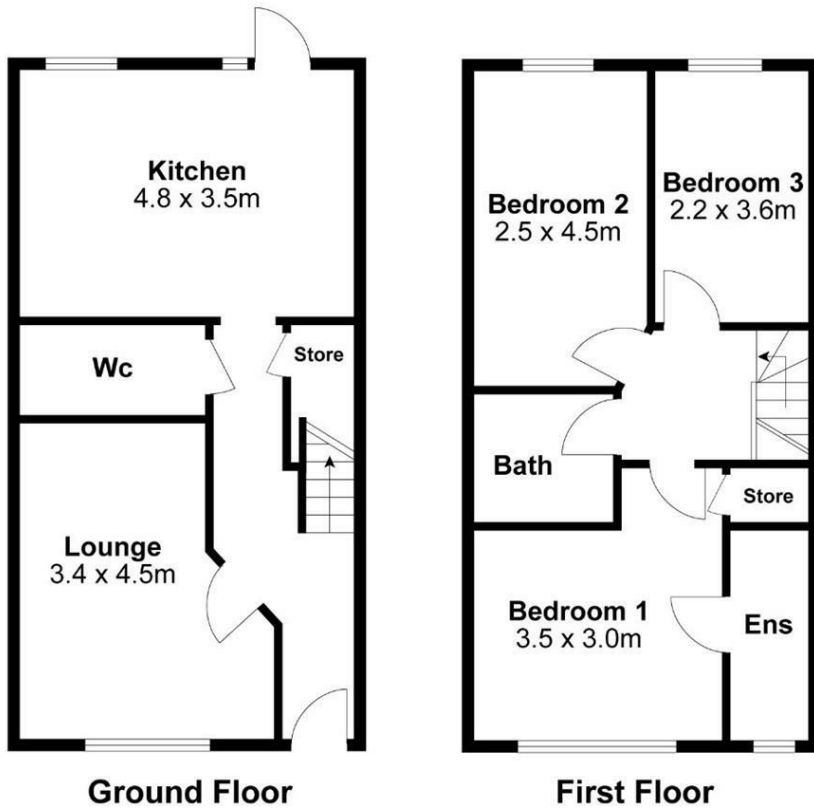
2



1







For identification only not to scale

Internal Area Approx. : 91m²

BRENNAN
BESPOKE

LOCAL AUTHORITY
North Northamptonshire

TENURE
Freehold

COUNCIL TAX BAND
C

VIEWINGS
By prior appointment only

Energy Efficiency Rating		Current	Potential
<i>Very energy efficient - lower running costs</i>			
(92 plus) A			95
(81-91) B		85	
(69-80) C			
(55-68) D			
(39-54) E			
(21-38) F			
(1-20) G			
<i>Not energy efficient - higher running costs</i>			
England & Wales		EU Directive 2002/91/EC	

Agents Note: Whilst every care has been taken to prepare these particulars, they are for guidance purposes only. All measurements are approximate and are for general guidance purposes only and whilst every care has been taken to ensure their accuracy, they should not be relied upon and potential buyers/tenants are advised to recheck the measurements

BRENNAN
BESPOKE

OFFICE ADDRESS
BRENNAN BESPOKE
2 The Tithe Barn Glendon Lodge Farm
Glendon
Kettering
Northamptonshire
NN14 1QF

OFFICE DETAILS
01536 904400
info@brennanbespoke.co.uk
<https://www.brennanbespoke.co.uk>