



Allan Morris
estate agents

 **MAYFAIR**
OFFICE GROUP

25 Kings End Road, Powick, Worcester. WR2 4RB

Guide Price £600,000

🛏️ 4 🚿 1 🚗 2



A modern detached four bedroom bungalow, offering immaculately presented and very well maintained accommodation, situated in a quiet cul-de-sac on the edge of this popular village. The location provides easy access to Malvern, Worcester, national road and rail networks.

Accommodation briefly comprises: Reception Hall, Lounge, separate Dining Room, Kitchen, Utility Room, Study/Bedroom 4 (with En-Suite W.C.), three double Bedrooms and a refitted Bathroom.

Outside: To the front of the property is a lawned foregarden, with mature shrub beds and borders, a mono block driveway providing off road parking, in turn leading to the front door, a double Garage (with electric up and over door, power, light and courtesy door to Reception Hall) and a gated side/rear pedestrian access. To the rear of the property is a generous mature garden, predominantly laid to lawn with shrub borders, a large paved patio area, outside cold water tap, outside courtesy lights, garden store room (brick), natural stream/pond and a private southerly aspect.

Kitchen - 3.77m x 3.67m (12'4" x 12'0")

Dining Room - 4.1m x 2.87m (13'5" x 9'4")

Lounge - 4.1m x 5.04m (13'5" x 16'6")

Bedroom 1 - 4.1m x 3.63m (13'5" x 11'10")

Bedroom 2 - 3.77m x 3.63m (12'4" x 11'10")

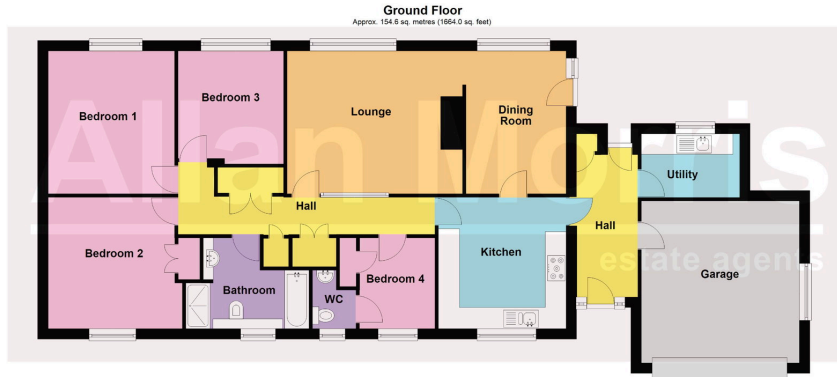
Bedroom 3 - 3.25m x 3.03m (10'7" x 9'11")

Bedroom 4 - 2.61m x 2.74m (8'6" x 8'11")

Bathroom - 2.61m x 3.54m (8'6" x 11'7")

Garage - 4.65m x 4.54m (15'3" x 14'11")





Total area: approx. 154.6 sq. metres (1664.0 sq. feet)

DISCLAIMER: Floor plans shown are for general guidance only. Whilst every attempt has been made to ensure that the floorplan measurements are as accurate as possible, they are for illustrative purposes only.

- NO ONWARD CHAIN
- 4 Bedrooms
- Generous mature private gardens
- Gas central heating & UPVC double glazing
- Council Tax Band: E
- 2 Reception Rooms
- Private southerly rear aspect
- Quiet village location
- Viewing highly recommended

