



Bakehouse Close, Benwick March  
**Offers in Excess of £425,000 Freehold**

**Sharman  
Quinney**

# Key Features



- Private Rear Enclosed Garden
- Village Location
- Generous 19 Foot DUAL ASPECT Lounge with OPEN FIRE
- STUNNING Kitchen with Island and Breakfast Bar
- Large Driveway Providing Parking for Multiple Cars

## Description

### Ground Floor

Entrance Hall  
Leading to;

### Lounge

Dual aspect windows to front and rear, featured open fire and French Doors leading to the Garden.

### Kitchen/Breakfast Room

Fitted with a matching range of base and eye-level units, separate Island, window to front and leading to;

### Utility Room

Side door providing access to the Garden.



## Dining Room

Fitted units with window to rear.

## Cloakroom

Fitted with a two-piece suite, and comprising of a wash hand basin, low-level-WC and window to rear.

## First Floor

## Master Bedroom

Fitted wardrobes with window to front and leading to;

## En-Suite

Fitted with a three-piece suite and comprising of; a double shower cubicle, wash hand basin, low-level-WC and window to side.

## Bedroom 2

Window to rear

## Bedroom 3

Window to front.

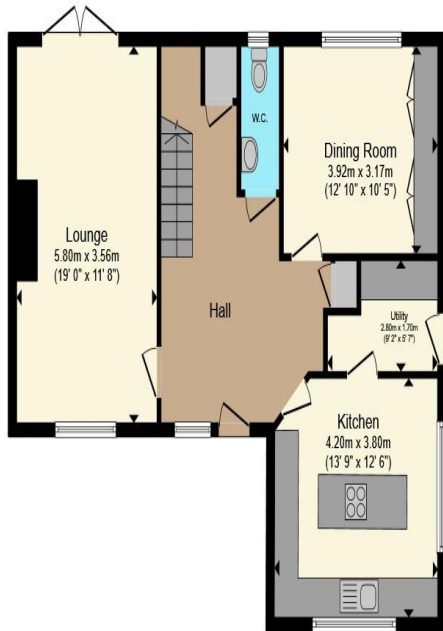
## Family Bathroom

Fitted with a three-piece suite and comprising of a bath with overhead shower, wash hand basin, low-level-WC and window to rear.

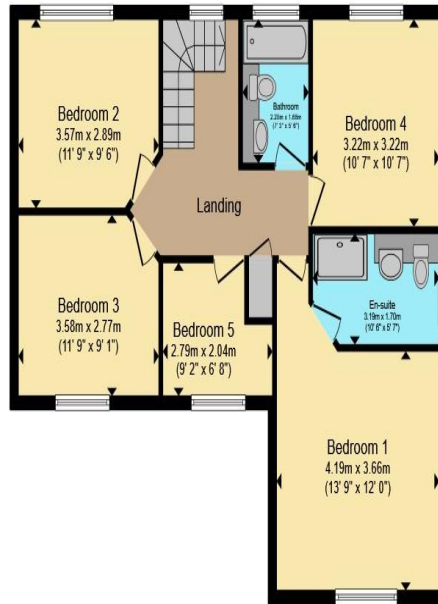
## Bedroom 4

Window to rear

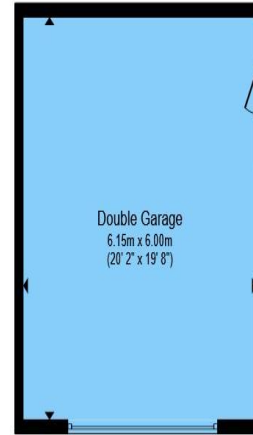




**Ground Floor**



**First Floor**



**Garage**

Total floor area 184.5 m<sup>2</sup> (1,986 sq.ft.) approx

This floor plan is for illustrative purposes only. It is not drawn to scale. Any measurements, floor areas (including any total floor area), openings and orientation are approximate. No details are guaranteed, they cannot be relied upon for any purpose and they do not form part of any agreement. No liability is taken for any error, omission or misstatement. A party must rely upon its own inspection(s). Powered by [www.propertybox.io](http://www.propertybox.io)

**Sharman  
Quinney**

**Bedroom 5/ Study**  
Multifunctional room with window to front.

**Outside**  
The front of the property offers a spacious driveway provides vast parking for multiple cars.

The private rear enclosed garden offers a seated patio area with laid lawn to rear and an additional paved seating area with Pergola.

**Double Garage**  
Electric up and over door, lighting, power window to side and side door for access.

To view this property call Sharman Quinney on:  
**01487 710345**

# Selling your property?

Contact us to arrange a **FREE** home valuation.

 01487 710345

 17 Great Whyte, Ramsey, HUNTINGDON,  
Cambridgeshire, PE26 1HG

 ramsey@sharmanquinney.co.uk

 [www.sharmanquinney.co.uk](http://www.sharmanquinney.co.uk)



 SCAN ME



Sharman Quinney Holdings Limited is registered in England and Wales under company number 4174227, Registered Office is Cumbria House, 16-20 Hockliffe Street, Leighton Buzzard, Bedfordshire, LU7 1GN. VAT Registration Number is 500 2481 05.

1: These particulars do not constitute part or all of an offer or contract. 2: The measurements indicated are supplied for guidance only and as such must be considered incorrect. 3: Potential buyers are advised to recheck the measurements before committing to any expense. 4: Sharman Quinney has not tested any apparatus, equipment, fixtures, fittings or services and it is the buyers interests to check the working condition of any appliances. 5: Sharman Quinney has not sought to verify the legal title of the property and buyers must obtain verification from their legal representative. 6: Intending purchasers will be asked to produce identification documentation at a later stage and we would ask your co-operation in order that there will be no delay in agreeing the sale. Ref: RAM204775 - 0001

