



Chelsea Manor Street
Chelsea, SW3

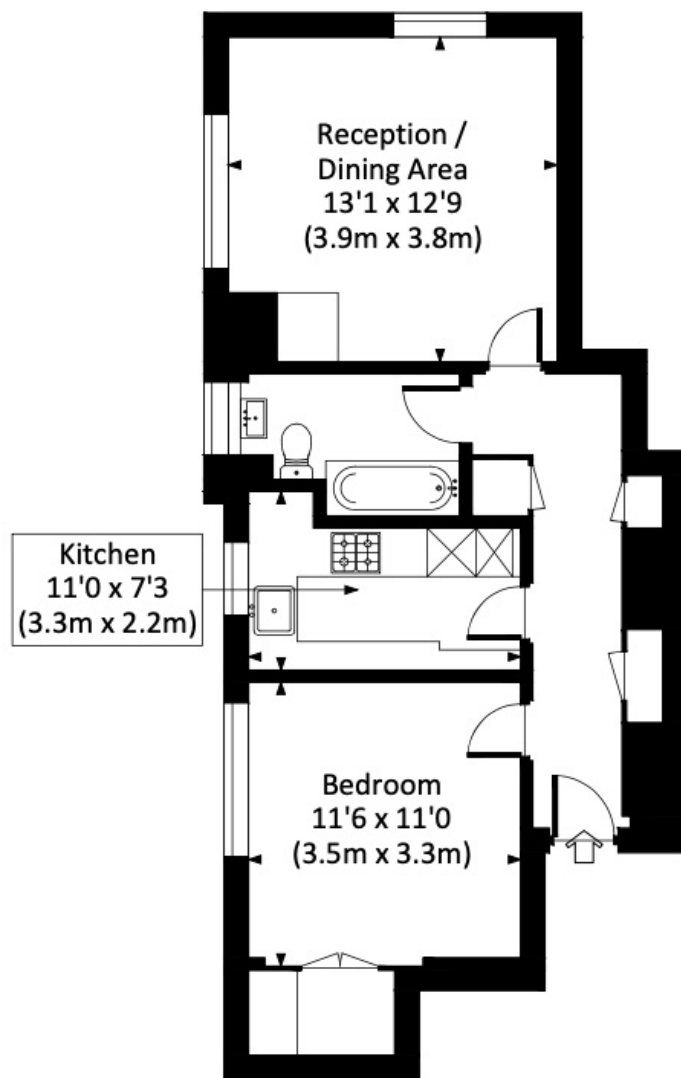
 Maskells

A superb 1 bedroom flat of excellent proportions and in beautiful condition throughout (newly redecorated), situated on the 6th floor (with lift) of a popular secure portered building just off the King's Road and only a short walk to Sloane Square and the 200 acre Battersea Park. EPC D.



- Large newly redecorated 1 bedroom apartment
- 6th floor (with lift) with lovely views towards the river
- Secure portered building
- Superb reception room with double aspect
- Excellent storage with walk-in wardrobe
- Well appointed galley style kitchen
- Over 550 Sq ft (51 Sq m) of internal space
- Just off the King's Road and only 0.6 miles to Sloane Square
- 0.5 miles to Battersea Park
- A short stroll - 0.6 miles - to South Kensington tube





Sixth Floor

APPROXIMATE FLOOR AREA

51.4 sq m / 553 sq ft

TERMS

Asking Price £576 Per Week (£2,496 PCM)

FURNISHED

EPC D

Council Tax Band E

Local Authority Royal Borough of Kensington and Chelsea



@maskellsea

Maskells

71 Walton Street, London SW3 2HT

Tel: 0207 581 2216

sales@maskells.com

lettings@maskells.com

[maskells.com](https://www.maskells.com)

