



## 185 St. Margarets Road

Plympton, Plymouth, PL7 4RG

£240,000



Situated in the popular Woodford area is this Stanbury-built family home being offered with no onward chain, briefly comprising an entrance porch & hallway, lounge, separate dining room & kitchen, with 3 generous bedrooms, bathroom & separate wc. There is a shared driveway leading to a garage, with low-maintenance gardens to the front & rear. The property is close to local primary & secondary schools.



**ST MARGARETS ROAD, PLYMPTON, PLYMOUTH PL7 4RG**

**ACCOMMODATION**

Obscured uPVC double-glazed door opening into the entrance porch.

**ENTRANCE PORCH 8'1" x 2'7" (2.48 x 0.79)**

uPVC double-glazed windows to the front elevation. Obscured uPVC double-glazed door opening into the entrance hall.

**ENTRANCE HALL 13'9" x 5'11" (4.21 x 1.82)**

Doors leading to the lounge, dining room and kitchen. Stairs ascending to the first floor landing with storage cupboards beneath. uPVC double-glazed window to the side elevation.

**LOUNGE 13'6" x 12'4" (4.14 x 3.76)**

Inset electric heater with wooden panelled surround. uPVC double-glazed bay window to the front elevation.

**DINING ROOM 12'7" x 10'7" (3.85 x 3.25)**

Inset electric heater with marble-effect hearth and surround with wooden mantel over. uPVC double-glazed window to the rear elevation.

**KITCHEN 9'5" x 7'6" (2.88 x 2.29)**

Matching base and wall-mounted units incorporating a roll-edged laminate worktop with inset stainless-steel sink. Spaces for a washing machine, cooker and fridge/freezer. Obscured uPVC double-glazed door opening to the rear garden. uPVC double-glazed window to the side elevation.

**FIRST FLOR LANDING 10'9" x 6'11" (3.30 x 2.12)**

Doors providing access to the first floor accommodation. Drop-down loft access hatch. uPVC double-glazed window to the side elevation.

**BEDROOM ONE 13'6" x 11'5" (4.13 x 3.50)**

Built-in double wardrobe. uPVC double-glazed window to the front elevation.

**BEDROOM TWO 12'7" x 11'5" (3.86 x 3.48)**

Built-in double wardrobe. uPVC double-glazed window to the rear elevation.

**BEDROOM THREE 9'11" x 6'11" (3.04 x 2.12)**

uPVC double-glazed window to the front elevation.

**BATHROOM 6'11" x 5'1" (2.11 x 1.55)**

Fully-tiled and fitted with a panelled bath and handbasin set onto a storage unit. Obscured uPVC double-glazed window to the side elevation.

**SEPARATE WC 3'10" x 2'6" (1.17 x 0.77)**

Close-coupled wc. Obscured uPVC double-glazed window to the side elevation.

**GARAGE 16'9" x 18'9" (5.13 x 5.74)**

Up-&-over door. Wooden-framed single-glazed window to the rear.

**OUTSIDE**

The property is approached via a shared driveway which leads to the garage with a slabbed walkway leading to the front door, bordered by an area of stone chippings. A gate to the side provides access to the rear garden which has a sunny aspect and is laid for ease-of-maintenance with patio and stone chippings bordered by raised flower beds.

**COUNCIL TAX**

Plymouth City Council  
Council Tax Band: C

**PLYMPTON SERVICES**

The property is connected to mains electricity, water and drainage.

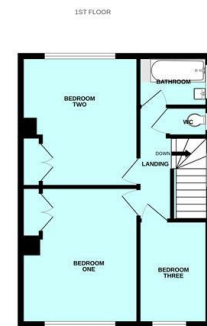
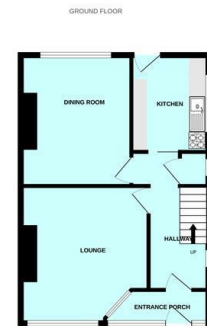
**WHAT3WORDS**

///knots.leader.hoot

**Area Map**

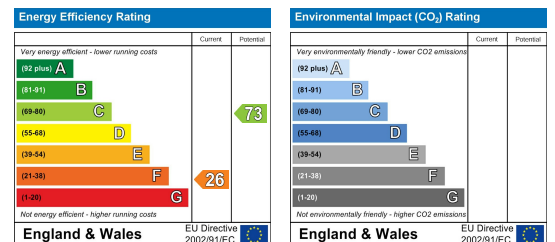


**Floor Plans**



Made with Metropix ©2026

**Energy Efficiency Graph**



These particulars, whilst believed to be accurate are set out as a general outline only for guidance and do not constitute any part of an offer or contract. Intending purchasers should not rely on them as statements of representation of fact, but must satisfy themselves by inspection or otherwise as to their accuracy. No person in this firm's employment has the authority to make or give any representation or warranty in respect of the property.