



Santiago Court, Stepney Green, E1

Guide Price £300,000



Flat 6

Santiago Court, London

Guide Price - £300,000 to £325,000 This beautifully presented one-bedroom apartment is situated on the second floor of a well-maintained development, offering a perfect blend of style, comfort, and convenience. Thoughtfully designed throughout, the property boasts a bright and airy living space, enhanced by large windows that invite an abundance of natural light.

- Close To Amenities
- Bike Storage
- Lift Access
- Communal Gardens
- One Bed Apartment
- Private East Facing Balcony



Santiago Court, Stepney Green, E1

London

Guide Price - £300,000 to £325,000 This beautifully presented one-bedroom apartment is situated on the second floor of a well-maintained development, offering a perfect blend of style, comfort, and convenience. Thoughtfully designed throughout, the property boasts a bright and airy living space, enhanced by large windows that invite an abundance of natural light.

- Close To Amenities
- Bike Storage
- Lift Access
- Communal Gardens
- One Bed Apartment
- Private East Facing Balcony



The reception room provides a welcoming and versatile area for both relaxing and entertaining, seamlessly connecting to a modern, well-appointed kitchen fitted with sleek cabinetry and integrated appliances. The generously sized double bedroom offers a peaceful and comfortable retreat, complemented by a contemporary bathroom finished to a high standard.

A standout feature of the property is the private east-facing balcony—an ideal spot to enjoy morning coffee or unwind while overlooking the surrounding area.

Perfectly positioned, the apartment is just a short walk from excellent transport links, making commuting into the City and beyond both quick and convenient. The property is also ideally located between two attractive green spaces, offering the best of urban living with easy access to nature.

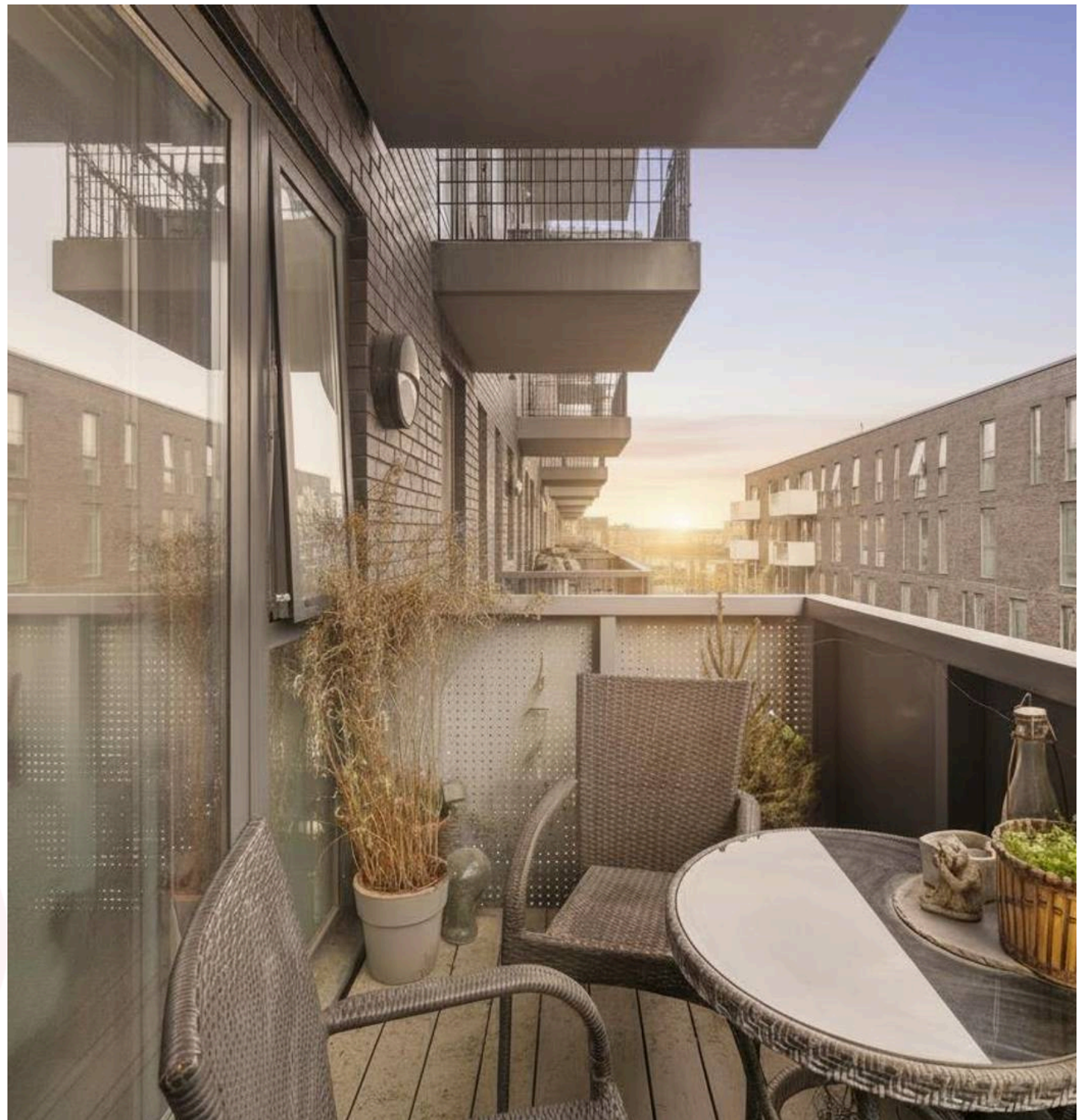
This is an excellent opportunity for first-time buyers or investors seeking a stylish home in a vibrant and well-connected East London location.

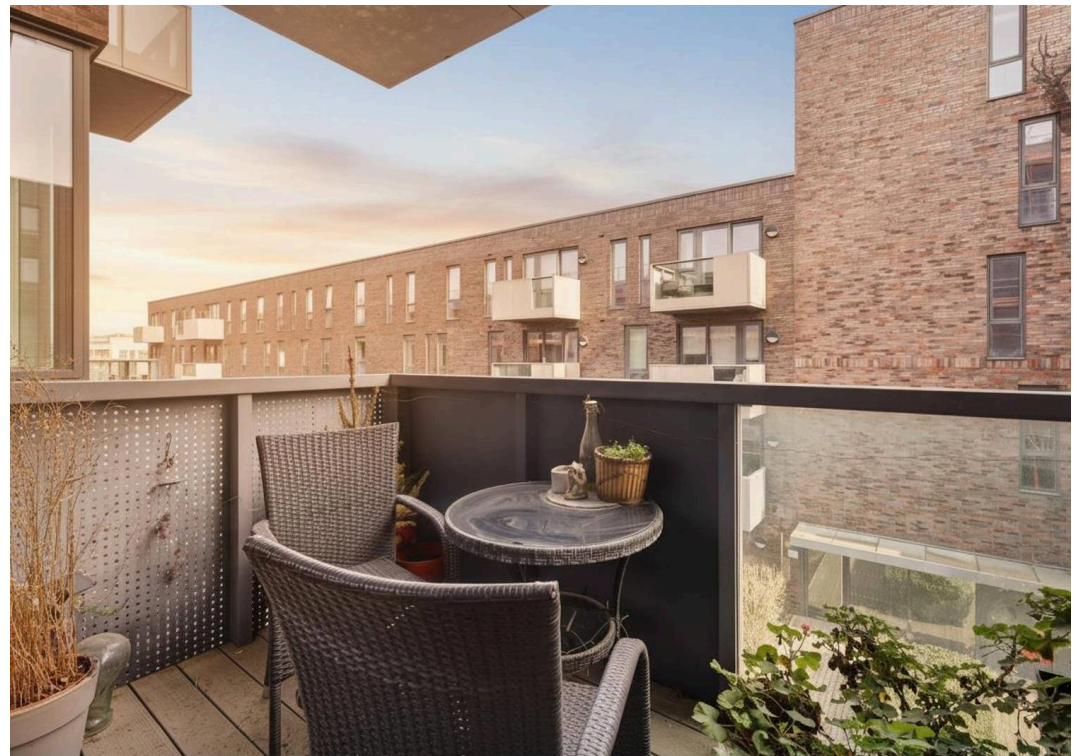
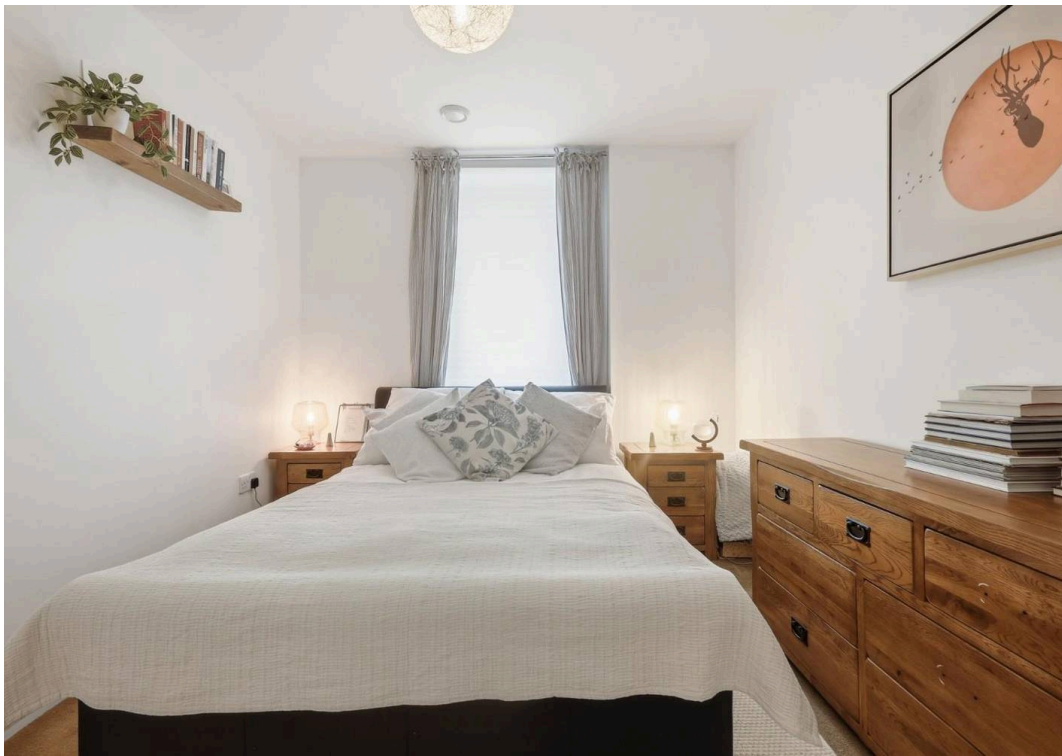
Council Tax band: C

Tenure: Leasehold

EPC Energy Efficiency Rating: B

EPC Environmental Impact Rating: B







Santiago Court

Approx. Gross Internal Area 43.1 sq. metres 463.5 sq. feet)



Measurements are approximate and for illustration purposes only. While we do not doubt the accuracy and completeness, we advise you conduct a careful independent assessment of the property to determine monetary value

FROM EAST LONDON ENERGY TO WEST ESSEX EASE

We Make Moving Home Easy.

At Butler and Stag, we do more than just connect London to West Essex – we make the move seamless. With offices spanning from vibrant East London to the tranquillity of West Essex, we understand the nuances of each area and the journey people take between them. Our marketing goes beyond standard listings, showcasing every property with precision, creativity, and reach that others simply can't match. Coupled with an unparalleled attention to detail, from first enquiry to final move-in, we ensure every client and customer feels informed, supported, and confident. Simply put, we do the little things that make a big difference, setting us apart in every step of the property experience.



LONDON STRATFORD SOUTH WOODFORD BUCKHURST HILL LOUGHTON EPPING BEYOND

Like what you see? Let's talk

Book your **FREE** valuation now



020 8102 1236

london@butlerandstag.com

508 Roman Road, Bow, London, E3 5LU

butlerandstag.uk

IMPORTANT NOTICE - These particulars have been prepared in good faith and they are not intended to constitute part of an offer or contract. We have not performed a structural survey on this property and the services, appliances and specific fittings have not been tested. All photographs, measurements, floor plans and distances referred to are given as a guide and should not be relied upon.

BUTLER & STAG

