



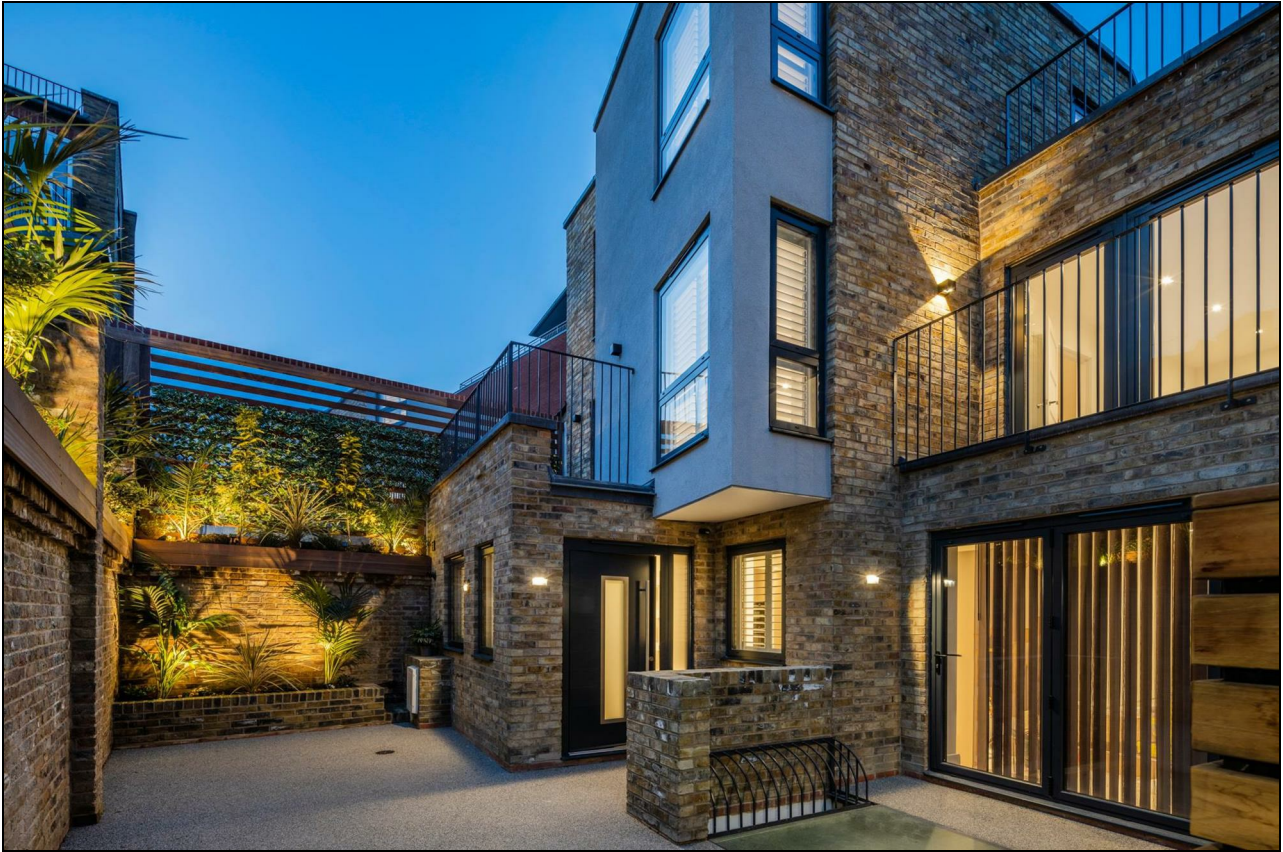
TK International
020 7794 8700
www.t-k.co.uk

Residential Sales
Residential Lettings
Property Management

Sales Office:
9 Heath Street
Hampstead
London NW3 6TP
E: sales@t-k.co.uk

Lettings Office:
16-18 Heath Street
Hampstead
London NW3 6TE
E: lettings@t-k.co.uk

tk.international
 TK International
 TK International



Pattison Road Hampstead NW2

Forming one of a terrace of three recently built, strikingly contemporary houses, discretely located within a gated mews off Pattison Road on the lower western slopes of Hampstead, is this bright four storey three/four bedroom, end of terrace family home which is has been built and finished to an exacting standard.

This house offers 2,119 sq ft of internal accommodation arranged over four floors. The lower ground offers a 20'x15' master suite including sitting area, walk in wardrobe and en-suite bathroom, plus a separate plant room. The ground floor provides a large open-plan kitchen/dining family room with doors onto a south facing secluded private patio garden. This floor also offers a cloaks cupboard and guest WC.

The first floor has a double bedroom, separate family bathroom and sitting room, and the top floor provides a further large guest bedroom with en-suite bathroom, plus an informal roof terrace. There are also two sun-trap balconies located at first floor level.

Each house has a dedicated parking space and there is a bin store area. All the public transport amenities, convenience shopping and cafes of the Finchley Road are located 100 meters around the corner.

£6,750 PCM

SOLE AGENT





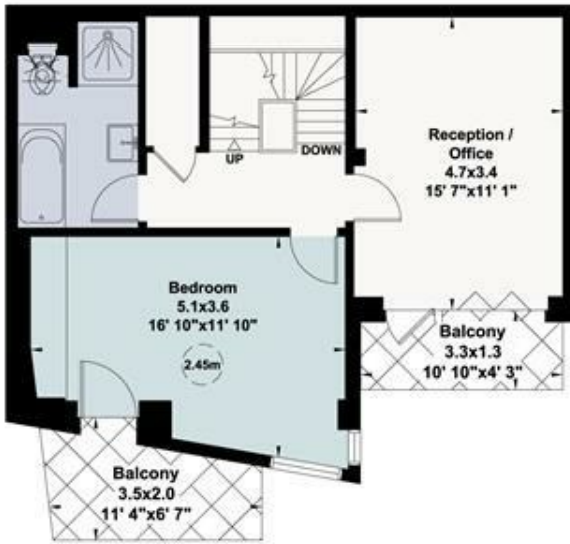


Coachworks Mews, NW2

Gross internal area (approx.)
 197 Sq m (2119 Sq ft) Including Under Eaves
 193 Sq m (2078 Sq ft) Excluding Under Eaves
 Outside space (approx.)
 47 Sq m (509 Sq ft)

For identification only, Not to Scale

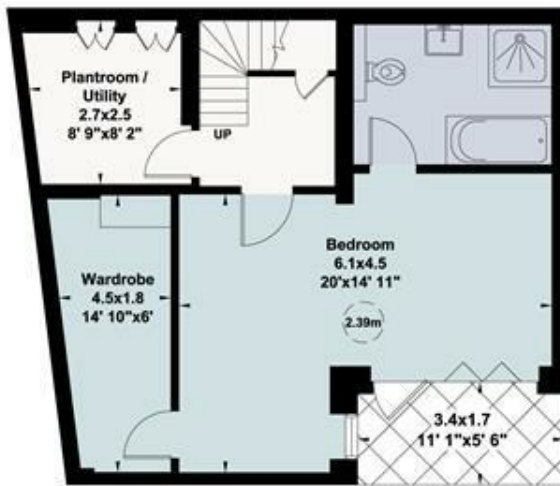
capital 020 8671 7722



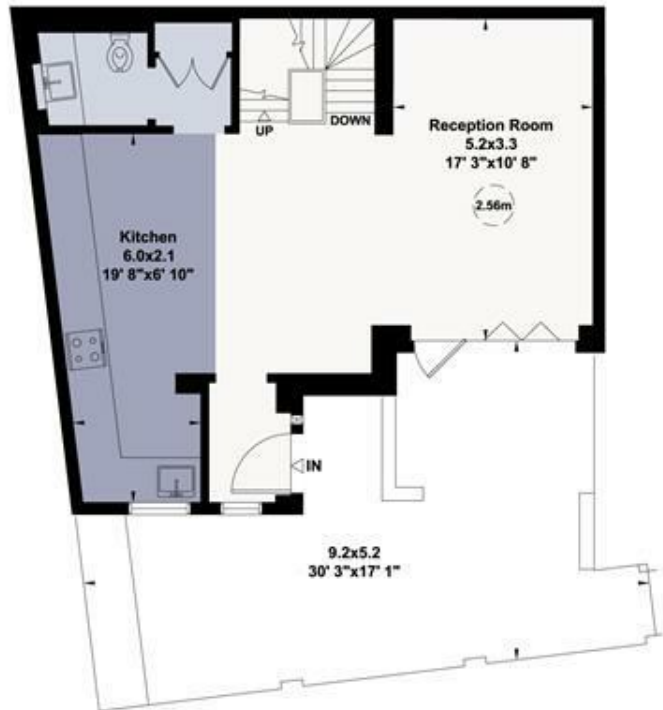
First Floor



Second Floor



Lower Ground Floor



Ground Floor

Not to scale, for guidance only and must not be relied upon as a statement of fact. All measurements and areas are approximate only (and have been prepared in accordance with the current edition of the RICS Code of Measuring Practice).