



OAKFIELD



Saunders Close, Uckfield, TN22 2BX

Price Guide £575,000



Saunders Close, Uckfield, TN22 2BX

An attractive, gable-fronted and imposing family home, ideally positioned within the highly sought-after West Park — a perfect setting for families, just moments from the nature reserve and West Park Recreation Field.

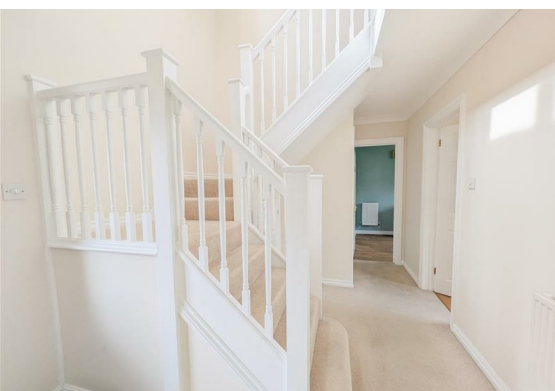
This impressive property offers beautifully balanced accommodation across two floors, complemented by a private and secluded rear garden. From the moment you arrive, the home's kerb appeal is undeniable, with a generous driveway leading to a substantial double garage.

Step inside to a welcoming and spacious entrance hall that immediately sets the tone. The bright and airy dual-aspect lounge features a striking open fireplace — an ideal space to unwind. A formal dining room provides the perfect setting for entertaining family and friends, while the generous kitchen/breakfast room is well-equipped for everyday living and special occasions alike, with access to a useful utility room.

Upstairs, there are four well-proportioned bedrooms. The principal suite benefits from its own en suite bathroom and dressing area, while bedroom two also enjoys en suite facilities. A modern family bathroom serves the remaining bedrooms.

Outside, the rear garden offers a private haven — perfect for summer barbecues and outdoor entertaining, with plenty of space for children to play. The garden also provides access to the large garage (measuring approximately 20'7" x 17'10").





Living Room

22'9" x 11'5" (6.93m x 3.48m)

Dining Room

11'3" x 9'5" (3.43m x 2.87m)

Kitchen

12'7" x 9'10" (3.84m x 3.00m)

Utility Room

W/C

Bedroom One

18'8" x 9'1" (max) (5.69m x 2.77m (max))

Bedroom Two

13'7" x 9'8" (4.14m x 2.95m)

Bedroom Three

12'9" x 8'11" (3.89m x 2.72m)

Bedroom Four

9'0" x 5'10" (2.74m x 1.78m)

Bathroom

8'11" x 5'2" (2.72m x 1.57m)

Ensuite

Shower Room

Double Garage

20'7" x 17'10" (6.27m x 5.44m)

Council Tax Band F - £3,882.51 Per Annum

Floor Plan

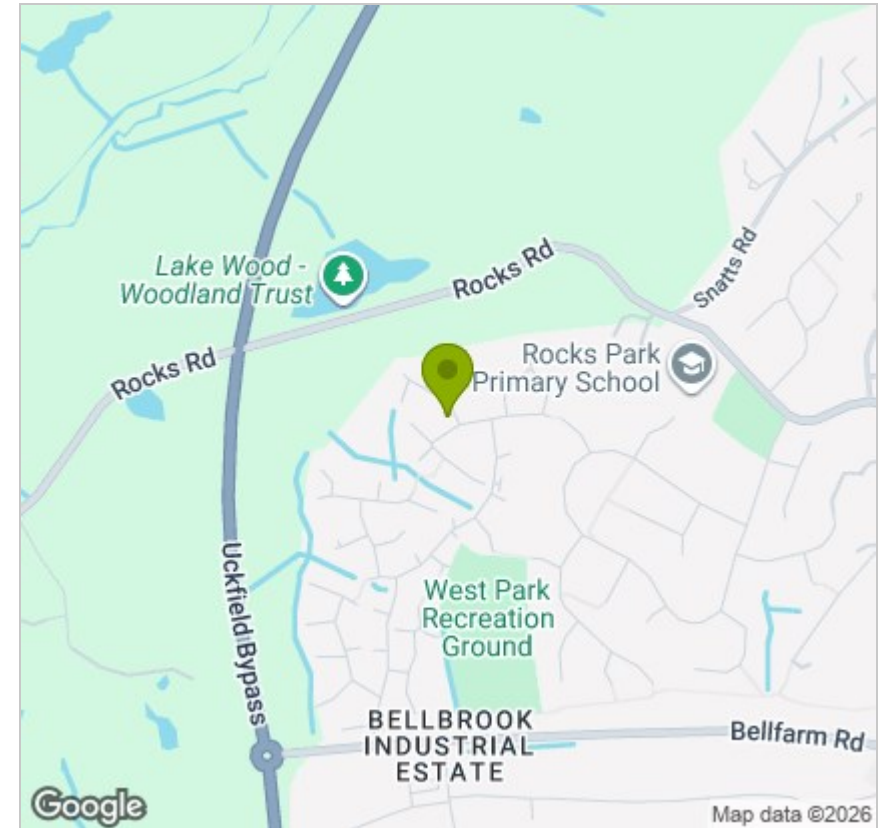


Viewing

Please contact us on 01825 762132 if you wish to arrange a viewing appointment for this property or require further information.

These particulars, whilst believed to be accurate are set out as a general outline only for guidance and do not constitute any part of an offer or contract. Intending purchasers should not rely on them as statements of representation of fact, but must satisfy themselves by inspection or otherwise as to their accuracy. No person in this firm's employment has the authority to make or give any representation or warranty in respect of the property.

Area Map



Energy Efficiency Graph

