



Chepstow Close, SW15

£999,950

Dexters



Chepstow Close, SW15

A well-presented and versatile four-bedroom townhouse arranged over three floors, set within a quiet cul-de-sac just off Lytton Grove in the heart of Putney.

The property offers bright and well-proportioned accommodation throughout. On the ground floor there is a modern kitchen/dining room with direct access to a private paved garden, ideal for entertaining, along with a useful home office or fifth bedroom. The first floor features a generous reception room and a large double bedroom, while the second floor provides three further bedrooms and a family bathroom, making the layout ideal for families or those needing flexible space.

Chepstow Close is perfectly positioned for the amenities of Putney, including excellent cafés, restaurants and shops, as well as green open spaces along the River Thames and Putney Heath. Transport links are excellent with easy access to Putney Bridge Underground Station and East Putney Underground Station, as well as mainline services from Putney Railway Station providing quick routes into central London.

Features

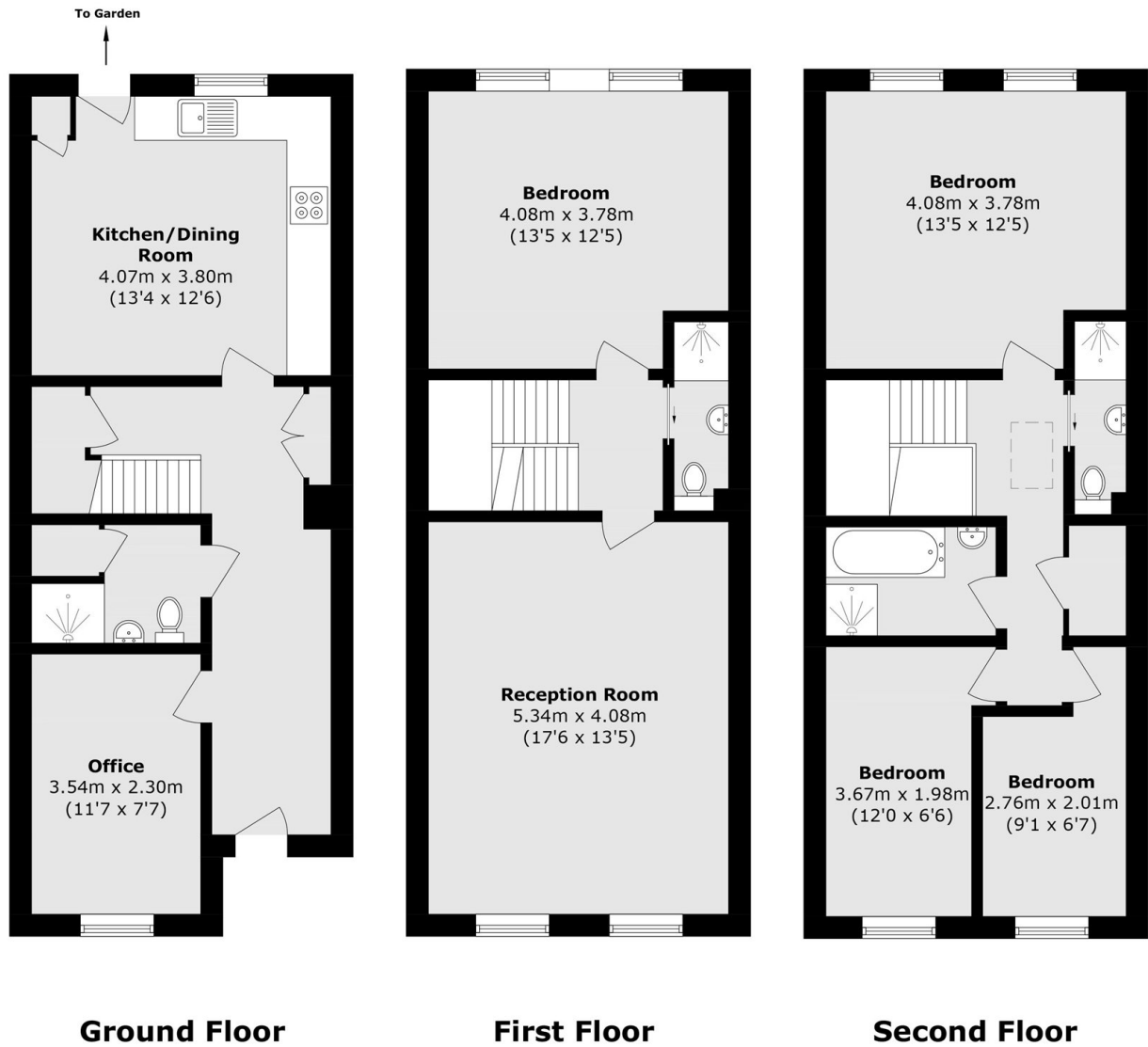
- Five Bedrooms
- Four Bathrooms
- 1452 sq. ft
- Off-street Parking
- Private Garden
- Chain Free







Chepstow Close, London, SW15



Total area (approx.): 134.9 sq. m (1452 sq. ft)