



Little Portland Street, London W1W

Price £4,000 per month - Furnished





Description

A stunning third floor apartment (with lift) in the highly anticipated building of Morley House, developed by the Crown Estate and interior designed by TH2 Designs. The apartment consists of one double bedroom, one bathroom, reception room with open plan kitchen and a utility room.

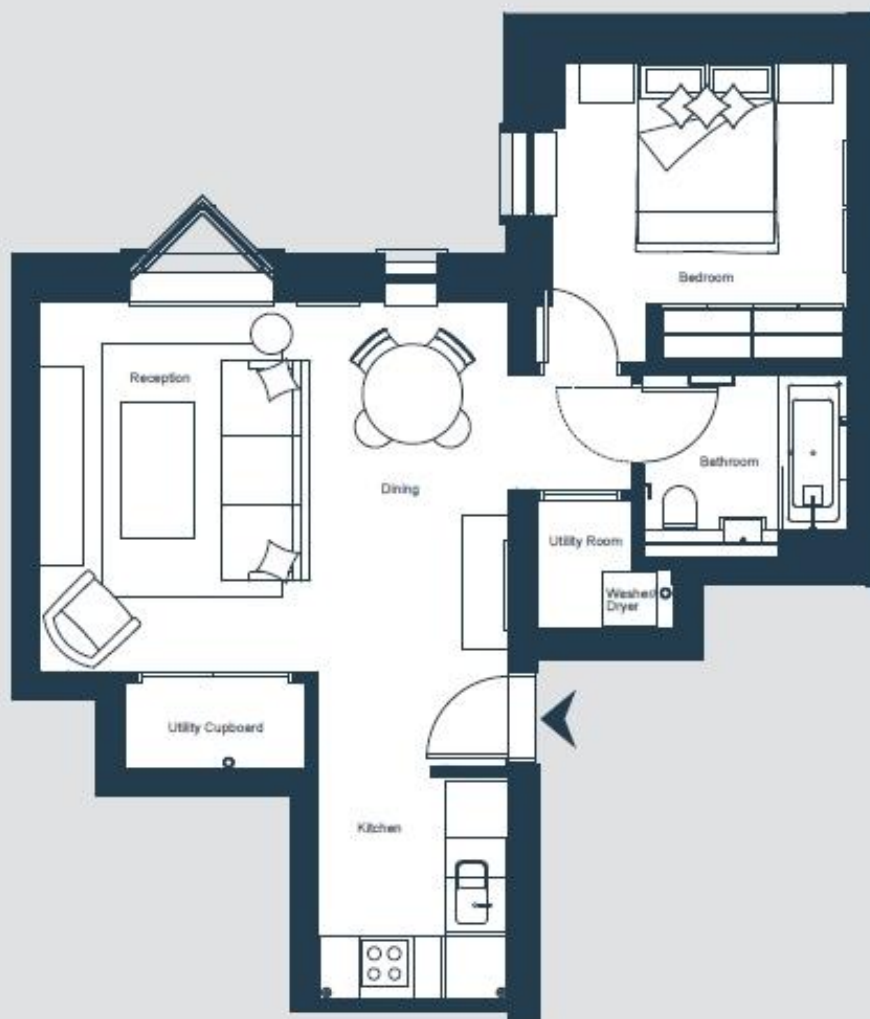
Morley House consists of 44 luxury apartments, complete with access to a cinema room, residents lounge, bicycle storage and 24 hour concierge service and is located in the heart of the West End, perfectly situated for the finest dining and retail experiences London has to offer.

Council tax band: E. Rent is payable on a monthly basis and you may be required to pay more than a month's rent in advance, depending on your circumstances. You will be required to pay a 1 week holding deposit following a successful offer. Tenancies with annual rents up to £50,000 will require a 5 weeks' security deposit, while those exceeding this threshold will require a 6 weeks' deposit. Utility bills, council tax, telephone line and broadband are not included in the rent. As well as paying the rent, you may also be required to make some additional permitted payments. If your tenancy does not qualify as an AST, additional fees may apply. Please visit jll.co.uk/fees for details of fees that may be payable when renting a property. To check broadband and mobile phone coverage please visit Ofcom here ofcom.org.uk/phones-telecoms-and-internet/advice-for-consumers/advice/ofcom-checker

- One double bedroom
 - One bathroom
 - Reception room
 - Open plan kitchen
 - Utility room
 - Third floor
 - Lift
 - Interior designed by TH2 Designs
 - Residents Cinema room
 - Residents Lounge
-

Floorplan

555 sq ft | 52 sq m



Total Area
51.6 Sq m
555.8 Sq ft

Third
Floor



Regent Street

Little Pond Street

Mayfair and Marylebone
St George Street,
London W1S 2FQ
+44 207 399 5550
mayfair@jll.com

Urban living, your way.

jll.co.uk/residential

© 2019 Jones Lang LaSalle IP, Inc. All rights reserved. All information contained herein is from sources deemed reliable; however, no representation or warranty is made to the accuracy thereof.

