



THE STORY OF

The Cove

Thornham, Norfolk

SOWERBYS



THE STORY OF

The Cove

7 Shepherds Pightle, Thornham
Norfolk, PE36 6NA

Detached Coastal Village Home
Three Generous Double Bedrooms
Two En-Suites and Family Bathroom
Two Reception Rooms
Stylish Kitchen Dining Room
Central Peaceful Village Location
Garage and Off Street Parking
South Facing Garden

SOWERBYS BURNHAM MARKET OFFICE
01328 730340
burnham@sowerbys.com





Perfectly positioned within the centre of Shepherds Pightle, The Cove offers the opportunity to embrace the coastal lifestyle from a beautifully appointed home that is as practical and stylish.

From the moment you step through the front door of the home there is an immediate feeling of light and space. The heart of the house is undoubtedly the impressive kitchen/dining room. Beautifully finished with sleek contemporary cabinetry and generous preparation space, it naturally becomes the social hub of the home. Flowing seamlessly from here, the south-facing garden room is flooded with natural light and provides an additional reception area that effortlessly connects the indoors with the private garden beyond.

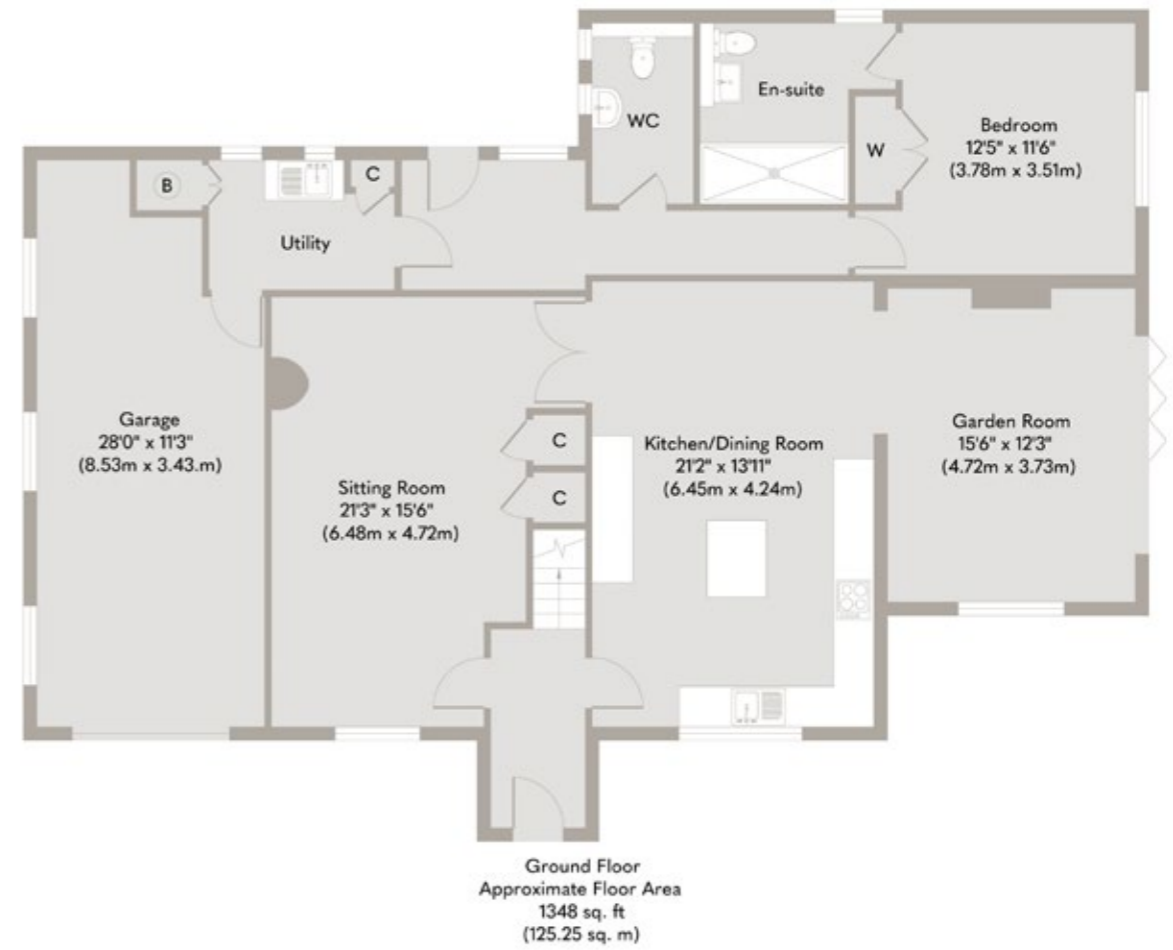
Across the hall, the elegant sitting room offers a wonderfully contrasting atmosphere. Centred around a stylish log-burning stove, it is the perfect retreat during the cooler months, creating a warm and inviting space to curl up with a book or enjoy cosy evenings with family and friends. The ground floor continues with a generous double bedroom complete with its own en-suite shower room, providing excellent flexibility. A separate utility room and guest cloakroom complete the exceptionally well-planned ground floor.

Upstairs there are two further beautifully presented double bedrooms, one enjoying the luxury of its own en-suite shower room, whilst the remaining bedroom is served by an equally well-appointed family bathroom.

Outside, a substantial gravelled driveway provides parking for several vehicles alongside the garage with its electrically operated door. To the rear, bi-fold doors open from the garden room onto an attractive south-facing paved terrace. Wonderfully private and sheltered, this secluded courtyard garden is a true suntrap.

The Cove is exceptionally well designed and occupies an enviable position in one of North Norfolk's most desirable coastal villages - an outstanding opportunity to enjoy the very best of village and coastal living.





Whilst every attempt has been made to ensure the accuracy of the floor plan contained here, measurements of doors, windows, rooms and any other items are approximate and no responsibility is taken for any error, omission, or mis-statement. This plan is for illustrative purposes only and should be used as such by any prospective purchaser or tenant. The services, systems and appliances shown have not been tested and no guarantee as to their operability or efficiency can be given.

Copyright V360 Ltd 2026 | www.houseviz.com

Thornham

A COASTAL BOLTHOLE
WITH MANY FOODIE HOTSPOTS

Thornham may just be the quintessential Norfolk coastal bolthole. With plenty of brick and flint cottages and larger period homes just a short walk from the water's edge and nature reserve, dig a little deeper and you'll also discover it is a fantastic foodie hotspot with a clutch of award winning pubs and eateries, along with a boutique retail park. Once a largely forgotten village on the run between Hunstanton and Burnham Market, over the past decade Thornham has evolved into a chic stop.

Historically a centre of trade and seafaring, the village was used by the Romans and saw fierce conflict between smugglers over the centuries until the harbour silted up in the early 20th century. Many of the traditional fishermen's cottages have been gentrified with a soft palette and contemporary coastal style and life now moves at a calmer pace.

Start the day with a slow brunch at Thornham Deli before picking up some nibbles at the food counter or browsing its quirky lifestyle store. Then, continue your retail therapy a little further along the coast road at Drove Orchards, which seems to have something fresh each season. Or take it easy and fill your basket at the Farm Shop – with a small meat counter, deli, bakery and pantry selection, plus a satellite of Gurneys Fish Shop next door, dinner's sorted. Open Sky Cycles can also be found here, offering bike hire, making this a great base to leave the car and explore.

Drove Orchards is also home to the original, award winning Eric's Fish & Chips and Eric's Pizza, located in a neighbouring Yurt, where traditional dishes have been given a contemporary spin. But if you are looking for good pub grub, head to The Lifeboat Inn or The Orange Tree – both located within this small but prominent village. Whilst some stumble upon Thornham by accident while touring the coastline, there are many who have decided to make it a place to call home.



Note from Sowerbys



“Beautifully presented, thoughtfully designed and ready to enjoy from day one.”



SERVICES CONNECTED

Mains water, electricity and drainage. Oil fired central heating.

COUNCIL TAX

Band E.

ENERGY EFFICIENCY RATING

E. Ref:- 9978-1030-7285-3171-5934.

To retrieve the Energy Performance Certificate for this property please visit <https://find-energy-certificate.digital.communities.gov.uk/find-a-certificate/search-by-reference-number> and enter in the reference number above. Alternatively, the full certificate can be obtained through Sowerbys.

TENURE

Freehold.

LOCATION

What3words: ///when.tightest.ounce

These particulars and measurements whilst believed to be accurate, are set out as a general outline only for guidance and do not constitute any part of an offer or contract. Intending purchasers should not rely on them as statements of representation of fact, but must satisfy themselves by inspection or otherwise as to their accuracy. No person in this firm's employment has the authority to make or give representation or warranty in respect of the property.

SOWERBYS

Sowerbys Estate Agents Limited is a company registered
in England and Wales, company no: 05668606.
Registered office 23 Tuesday Market Place, King's Lynn, England, PE30 1JJ

