



Lady Somerset Road, NW5

£2,750 Per calendar month

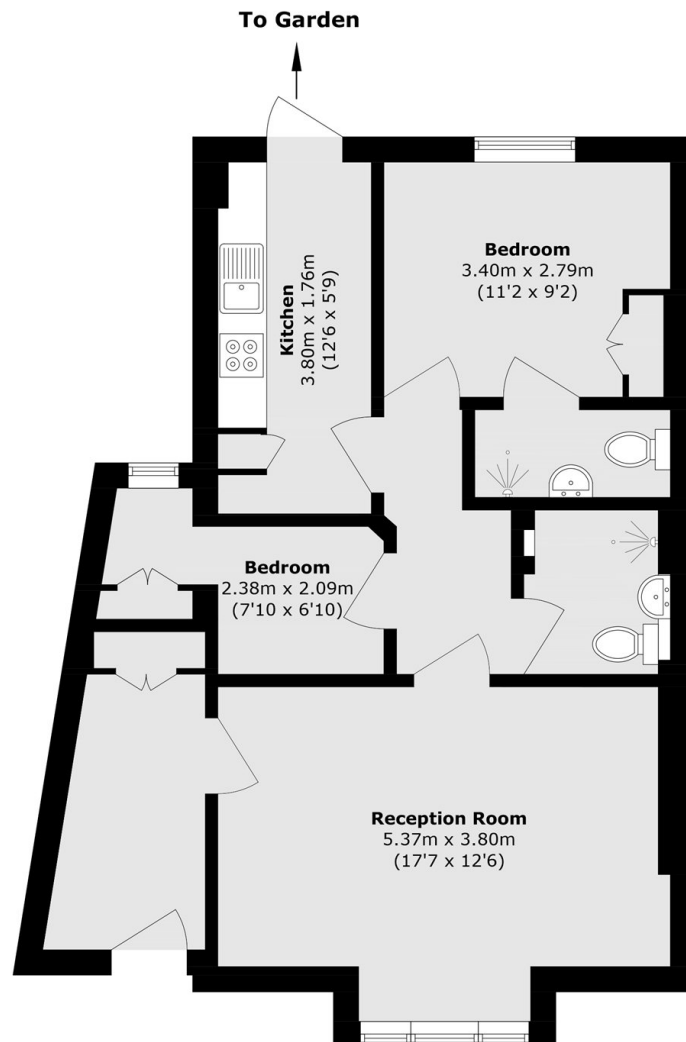
A well-presented two bedroom apartment in a Victorian house with its own private entrance. The property features a charming reception room, a separate kitchen, two bathrooms (one en suite) and a communal garden.

Lady Somerset Road is the half way point between Hampstead Heath and the buzz of both Kentish Town and Fortess Road. This property is a short walk from the Northern line, Overground and Thameslink.

Features

- Two Bedrooms
- Communal Garden
- Private Entrance
- Victorian Conversion
- Great Transport Links
- Chain Free

Lady Somerset Road,
London, NW5



Total area (approx.): 61.5 sq. m (661.9 sq. ft)