



Guide Price
£550,000

Freehold

4x  1x  2x 

**Birch Crescent,
Holtwood, Aylesford,
Kent, ME20**

Wards
Helping you move forwards



Main features

- Wonderful quiet location set in a pretty woodland style setting
- All bedrooms are a great size with fitted wardrobes or cupboards
- Good size plot with a secluded rear garden with tree view to enjoy
- Excellent scope to improve to your own requirements & style
- Great transport links by road & rail

Accommodation

GROUND FLOOR

Entrance Porch
Hallway
Cloakroom
Lounge: 17'10 x 12'4 (5.44m x 3.76m)
Dining Room: 10'8 x 8'11 (3.25m x 2.72m)
Lobby
Kitchen: 11'1 x 10'6 (3.38m x 3.20m)

FIRST FLOOR

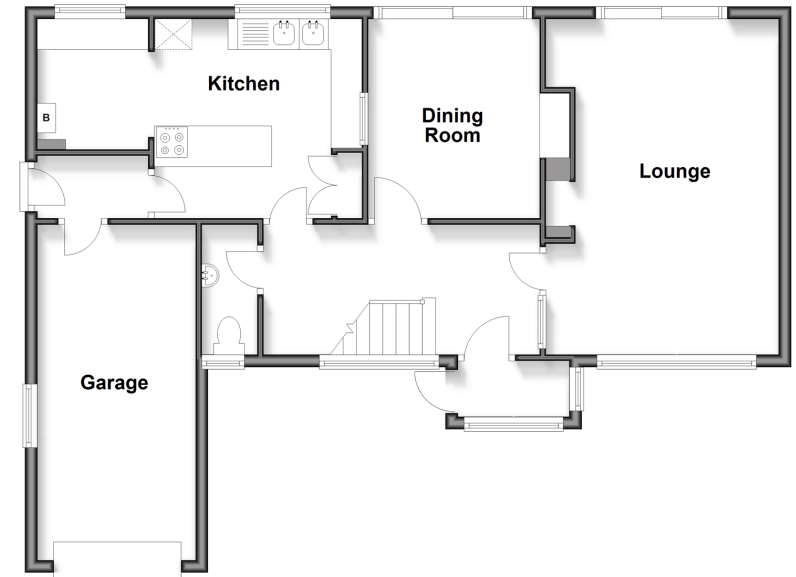
Landing
Bedroom 1: 15'3 up to fitted wardrobes x 10'7 (4.65m x 3.23m)
Bedroom 2: 11'8 x 10'5 up to fitted wardrobes (3.56m x 3.18m)
Bedroom 3: 10'5 (3.18m) x 10'2 up to fitted wardrobes (3.10m) narrowing to 8'4 (2.54m)
Bedroom 4: 12'1 x 6'10 (3.69m x 2.08m)
Bathroom

OUTSIDE

Front & Rear Gardens
Driveway
Garage: 17'10 x 8'8 (5.44m x 2.64m)

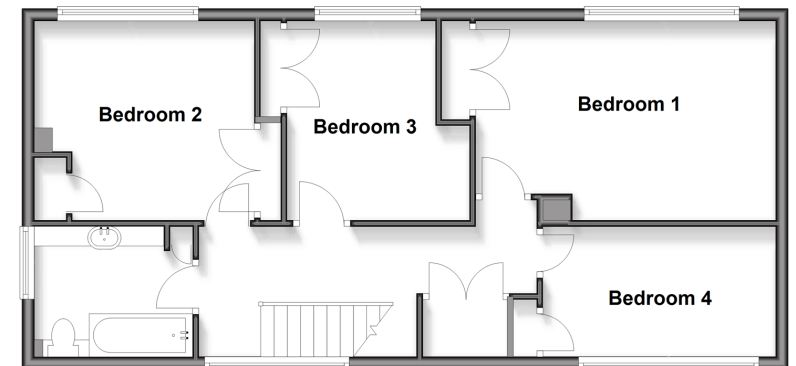
Ground Floor

Approx. 76.2 sq. metres (819.7 sq. feet)



First Floor

Approx. 65.7 sq. metres (706.7 sq. feet)



12934178/20260402/CK/RT

Call Larkfield - 01732 847877 ■ wardsof Kent.co.uk