



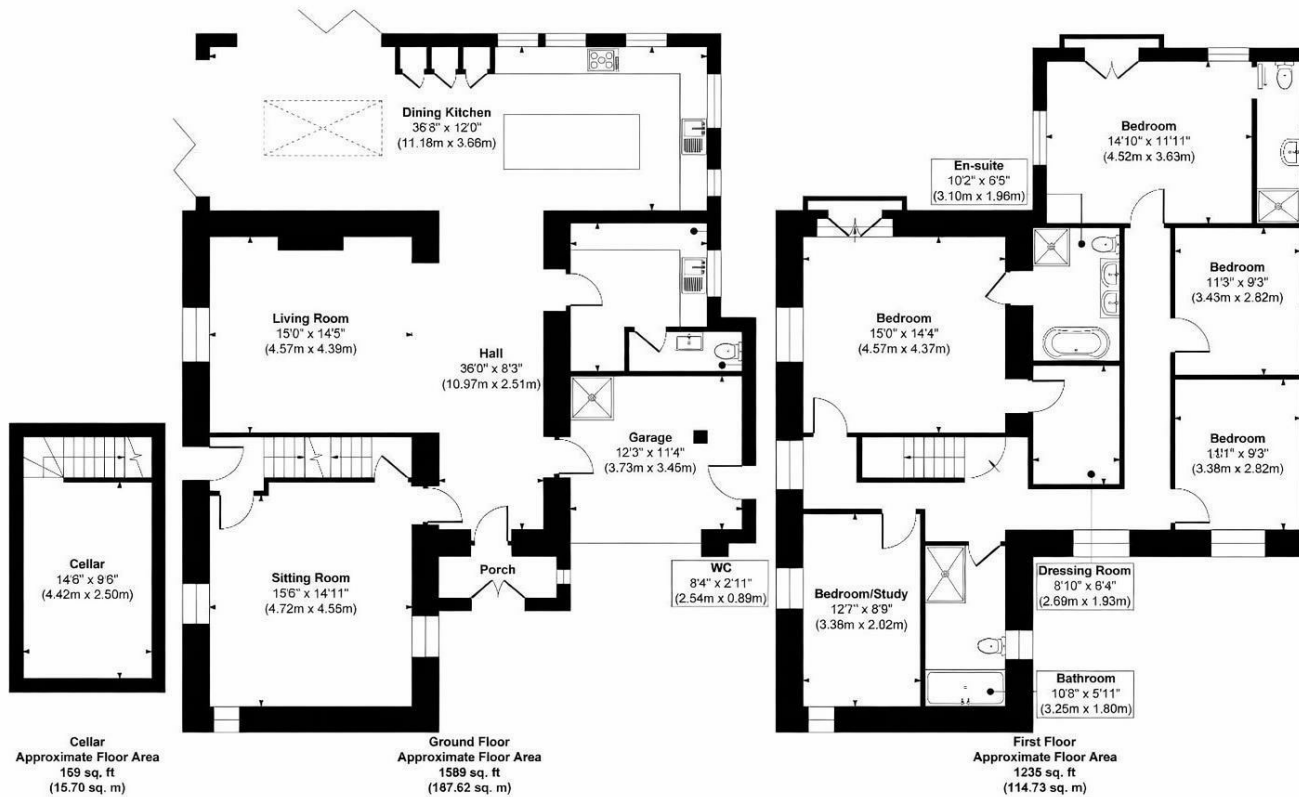
107 WEST END LANE, HORSFORTH
LEEDS, LS18 5ES

£1,250,000
FREEHOLD

Green Meadow Cottage is a truly spectacular five-bedroom residence, located in one of the most prestigious postcodes in North Leeds — the highly sought-after area of Horsforth. Boasting a high specification throughout, this exceptional home offers the very best in elegance, style, and contemporary living, making it a rare opportunity to own a standout property in a prime location.

MONROE

SELLERS OF THE FINEST HOMES



Approx. Gross Internal Floor Area 2993 sq. ft / 278.05 sq. m

Illustration for identification purposes only, measurements are approximate, not to scale.

Copyright © Show Home.



Energy Efficiency Rating		Current	Potential
Very energy efficient - lower running costs			
(92 plus) A			
(81-91) B			
(69-80) C			79
(55-68) D		60	
(39-54) E			
(21-38) F			
(1-20) G			
Not energy efficient - higher running costs			
England & Wales		EU Directive 2002/91/EC	

Agents Note: Whilst every care has been taken to prepare these particulars, they are for guidance purposes only. All measurements are approximate and are for general guidance purposes only and whilst every care has been taken to ensure their accuracy, they should not be relied upon and potential buyers/tenants are advised to recheck the measurements

Guiseley Sales
3a Oxford Road
Guiseley
Leeds
LS20 9AS

james@monroestateagents.com

MONROE

SELLERS OF THE FINEST HOMES