

# Frank Harris & Co.



## Shoreditch Park, N1

£923 Per week

A well-proportioned, modern two bedroom apartment, with a balcony directly overlooking the canal. Situated in a prime spot within the development, the flat is calm and peaceful, with lots of light and a very private feel. Internal features include; wood floors, underfloor heating and a large open-plan reception room. The development offers good security with a 24 hour concierge. Shoreditch Park is across the road and there is a gym (not included in rent) in the building.

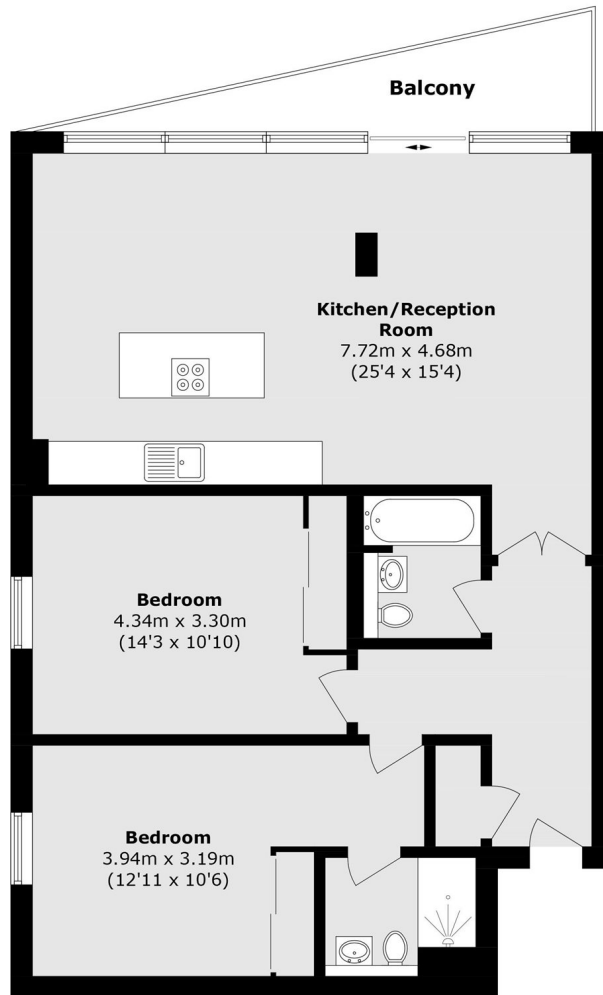


Gainsborough Studios is located at the junction of Poole Street and New North Road, which has a variety of bus routes providing 24 hour access to the City (Moorgate/Liverpool St/London Bridge), Highbury, Islington, Dalston, Stoke Newington and the West End. Nearest stations are Angel, Old Street, Essex Road, Haggerston and Hoxton.

- Two Bedrooms • Two Bathrooms • Large Terrace •
- Canal Views • Unfurnished • 24 Hour Concierge •



# Frank Harris & Co.



## Second Floor

Total area (approx.): 84.9 sq. m (913.8 sq. ft)  
Balcony area (approx.): 6.4 sq. m (68.8 sq. ft)

Frank Harris & Co. Barbican and City  
87 Long Lane, London,  
EC1A 9ET  
020 7601 1919  
citylettings@frankharris.co.uk

Energy Rating: B. We aim to make our particulars both accurate and reliable. However they are not guaranteed; nor do they form part of an offer or contract. If you require clarification on any points then please contact us, especially if you're traveling some distance to view. Please note that appliances and heating systems have not been tested and therefore no warranties can be given as to their good working order.

